



Epidemiology of COVID-19 in Ireland - 14 day report

Report prepared by HPSC on 22/02/2021

Summary characteristics of confirmed COVID-19 cases notified in Ireland from 08/02/2021 up to midnight 21/02/2021

	Number	Percent
Total number of confirmed cases	11,429	
National incidence of confirmed cases per 100,000 population	240.01	
Number of cases hospitalised*	790	6.91
Number of cases admitted to ICU*	33	0.29
Number of deaths among confirmed cases	35	0.31
Case fatality ratio (CFR, %)	0.31	
National incidence of confirmed deaths per 100,000 population	0.74	
Number of cases** associated with clusters	1,126	9.85
Number of imported cases	11	0.1
Number of cases in healthcare workers	614	5.37
Males	5,681	49.71
Females	5,720	50.05
M:F ratio	0.99	
Median age (years)	33	
Mean age (years)	36	
Age range (years)	0 - 102	

* The number of cases hospitalised and admitted to ICU relate only to events notified in the last 14 days and do not include cases notified prior to this and admitted to hospital or ICU in the last 14 days

**Cases may be associated with outbreaks notified outside the timeframe of this report
08/02/2021 - 21/02/2021

Note: Data were extracted from Computerised Infectious Disease Reporting (CIDR) system at 07:59 on 22/02/2021 and are provisional and subject to ongoing review, validation and update. As a result, figures in this report may differ from previously published figures.

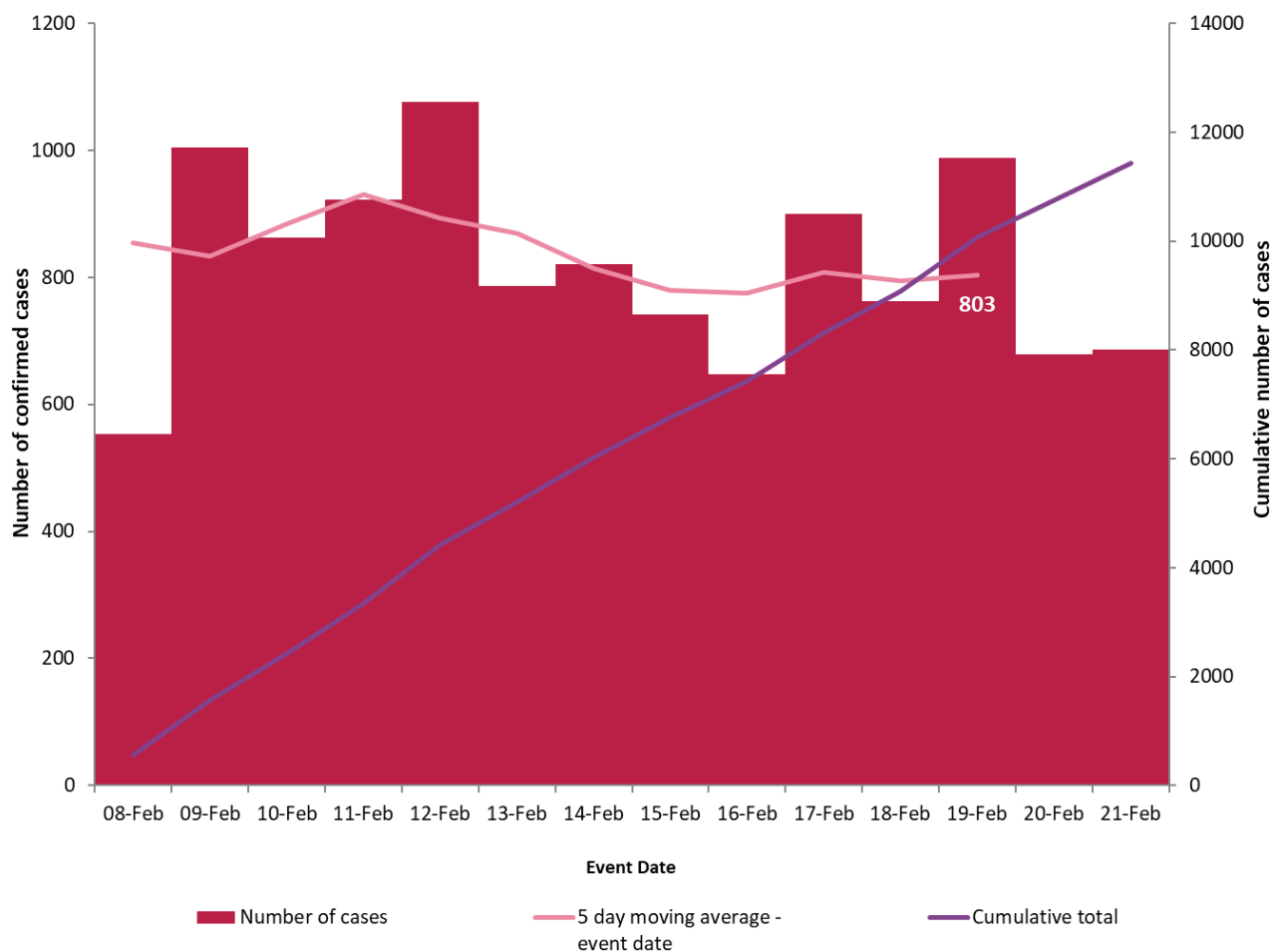


Figure 1. Daily number and cumulative number of confirmed cases of COVID-19, and 5-day moving average, by notification date (n=11,429)

Table 1: Characteristics of confirmed COVID-19 cases notified in Ireland from 08/02/2021 up to midnight on 21/02/202

Characteristic		Number of cases	Percent
Total number of confirmed cases		11,429	100
Sex	Male:Female ratio	0.99	
	Male	5,681	49.71
	Female	5,720	50.05
	Unknown	28	0.24
Age	Median age (years)	33	
	Mean age (years)	36	
	Age range (years)	0 - 102	
	0-4 yrs	618	5.41
	5-12 yrs	898	7.86
	13-18 yrs	868	7.59
	19-24 yrs	1,696	14.84
	25-34 yrs	1,856	16.24
	35-44 yrs	1,777	15.55
	45-54 yrs	1,443	12.63
	55-64 yrs	1,053	9.21
	65-74 yrs	537	4.7
	75-84 yrs	423	3.7
	85+ yrs	259	2.27
	Unknown	1	0.01
Symptom status at time of test*	Yes	6,901	60.38
	No	2,321	20.31
	Unknown	2,207	19.31

*Symptom status is recorded at the time of test and is not updated, therefore a proportion of the asymptomatic cases may subsequently develop symptoms however this will not be captured in the data.

Table 2: Number of confirmed COVID-19 cases by community healthcare organisation (CHO) notified in Ireland from 08/02/2021 to midnight 21/02/2021

CHO Area	Number of confirmed cases	Incidence per 100,000 population
CHO1	769	196.5
CHO2	1,254	276.8
CHO3	799	207.5
CHO4	587	85.0
CHO5	979	191.8
CHO6	923	240.9
CHO7	1,791	253.1
CHO8	1,744	281.6
CHO9	2,581	415.3
Unknown	2	
Total	11,429	240.0

Table 3: Number of confirmed COVID-19 cases by county notified in Ireland from 08/02/2021 to midnight 21/02/2021

County	Number of confirmed cases	Incidence per 100,000 population	5 day moving average of confirmed cases (17/02/2021-21/02/2021)
Offaly	341	437.4	24
Dublin	4,520	335.5	315
Galway	848	328.6	53
Monaghan	200	325.8	12
Laois	249	294.0	17
Louth	369	286.3	25
Waterford	315	271.1	23
Kildare	603	271.0	48
Limerick	519	266.3	45
Mayo	337	258.2	27
Longford	105	256.9	9
Cavan	184	241.5	12
Meath	470	241.0	28
Westmeath	208	234.3	15
Carlow	123	216.0	7
Tipperary	287	179.9	26
Wexford	256	171.0	11
Donegal	262	164.6	24
Leitrim	52	162.3	4
Clare	176	148.1	14
Wicklow	174	122.2	13
Sligo	72	109.9	5
Roscommon	69	106.9	5
Kilkenny	103	103.8	9
Cork	513	94.5	26
Kerry	74	50.1	4
Total	11,429	240.0	803

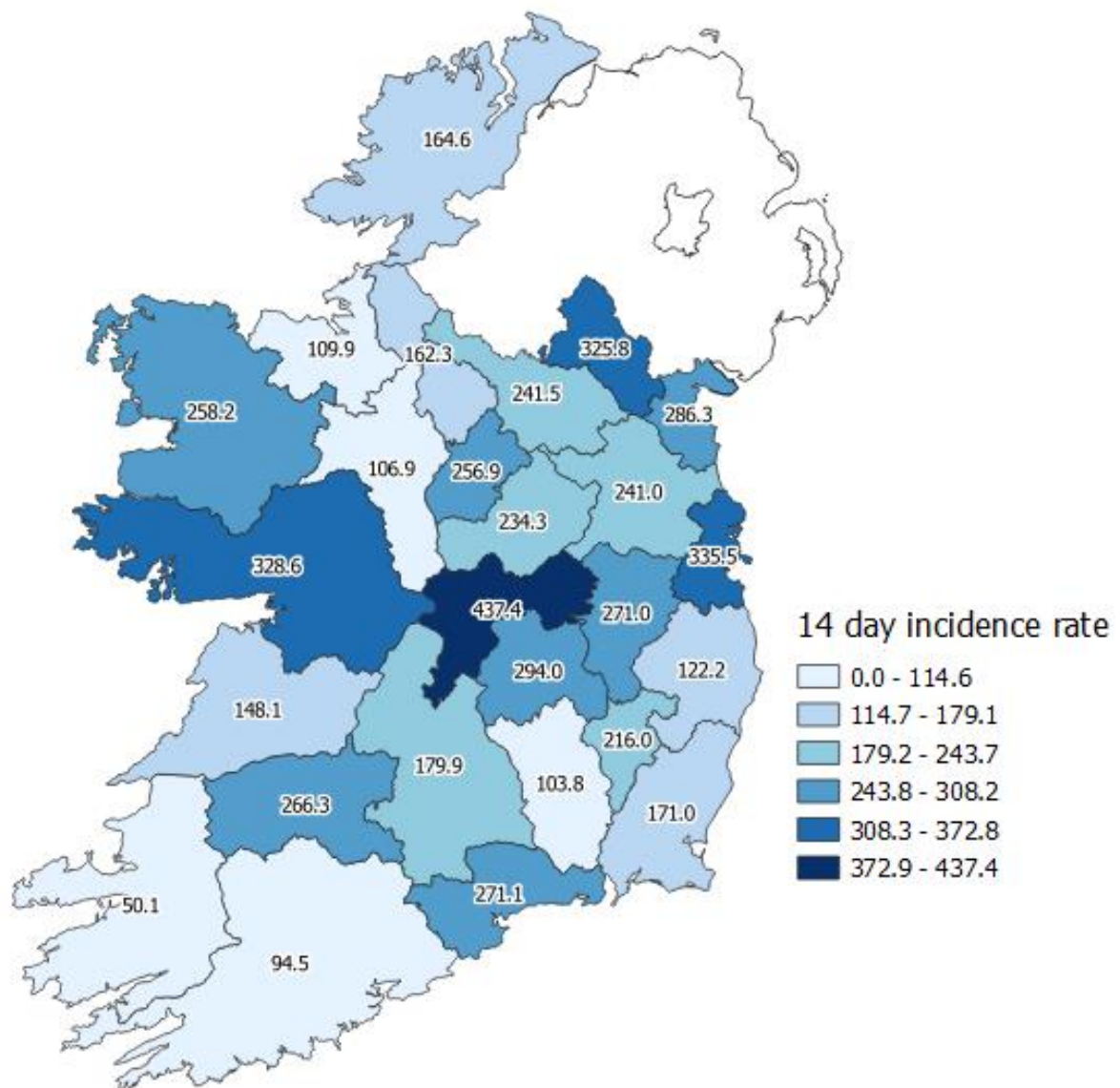


Figure 2: Cumulative 14-day incidence rates of confirmed COVID-19 cases per 100,000 population by county notified in Ireland between 08/02/2021 and 21/02/2021

Please do not directly compare county shades to previous maps. The categories listed will change as the number of cases change, which may result in changes to the map shading.

Table 4: Number and incidence of confirmed COVID-19 cases by Dublin Local Health Offices* (LHOs) notified in Ireland with a notification date between 08/02/2021 and 21/02/2021

CCA	Local Health Office	Number of cases in past 14 days based on notification date	14 day incidence rates based on notification dates
CCA1	Dublin South	187	137.4
CCA2	Dublin South East	568	459.2
CCA3	Dublin South City	233	155.4
CCA4	Dublin South West	390	242.4
CCA5	Dublin West	559	359.8
CCA6	Dublin North West	919	442.5
CCA7	Dublin North Central	1,063	687.7
CCA8	Dublin North	599	231.1
	Unknown	2	
	Dublin	4,520	335.5

Note: Local health offices (LHOs) came into operation on 1st September 2005, replacing Community Care Areas (CCAs). LHO population denominators are used in this report rather than CCA population denominators. The LHO rates were calculated using Census 2016 LHO denominator data extracted from the HSE Health Atlas and are not a direct match to the corresponding CCAs.

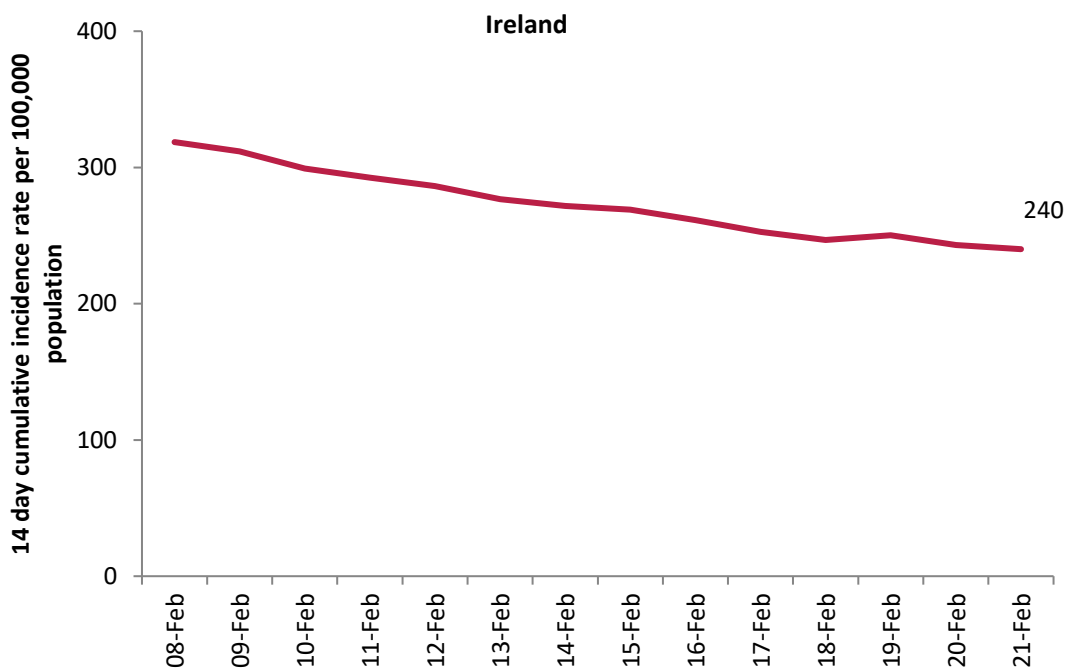


Figure 3: 14 day cumulative incidence rates per 100,000 population of confirmed cases of COVID-19 in Ireland* (08/02/2021 to 21/02/2021)

*14 day incidence rates per 100,000 populations of confirmed cases of COVID-19 for individual counties can be found in appendix 1 of this report

Table 5: Number of confirmed COVID-19 cases by most likely transmission source notified from 08/02/2021 to midnight 21/02/2021

Most likely transmission source	Number of cases	Percent
Travel related*	73	0.64%
Close contact with a known confirmed case	5,982	52.34%
Healthcare setting acquired: patient	461	4.03%
Healthcare setting acquired: staff	266	2.33%
Community transmission	2,061	18.03%
Under investigation	2,586	22.63%
Total	11,429	100.00%

*Travel related cases include cases who acquire COVID-19 infection outside of Ireland (imported cases) and cases who acquire COVID-19 infection directly from imported cases

Table 6: Cumulative number of confirmed cases of COVID-19 notified in Ireland from 08/02/2021 to midnight 21/02/2021 by age group, hospitalisation and ICU admission*

Age Group (years)	Number of cases (n)	Cases hospitalised (n)	Cases hospitalised (%)	Cases admitted to ICU (n)	Cases admitted to ICU (%)
0-4 yrs	618	19	2.41	0	0
5-12 yrs	898	17	2.15	0	0
13-18 yrs	868	19	2.41	0	0
19-24 yrs	1696	43	5.44	<5	
25-34 yrs	1856	66	8.35	<5	
35-44 yrs	1777	75	9.49	<5	
45-54 yrs	1443	90	11.39	9	27.27
55-64 yrs	1053	97	12.28	<5	
65-74 yrs	537	116	14.68	7	21.21
75-84 yrs	423	167	21.14	7	21.21
85+ yrs	259	81	10.25	<5	
Unknown	1			0	0
Total	11,429	790	100	33	100

* The number of cases hospitalised and admitted to ICU relate only to events notified in the last 14 days and do not include cases notified prior to this and admitted to hospital or ICU in the last 14 days

Deaths among COVID-19 cases

Table 7: Summary of deaths in all COVID-19 cases notified in Ireland from 08/02/2021 up to midnight 21/02/2021

	Number	Percent
Total number of deaths	37	
Confirmed	35	94.59
Probable	1	2.70
Possible	1	2.70
Total number of cases hospitalised	22	59.46
Total number of male cases	26	70.27
M:F ratio	2.36	
Median age (years)	78	
Mean age (years)	78	
Age range (years)	42 - 95	

Table 8: Number of deaths in all COVID-19 cases by sex and age group notified in Ireland from 08/02/2021 up to midnight 21/02/2021

Age group (years)	Female	Male	Total	Percent
<65	<5	<5	<5	10.81
65-74 yrs	<5	7	8	21.62
75-84 yrs	5	9	14	37.84
85+ yrs	5	6	11	29.73
Total	11	26	37	100
Percent	29.73	70.27		

Acknowledgements

Sincere thanks are extended to all those who are participating in the collection of data and reporting of data used in these reports. This includes the HSE COVID-19 Contact Management Programme (CMP), staff in ICU units, notifying clinicians, laboratory staff, public health doctors, nurses, surveillance scientists, microbiologists and administrative staff.

Report prepared by COVID-19 Epidemiology Team, HPSC

Technical Notes

1. Data Source

Data are based on statutory notifications and were extracted from Computerised Infectious Disease Reporting (CIDR) system. Data are provisional and subject to ongoing review, validation and update. As a result, figures in this report may differ from previously published figures.

2. Population data

Population data were taken from Census 2016. Data were aggregated into the following age groups for the analysis: 0-4 years, 5-12 years, 13-18 years, 19-24 years, 25-34 years, 35-44 years, 45-54 years, 55-64 years, 65-74 years, 75-84 years and ≥ 85 years.

3. Transmission classification

Transmission classification is based on country of infection as well as enhanced exposure data (international travel; close contact of a case) recorded in CIDR. Transmission is classified as 'unknown' due to incomplete data on CIDR.

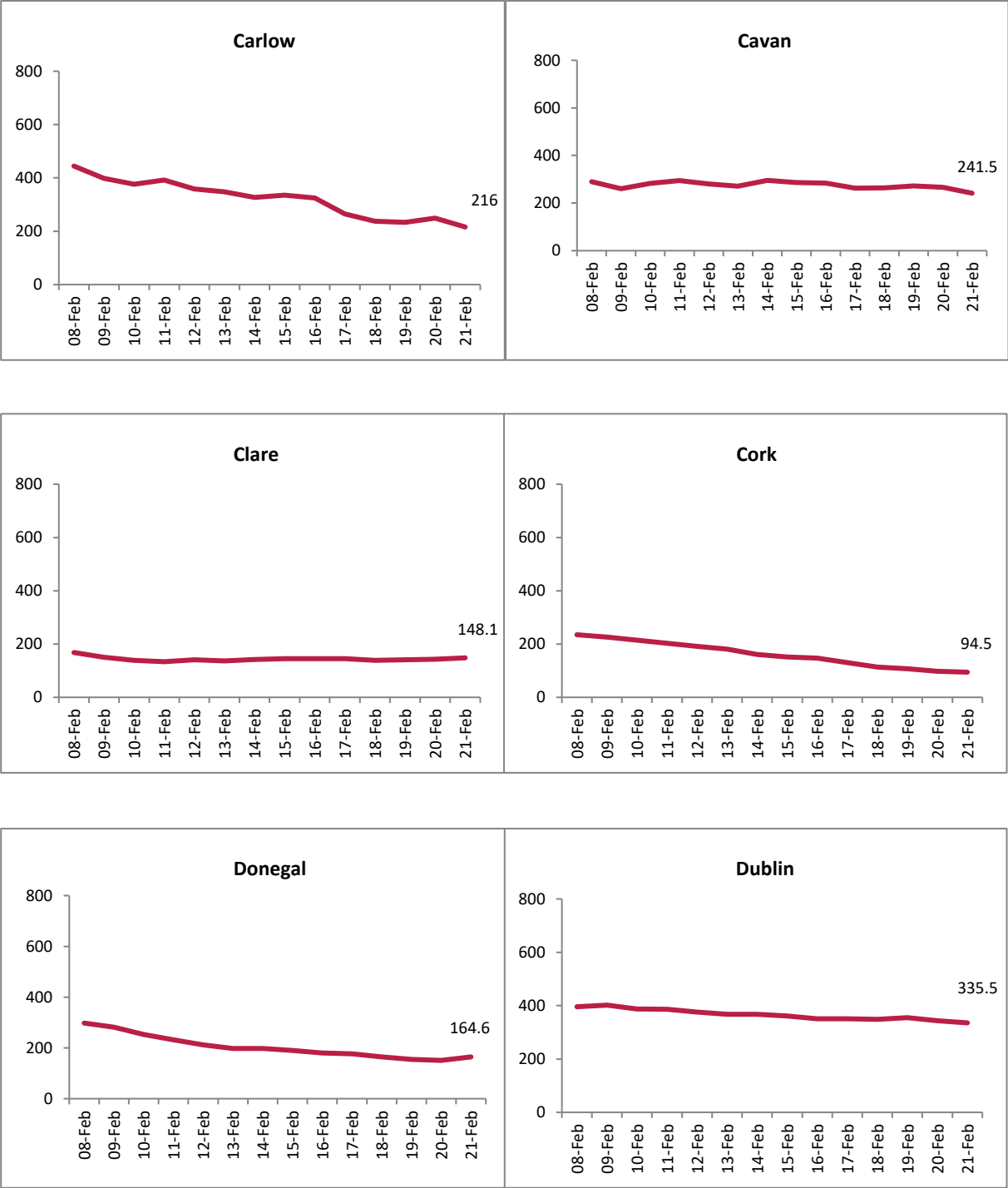
Travel related cases include cases who acquire COVID-19 infection outside of Ireland (imported cases) and cases who acquire COVID-19 infection directly from imported cases.

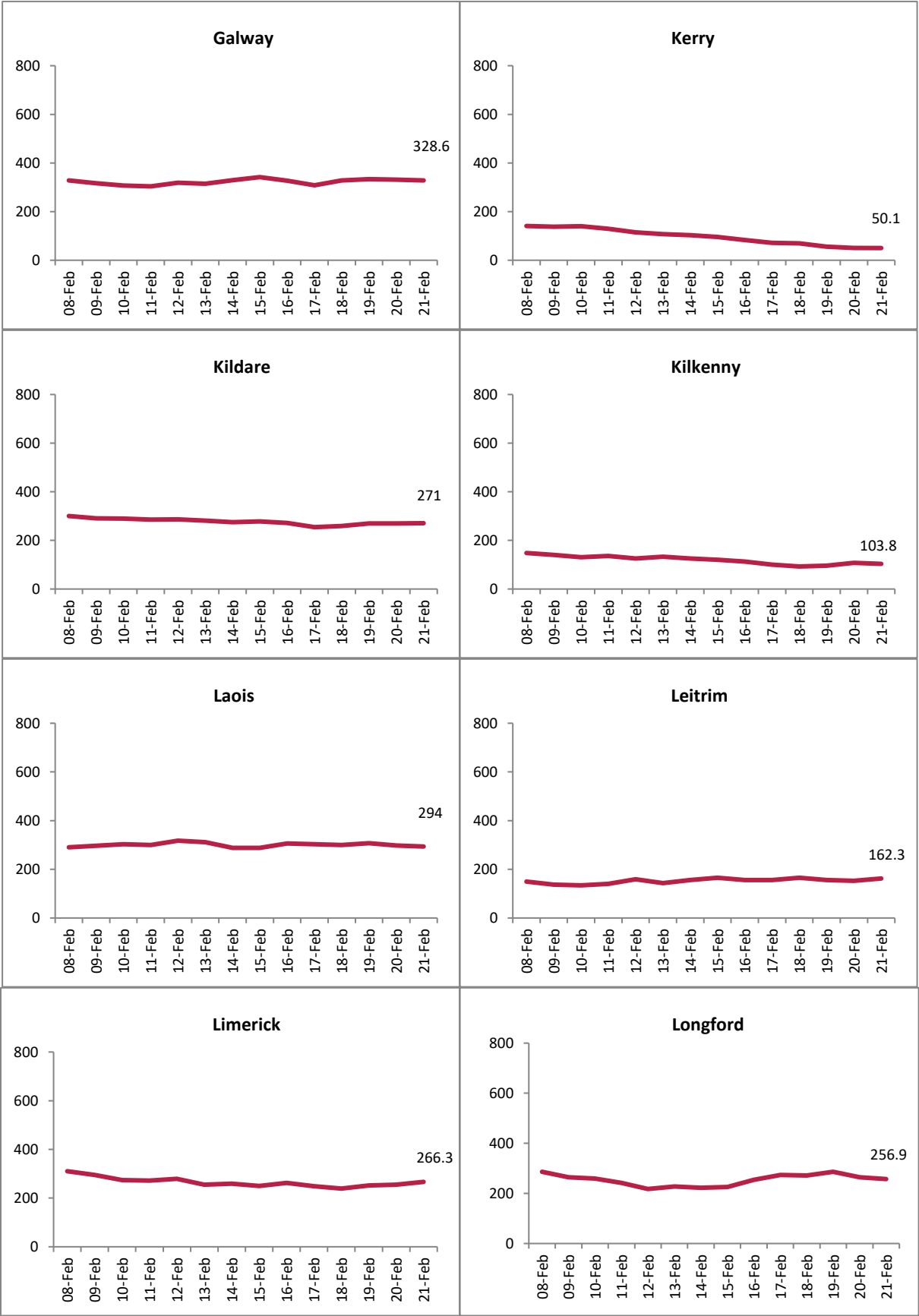
WHO definition of transmission classification is specified below:

- Community transmission is evidenced by the inability to relate confirmed cases through chains of transmission for a large number of cases, or by increasing positive tests through routine screening of sentinel samples.
- Local transmission indicates locations where the source of infection is within the reporting location.
- Imported cases only indicates locations where all cases have been acquired outside the location of reporting.

Appendix 1

Figure A. 14 day cumulative incidence rates per 100,000 population of confirmed cases of COVID-19 by county (08/02/2021 to 21/02/2021)





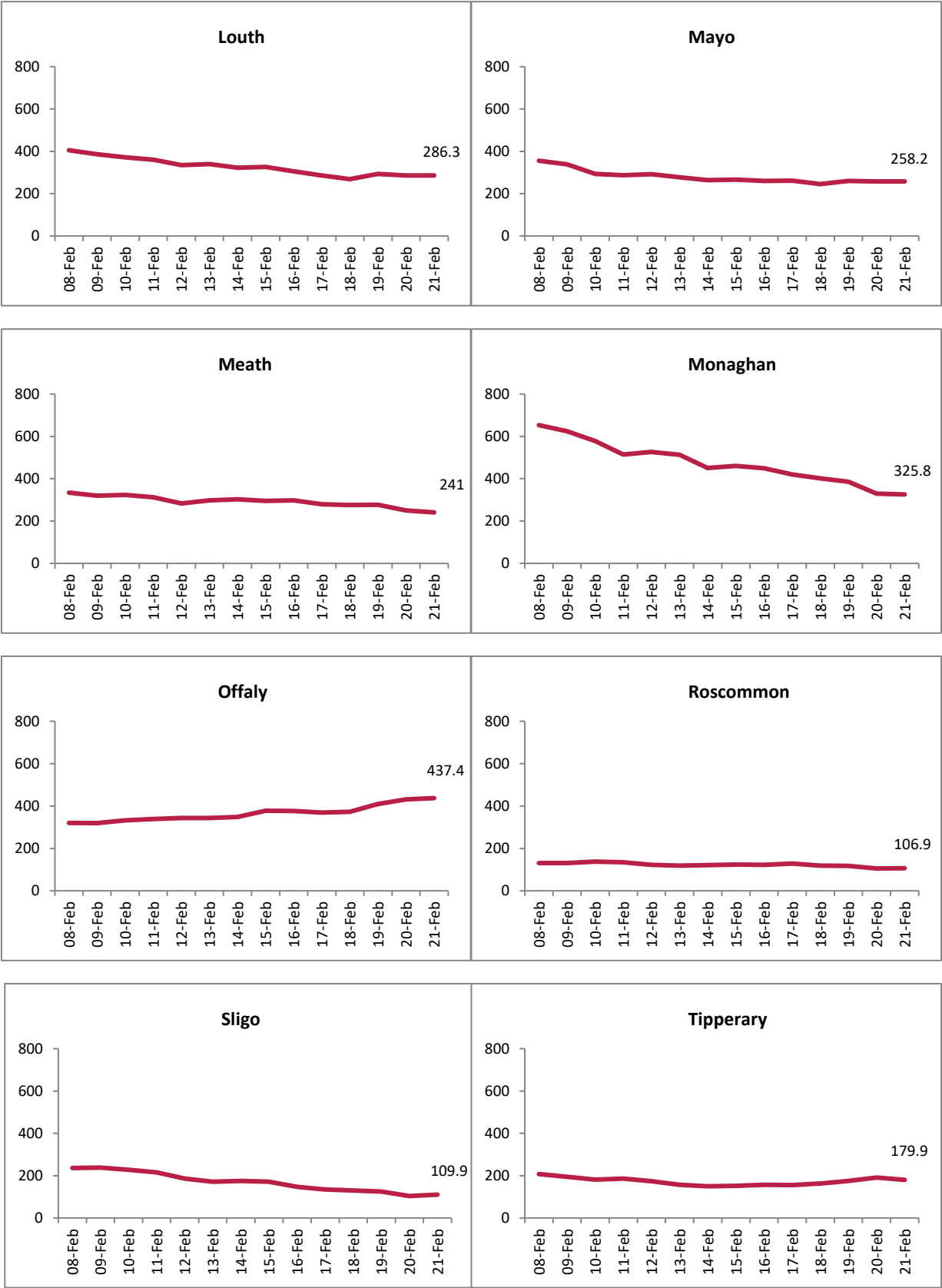




Figure B. 14 day cumulative incidence rates per 100,000 population of confirmed cases of COVID-19 by Dublin CCA (08/02/2021 to 21/02/2021)

