



Epidemiology of COVID-19 in Ireland - 14 day report

Report prepared by HPSC on 17/02/2021

Summary characteristics of confirmed COVID-19 cases notified in Ireland from 03/02/2021 up to midnight 16/02/2021

	Number	Percent
Total number of confirmed cases	12,460	
National incidence of confirmed cases per 100,000 population	261.66	
Number of cases hospitalised*	915	7.34
Number of cases admitted to ICU*	41	0.33
Number of deaths among confirmed cases	46	0.37
Case fatality ratio (CFR, %)	0.37	
National incidence of confirmed deaths per 100,000 population	0.97	
Number of cases** associated with clusters	1,605	12.88
Number of imported cases	4	0.03
Number of cases in healthcare workers	844	6.77
Males	6,117	49.09
Females	6,326	50.77
M:F ratio	0.97	
Median age (years)	35	
Mean age (years)	38	
Age range (years)	0 - 102	

* The number of cases hospitalised and admitted to ICU relate only to events notified in the last 14 days and do not include cases notified prior to this and admitted to hospital or ICU in the last 14 days

**Cases may be associated with outbreaks notified outside the timeframe of this report
03/02/2021 - 16/02/2021

Note: Data were extracted from Computerised Infectious Disease Reporting (CIDR) system at 07:57 on 17/02/2021 and are provisional and subject to ongoing review, validation and update. As a result, figures in this report may differ from previously published figures.

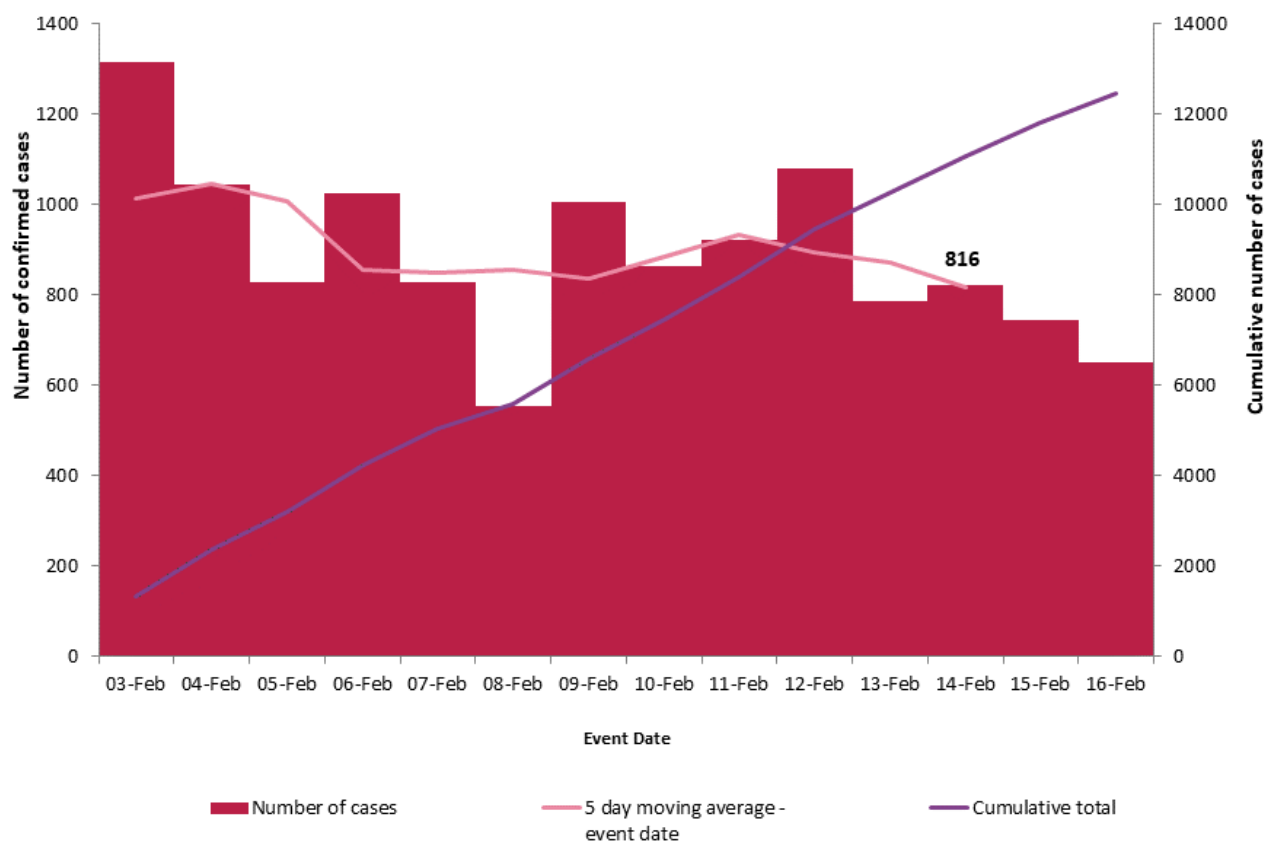


Figure 1. Daily number and cumulative number of confirmed cases of COVID-19, and 5-day moving average, by notification date (n=12,460)

Table 1: Characteristics of confirmed COVID-19 cases notified in Ireland from 03/02/2021 up to midnight on 16/02/2021

Characteristic		Number of cases	Percent
Total number of confirmed cases		12,460	100
Sex	Male:Female ratio	0.97	
	Male	6,117	49.09
	Female	6,326	50.77
	Unknown	17	0.14
Age	Median age (years)	35	
	Mean age (years)	38	
	Age range (years)	0 - 102	
	0-4 yrs	571	4.58
	5-12 yrs	885	7.1
	13-18 yrs	990	7.95
	19-24 yrs	1,635	13.12
	25-34 yrs	2,009	16.12
	35-44 yrs	1,951	15.66
	45-54 yrs	1,724	13.84
	55-64 yrs	1,192	9.57
	65-74 yrs	616	4.94
	75-84 yrs	533	4.28
	85+ yrs	352	2.83
	Unknown	2	0.02
Symptom status at time of test*	Yes	7,624	61.19
	No	2,445	19.62
	Unknown	2,391	19.19

*Symptom status is recorded at the time of test and is not updated, therefore a proportion of the asymptomatic cases may subsequently develop symptoms however this will not be captured in the data.

Table 2: Number of confirmed COVID-19 cases by community healthcare organisation (CHO) notified in Ireland from 03/02/2021 to midnight 16/02/2021

CHO Area	Number of confirmed cases	Incidence per 100,000 population
CHO1	924	236.1
CHO2	1,263	278.7
CHO3	786	204.2
CHO4	924	133.8
CHO5	1,171	229.5
CHO6	997	260.2
CHO7	1,913	270.3
CHO8	1,855	299.5
CHO9	2,627	422.8
Total	12,460	261.7

Table 3: Number of confirmed COVID-19 cases by county notified in Ireland from 03/02/2021 to midnight 16/02/2021

County	Number of confirmed cases	Incidence per 100,000 population	5 day moving average of confirmed cases (12/02/2021-16/02/2021)
Monaghan	276	449.6	16
Offaly	293	375.8	23
Dublin	4,728	350.9	315
Galway	847	328.2	83
Carlow	186	326.7	9
Laois	259	305.8	18
Louth	393	304.9	26
Meath	583	298.9	36
Waterford	340	292.7	21
Cavan	215	282.2	11
Kildare	605	271.9	39
Limerick	522	267.8	35
Mayo	337	258.2	25
Wexford	386	257.8	24
Longford	105	256.9	7
Westmeath	220	247.8	16
Donegal	287	180.3	15
Leitrim	49	152.9	5
Tipperary	243	152.3	18
Sligo	98	149.5	6
Cork	801	147.5	31
Wicklow	204	143.2	11
Clare	169	142.2	14
Roscommon	79	122.4	5
Kilkenny	112	112.9	6
Kerry	123	83.3	2
Total	12,460	261.7	816

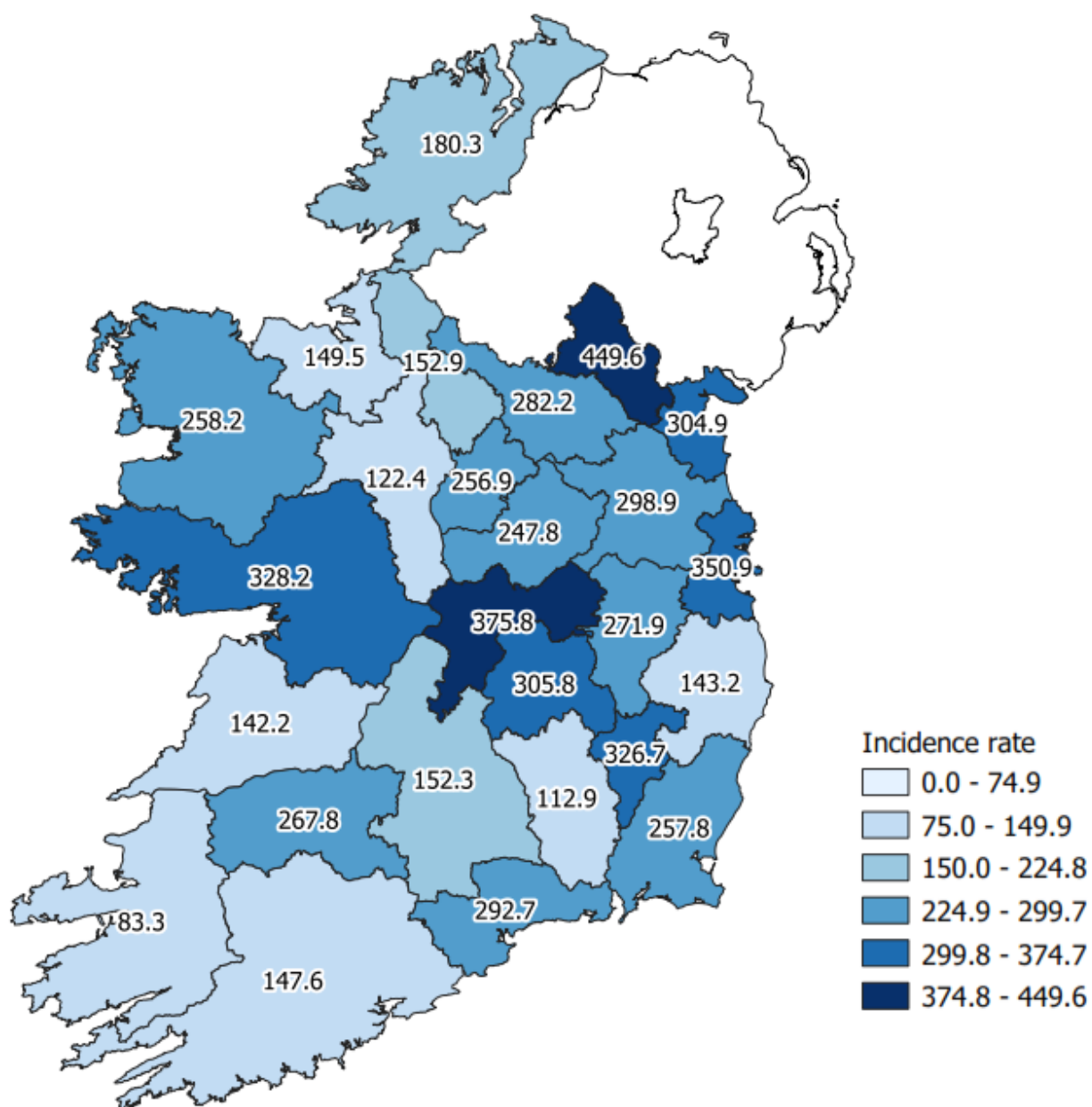


Figure 2: Cumulative 14-day incidence rates of confirmed COVID-19 cases per 100,000 population by county notified in Ireland between 03/02/2021 and 16/02/2021

Please do not directly compare county shades to previous maps. The categories listed will change as the number of cases change, which may result in changes to the map shading.

Table 4: Number and incidence of confirmed COVID-19 cases by Dublin Local Health Offices* (LHOs) notified in Ireland with a notification date between 03/02/2021 and 16/02/2021

CCA	Local Health Office	Number of cases in past 14 days based on notification date	14 day incidence rates based on notification dates
CCA1	Dublin South	190	139.6
CCA2	Dublin South East	606	489.9
CCA3	Dublin South City	267	178.1
CCA4	Dublin South West	446	277.2
CCA5	Dublin West	592	381.1
CCA6	Dublin North West	993	478.2
CCA7	Dublin North Central	994	643.0
CCA8	Dublin North	640	247.0
	Unknown		
	Dublin	4,728	350.9

Note: Local health offices (LHOs) came into operation on 1st September 2005, replacing Community Care Areas (CCAs). LHO population denominators are used in this report rather than CCA population denominators. The LHO rates were calculated using Census 2016 LHO denominator data extracted from the HSE Health Atlas and are not a direct match to the corresponding CCAs.

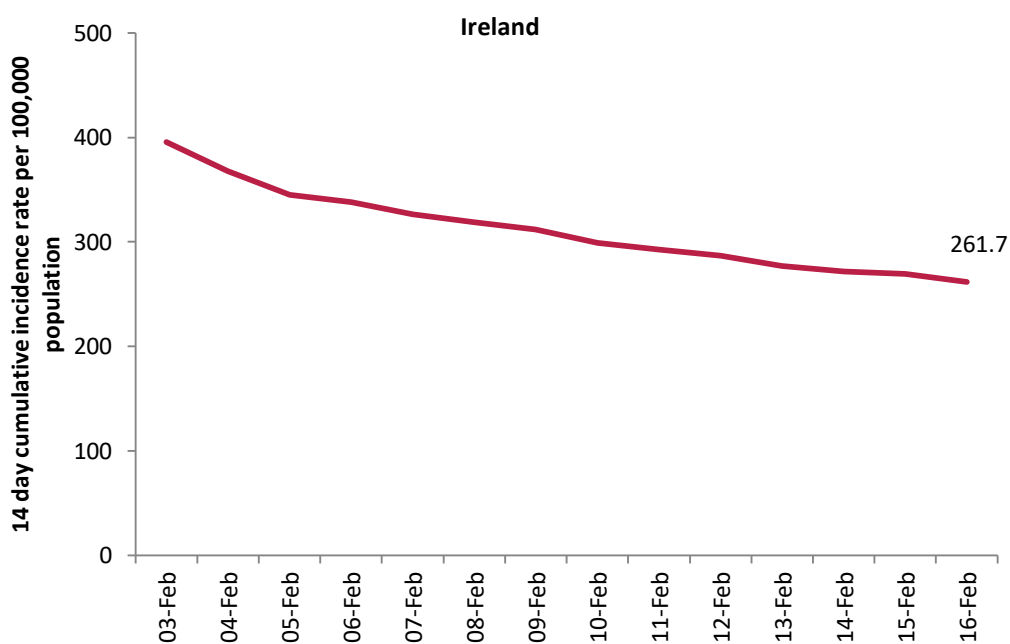


Figure 3: 14 day cumulative incidence rates per 100,000 population of confirmed cases of COVID-19 in Ireland* (03/02/2021 to 16/02/2021)

*14 day incidence rates per 100,000 populations of confirmed cases of COVID-19 for individual counties can be found in appendix 1 of this report

Table 5: Number of confirmed COVID-19 cases by most likely transmission source notified from 03/02/2021 to midnight 16/02/2021

Most likely transmission source	Number of cases	Percent
Travel related	65	0.52%
Close contact with a known confirmed case	6,329	50.79%
Healthcare setting acquired: patient	643	5.16%
Healthcare setting acquired: staff	411	3.30%
Community transmission	2,195	17.62%
Under investigation	2,817	22.61%
Total	12,460	100.00%

*Travel related cases include cases who acquire COVID-19 infection outside of Ireland (imported cases) and cases who acquire COVID-19 infection directly from imported cases

Table 6: Cumulative number of confirmed cases of COVID-19 notified in Ireland from 03/02/2021 to midnight 16/02/2021 by age group, hospitalisation and ICU admission*

Age Group (years)	Number of cases (n)	Cases hospitalised (n)	Cases hospitalised (%)	Cases admitted to ICU (n)	Cases admitted to ICU (%)
0-4 yrs	571	19	2.08	0	0
5-12 yrs	885	19	2.08	0	0
13-18 yrs	990	18	1.97	0	0
19-24 yrs	1,635	40	4.37	0	0
25-34 yrs	2,009	67	7.32	<5	
35-44 yrs	1,951	78	8.52	<5	
45-54 yrs	1,724	96	10.49	10	24.39
55-64 yrs	1,192	124	13.55	7	17.07
65-74 yrs	616	123	13.44	9	21.95
75-84 yrs	533	208	22.73	7	17.07
85+ yrs	352	122	13.33	<5	
Unknown	2	1	0.11	0	0
Total	12,460	915	100	41	100

* The number of cases hospitalised and admitted to ICU relate only to events notified in the last 14 days and do not include cases notified prior to this and admitted to hospital or ICU in the last 14 days

Deaths among COVID-19 cases

Table 7: Summary of deaths in all COVID-19 cases notified in Ireland from 03/02/2021 up to midnight 16/02/2021

	Number	Percent
Total number of deaths	47	
Confirmed	46	97.87
Possible	1	2.13
Total number of cases hospitalised	25	53.19
Total number of male cases	32	68.09
M:F ratio	2.13	
Median age (years)	83	
Mean age (years)	81	
Age range (years)	42 - 99	

Table 8: Number of deaths in all COVID-19 cases by sex and age group notified in Ireland from 03/02/2021 up to midnight 16/02/2021

Age group (years)	Female	Male	Total	Percent
<65 yrs	*	*	3	6.39
65-74 yrs	*	*	7	14.89
75-84 yrs	6	12	18	38.3
85+ yrs	6	13	19	40.43
Total	15	32	47	100
Percent	31.91	68.09		

* One or both values <5

Acknowledgements

Sincere thanks are extended to all those who are participating in the collection of data and reporting of data used in these reports. This includes the HSE COVID-19 Contact Management Programme (CMP), staff in ICU units, notifying clinicians, laboratory staff, public health doctors, nurses, surveillance scientists, microbiologists and administrative staff.

Report prepared by COVID-19 Epidemiology Team, HPSC

Technical Notes

1. Data Source

Data are based on statutory notifications and were extracted from Computerised Infectious Disease Reporting (CIDR) system. Data are provisional and subject to ongoing review, validation and update. As a result, figures in this report may differ from previously published figures.

2. Population data

Population data were taken from Census 2016. Data were aggregated into the following age groups for the analysis: 0-4 years, 5-12 years, 13-18 years, 19-24 years, 25-34 years, 35-44 years, 45-54 years, 55-64 years, 65-74 years, 75-84 years and ≥ 85 years.

3. Transmission classification

Transmission classification is based on country of infection as well as enhanced exposure data (international travel; close contact of a case) recorded in CIDR. Transmission is classified as 'unknown' due to incomplete data on CIDR.

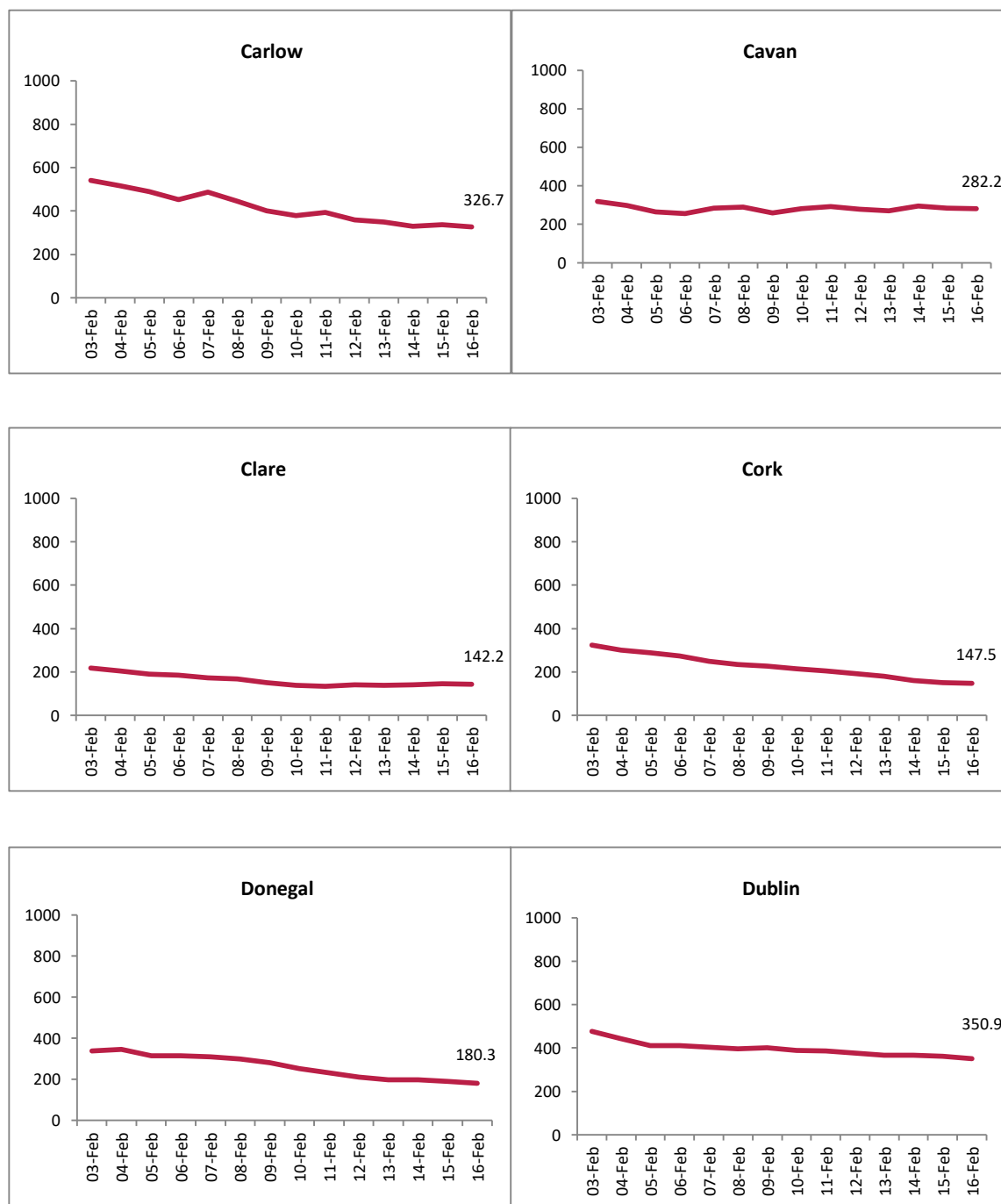
Travel related cases include cases who acquire COVID-19 infection outside of Ireland (imported cases) and cases who acquire COVID-19 infection directly from imported cases.

WHO definition of transmission classification is specified below:

- Community transmission is evidenced by the inability to relate confirmed cases through chains of transmission for a large number of cases, or by increasing positive tests through routine screening of sentinel samples.
- Local transmission indicates locations where the source of infection is within the reporting location.
- Imported cases only indicates locations where all cases have been acquired outside the location of reporting.

Appendix 1

Figure A. 14 day cumulative incidence rates per 100,000 population of confirmed cases of COVID-19 by county (03/02/2021 to 16/02/2021)



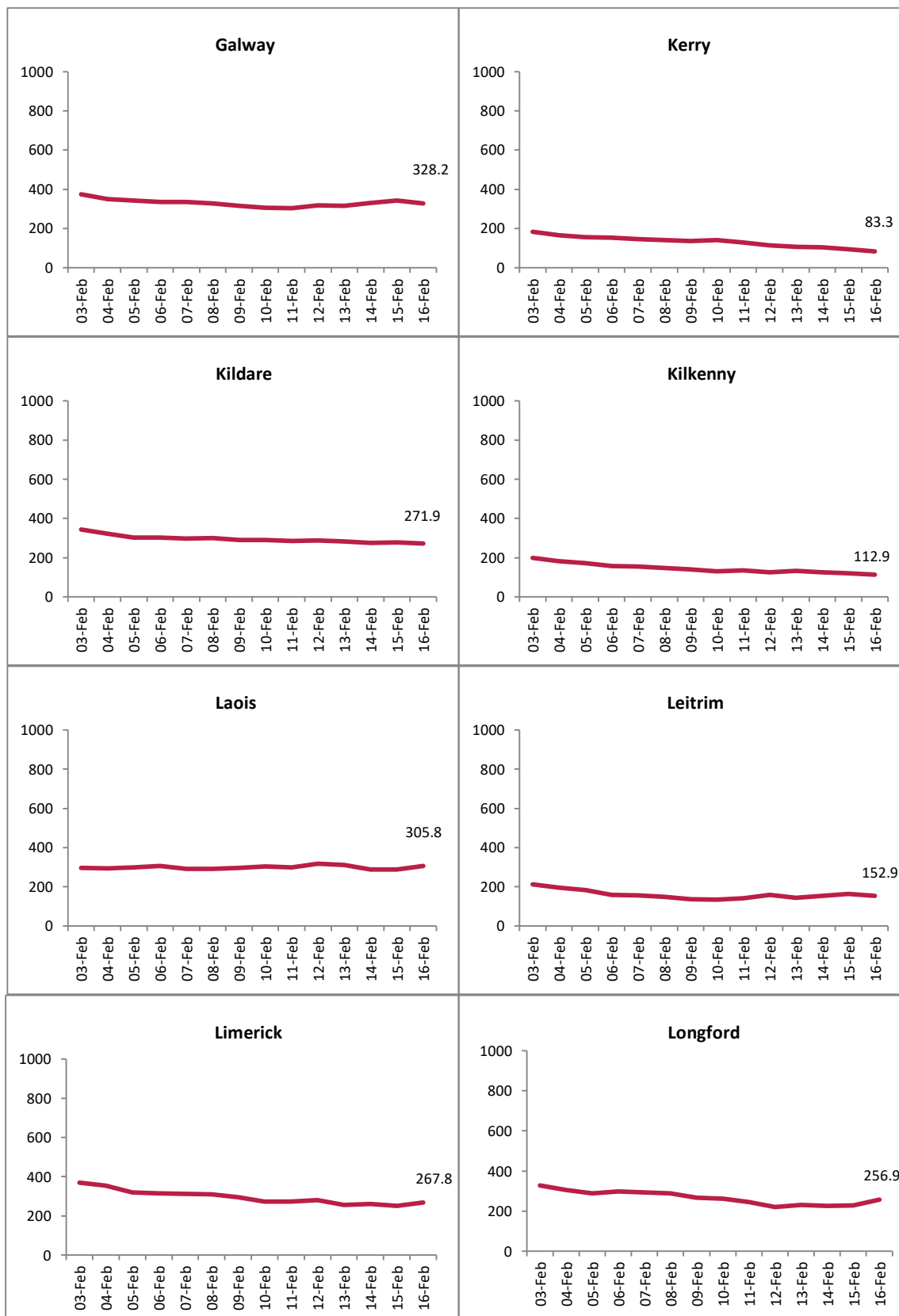
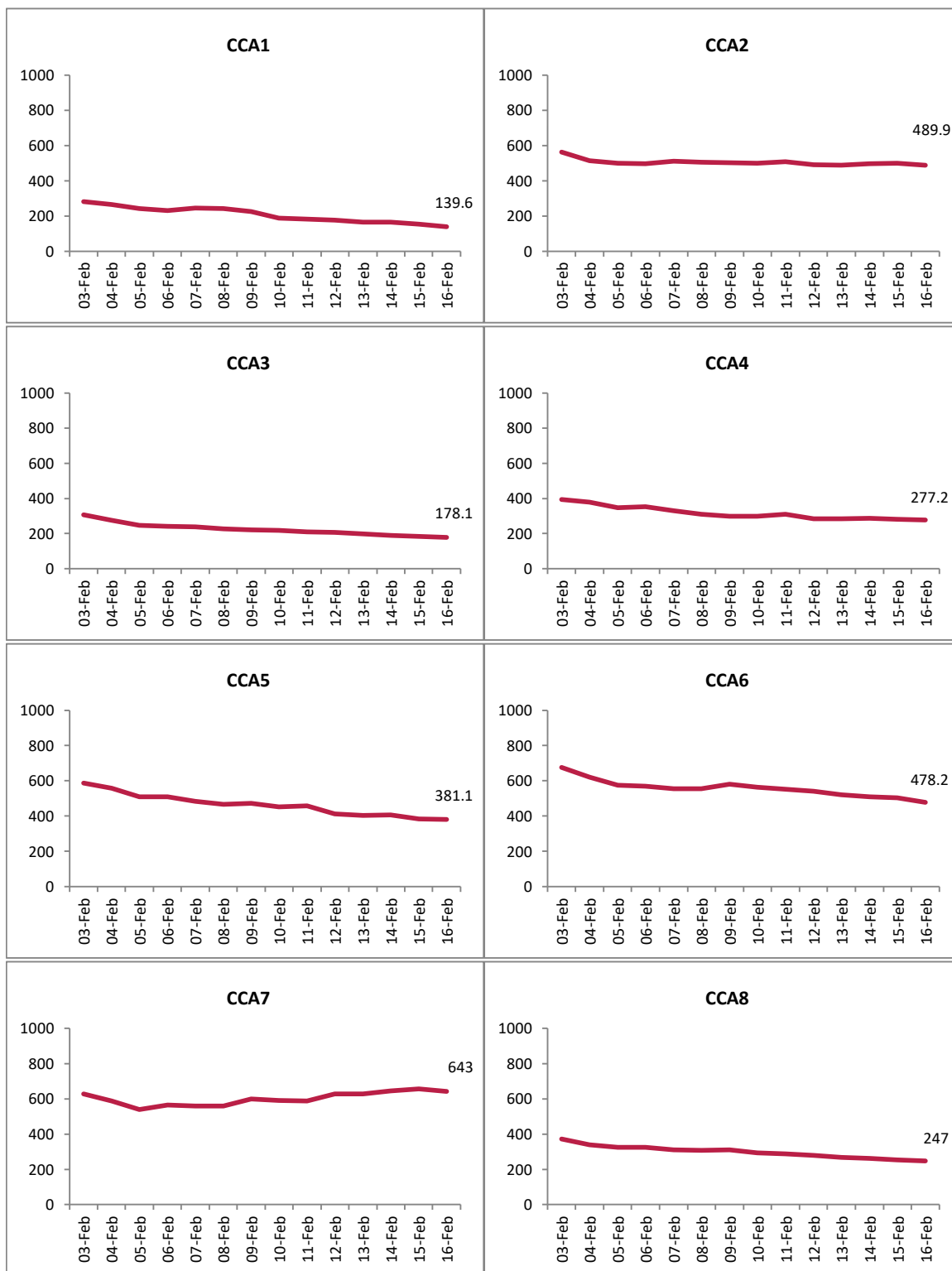






Figure B. 14 day cumulative incidence rates per 100,000 population of confirmed cases of COVID-19 by Dublin CCA (03/02/2021 to 16/02/2021)



Report prepared by Health Protection Surveillance Centre on 17/02/2021