



Epidemiology of COVID-19 in Ireland - 14 day report

Report prepared by HPSC on 15/02/2021

Summary characteristics of confirmed COVID-19 cases notified in Ireland from 01/02/2021 up to midnight 14/02/2021

	Number	Percent
Total number of confirmed cases	12,959	
National incidence of confirmed cases per 100,000 population	272.14	
Number of cases hospitalised*	944	7.28
Number of cases admitted to ICU*	34	0.26
Number of deaths among confirmed cases	59	0.46
Case fatality ratio (CFR, %)	0.46	
National incidence of confirmed deaths per 100,000 population	1.24	
Number of cases** associated with clusters	1,576	12.16
Number of imported cases	4	0.03
Number of cases in healthcare workers	945	7.29
Males	6,304	48.65
Females	6,639	51.23
M:F ratio	0.95	
Median age (years)	36	
Mean age (years)	38	
Age range (years)	0 - 103	

* The number of cases hospitalised and admitted to ICU relate only to events notified in the last 14 days and do not include cases notified prior to this and admitted to hospital or ICU in the last 14 days

**Cases may be associated with outbreaks notified outside the timeframe of this report
01/02/2021 - 14/02/2021

Note: Data were extracted from Computerised Infectious Disease Reporting (CIDR) system at 07:50 on 15/02/2021 and are provisional and subject to ongoing review, validation and update. As a result, figures in this report may differ from previously published figures.

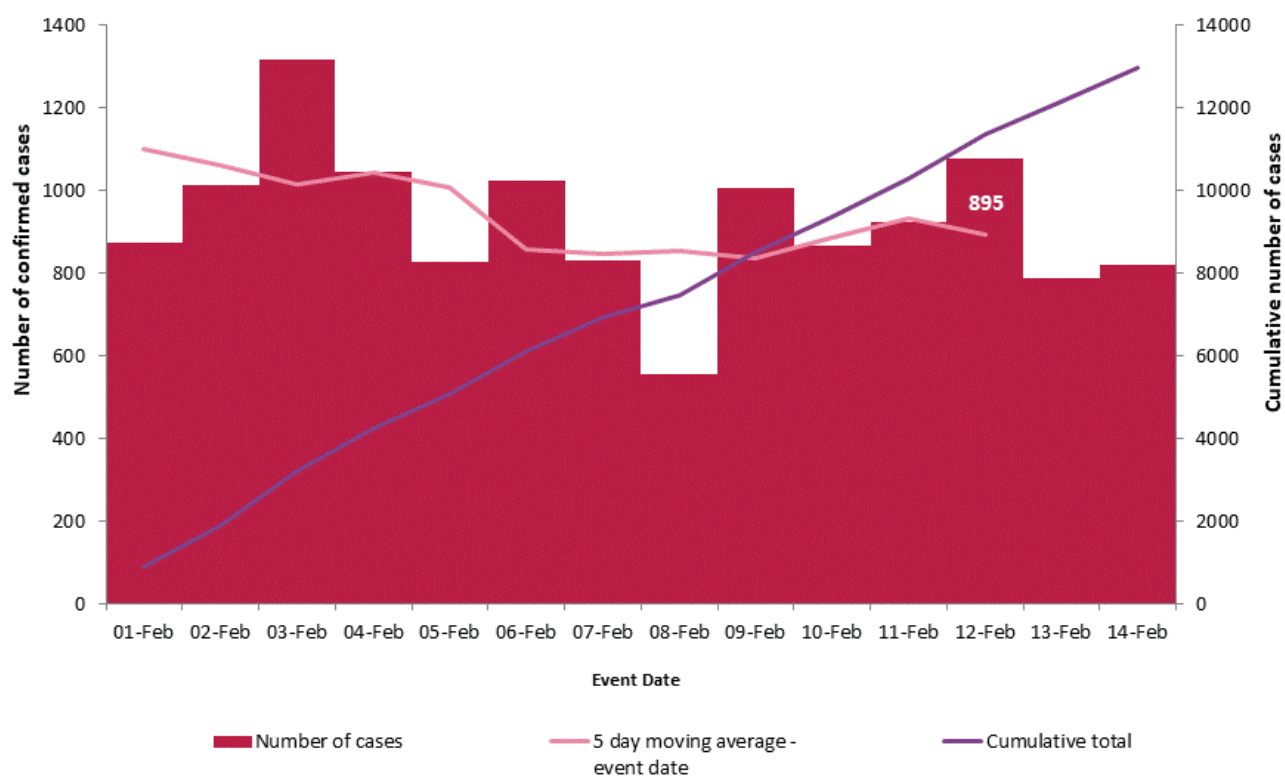


Figure 1. Daily number and cumulative number of confirmed cases of COVID-19, and 5-day moving average, by notification date (n=12,959)

Table 1: Characteristics of confirmed COVID-19 cases notified in Ireland from 01/02/2021 up to midnight on 14/02/202

Characteristic		Number of cases	Percent
Total number of confirmed cases		12,959	100
Sex	Male:Female ratio	0.95	
	Male	6,304	48.65
	Female	6,639	51.23
	Unknown	16	0.12
Age	Median age (years)	36	
	Mean age (years)	38	
	Age range (years)	0 - 103	
	0-4 yrs	562	4.34
	5-12 yrs	877	6.77
	13-18 yrs	979	7.55
	19-24 yrs	1,604	12.38
	25-34 yrs	2,083	16.07
	35-44 yrs	2,072	15.99
	45-54 yrs	1,834	14.15
	55-64 yrs	1,272	9.82
	65-74 yrs	658	5.08
	75-84 yrs	566	4.37
	85+ yrs	447	3.45
	Unknown	5	0.04
Symptom status at time of test*	Yes	7,193	55.51
	No	2,187	16.88
	Unknown	3,579	27.62

*Symptom status is recorded at the time of test and is not updated, therefore a proportion of the asymptomatic cases may subsequently develop symptoms however this will not be captured in the data.

Table 2: Number of confirmed COVID-19 cases by community healthcare organisation (CHO) notified in Ireland from 01/02/2021 to midnight 14/02/2021

CHO Area	Number of confirmed cases	Incidence per 100,000 population
CHO1	980	250.5
CHO2	1,274	281.2
CHO3	771	200.3
CHO4	1,030	149.2
CHO5	1,253	245.5
CHO6	1,077	281.1
CHO7	1,997	282.2
CHO8	1,839	297.0
CHO9	2,738	440.6
Unknown	0	
Total	12,959	272.1

Table 3: Number of confirmed COVID-19 cases by county notified in Ireland from 01/02/2021 to midnight 14/02/2021

County	Number of confirmed cases	Incidence per 100,000 population	5 day moving average of confirmed cases (10/02/2021-14/02/2021)
Monaghan	277	451.2	13
Dublin	4,961	368.2	356
Carlow	198	347.8	12
Offaly	271	347.6	23
Galway	852	330.2	75
Louth	415	322.0	27
Waterford	370	318.5	20
Meath	592	303.5	40
Cavan	224	294.1	19
Wexford	424	283.2	24
Kildare	613	275.5	45
Laois	232	273.9	16
Westmeath	235	264.7	20
Limerick	514	263.7	39
Mayo	344	263.6	26
Longford	92	225.1	6
Donegal	317	199.1	18
Sligo	116	177.0	7
Wicklow	238	167.1	10
Cork	877	161.5	43
Leitrim	47	146.7	5
Tipperary	231	144.8	16
Clare	167	140.6	13
Kilkenny	121	121.9	7
Roscommon	78	120.8	7
Kerry	153	103.6	7
Total	12,959	272.1	895

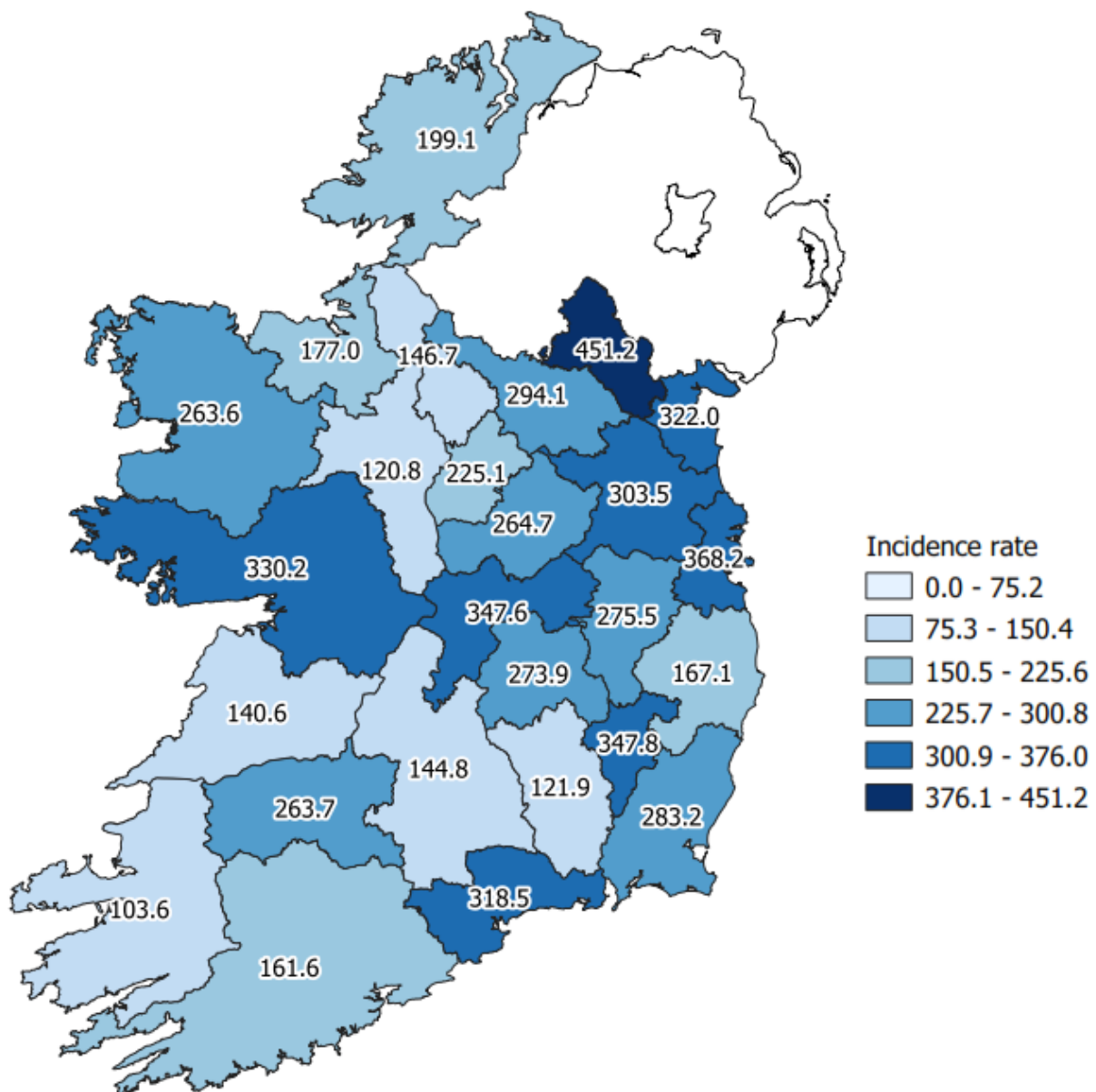


Figure 2: Cumulative incidence rates of confirmed COVID-19 cases per 100,000 population by county notified in Ireland between 01/02/2021 and 14/02/2021

Please do not directly compare county shades to previous maps. The categories listed will change as the number of cases change, which may result in changes to the map shading.

Table 4: Number and incidence of confirmed COVID-19 cases by Dublin Local Health Offices* (LHOs) notified in Ireland with a notification date between 01/02/2021 and 14/02/2021

CCA	Local Health Office	Number of cases in past 14 days based on notification date	14 day incidence rates based on notification dates
CCA1	Dublin South	227	166.8
CCA2	Dublin South East	616	498.0
CCA3	Dublin South City	283	188.7
CCA4	Dublin South West	463	287.8
CCA5	Dublin West	634	408.1
CCA6	Dublin North West	1,060	510.4
CCA7	Dublin North Central	996	644.3
CCA8	Dublin North	682	263.2
	Unknown		
	Dublin	4,961	368.2

Note: Local health offices (LHOs) came into operation on 1st September 2005, replacing Community Care Areas (CCAs). LHO population denominators are used in this report rather than CCA population denominators. The LHO rates were calculated using Census 2016 LHO denominator data extracted from the HSE Health Atlas and are not a direct match to the corresponding CCAs.

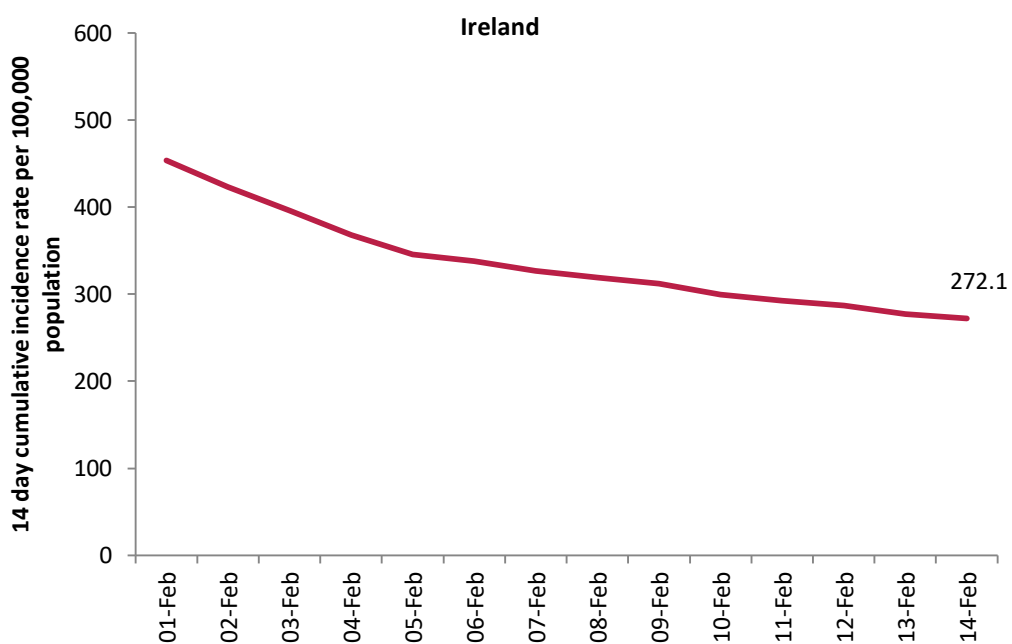


Figure 3: 14 day cumulative incidence rates per 100,000 population of confirmed cases of COVID-19 in Ireland* (01/02/2021 to 14/02/2021)

*14 day incidence rates per 100,000 populations of confirmed cases of COVID-19 for individual counties can be found in appendix 1 of this report

Table 5: Number of confirmed COVID-19 cases by most likely transmission source notified from 01/02/2021 to midnight 14/02/2021

Most likely transmission source	Number of cases	Percent
Travel related*	63	0.49%
Close contact with a known confirmed case	5,553	42.85%
Healthcare setting acquired: patient	757	5.84%
Healthcare setting acquired: staff	480	3.70%
Community transmission	2,132	16.45%
Under investigation	3,974	30.67%
Total	12,959	100.00%

*Travel related cases include cases who acquire COVID-19 infection outside of Ireland (imported cases) and cases who acquire COVID-19 infection directly from imported cases

Table 6: Cumulative number of confirmed cases of COVID-19 notified in Ireland from 01/02/2021 to midnight 14/02/2021 by age group, hospitalisation and ICU admission*

Age Group (years)	Number of cases (n)	Cases hospitalised (n)	Cases hospitalised (%)	Cases admitted to ICU (n)	Cases admitted to ICU (%)
0-4 yrs	562	18	1.91	0	0
5-12 yrs	877	21	2.22	0	0
13-18 yrs	979	18	1.91	0	0
19-24 yrs	1604	44	4.66	0	0
25-34 yrs	2083	72	7.63	0	0
35-44 yrs	2072	77	8.16	<5	
45-54 yrs	1834	97	10.28	9	26.47
55-64 yrs	1272	126	13.35	7	20.59
65-74 yrs	658	129	13.67	11	32.35
75-84 yrs	566	210	22.25	<5	
85+ yrs	447	131	13.88	<5	
Unknown	5	1	0.11	0	0
Total	12,959	944	100	34	100

* The number of cases hospitalised and admitted to ICU relate only to events notified in the last 14 days and do not include cases notified prior to this and admitted to hospital or ICU in the last 14 days

Deaths among COVID-19 cases

Table 7: Summary of deaths in all COVID-19 cases notified in Ireland from 01/02/2021 up to midnight 14/02/2021

	Number	Percent
Total number of deaths	63	
Confirmed	59	93.65
Possible	4	6.35
Total number of cases hospitalised	30	47.62
Total number of male cases	37	58.73
M:F ratio	1.42	
Median age (years)	84	
Mean age (years)	82	
Age range (years)	43 - 100	

Table 8: Number of deaths in all COVID-19 cases by sex and age group notified in Ireland from 01/02/2021 up to midnight 14/02/2021

Age group (years)	Female	Male	Total	Percent
<65 yrs	*	*	4	6.35
65-74 yrs	*	*	8	12.7
75-84 yrs	8	12	20	31.75
85+ yrs	14	17	31	49.21
Total	26	37	63	100
Percent	41.27	58.73		

* One or both values <5

Acknowledgements

Sincere thanks are extended to all those who are participating in the collection of data and reporting of data used in these reports. This includes the HSE COVID-19 Contact Management Programme (CMP), staff in ICU units, notifying clinicians, laboratory staff, public health doctors, nurses, surveillance scientists, microbiologists and administrative staff.

Report prepared by COVID-19 Epidemiology Team, HPSC

Technical Notes

1. Data Source

Data are based on statutory notifications and were extracted from Computerised Infectious Disease Reporting (CIDR) system at 08:18 on 03/02/2021. Data are provisional and subject to ongoing review, validation and update. As a result, figures in this report may differ from previously published figures.

2. Population data

Population data were taken from Census 2016. Data were aggregated into the following age groups for the analysis: 0-4 years, 5-12 years, 13-18 years, 19-24 years, 25-34 years, 35-44 years, 45-54 years, 55-64 years, 65-74 years, 75-84 years and ≥ 85 years.

3. Transmission classification

Transmission classification is based on country of infection as well as enhanced exposure data (international travel; close contact of a case) recorded in CIDR. Transmission is classified as 'unknown' due to incomplete data on CIDR.

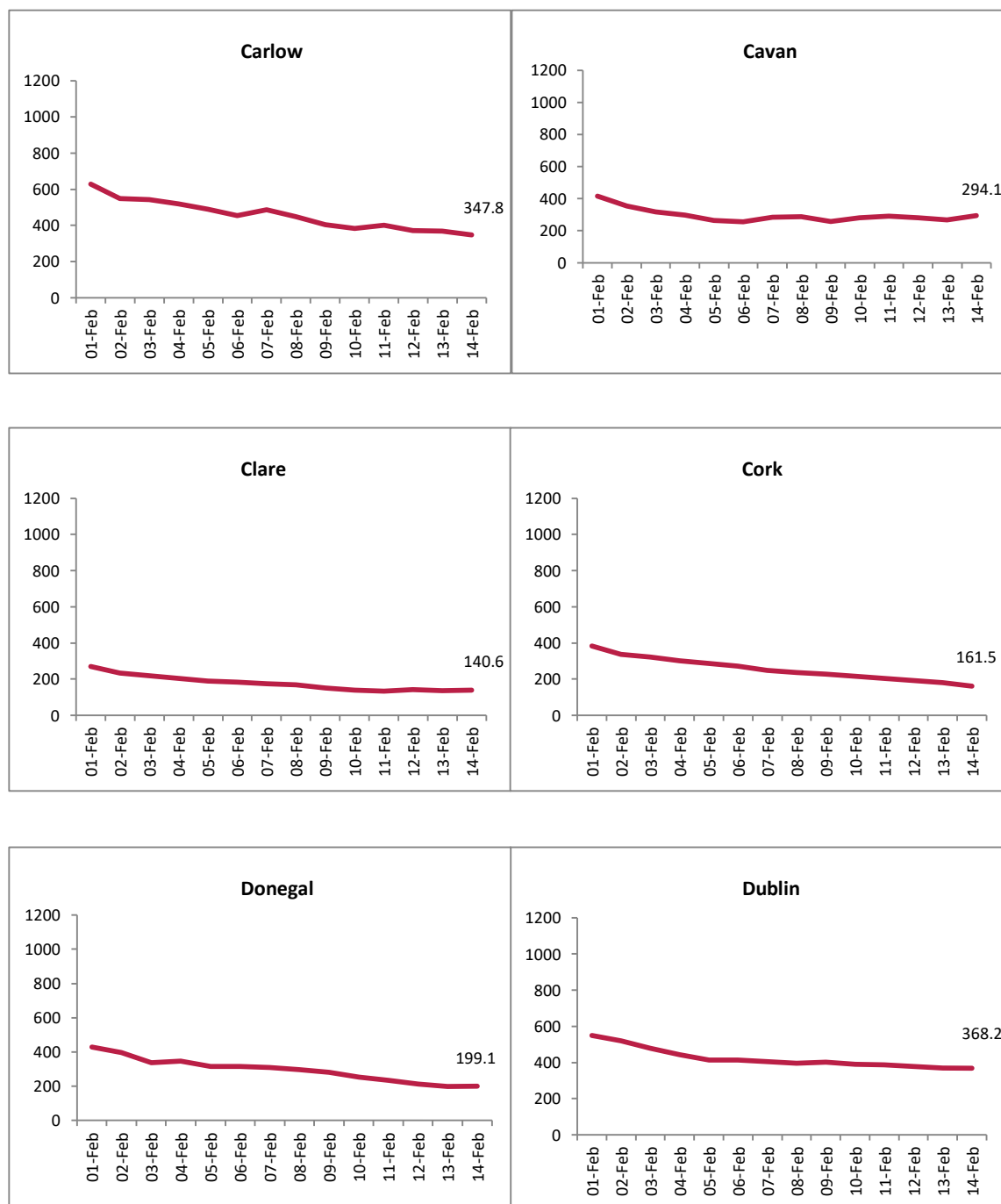
Travel related cases include cases who acquire COVID-19 infection outside of Ireland (imported cases) and cases who acquire COVID-19 infection directly from imported cases.

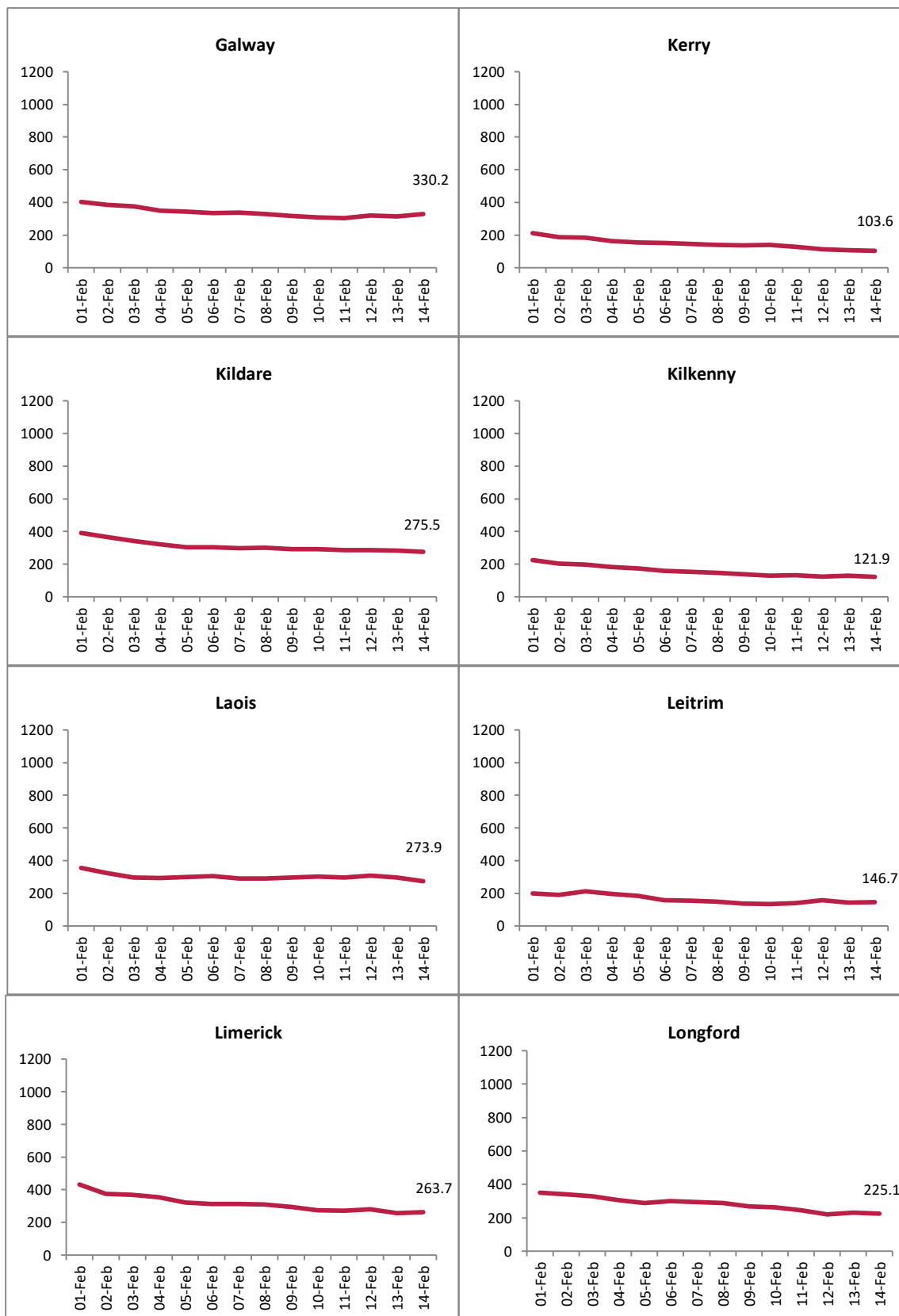
WHO definition of transmission classification is specified below:

- Community transmission is evidenced by the inability to relate confirmed cases through chains of transmission for a large number of cases, or by increasing positive tests through routine screening of sentinel samples.
- Local transmission indicates locations where the source of infection is within the reporting location.
- Imported cases only indicates locations where all cases have been acquired outside the location of reporting.

Appendix 1

Figure A. 14 day cumulative incidence rates per 100,000 population of confirmed cases of COVID-19 by county (01/02/2021 to 14/02/2021)







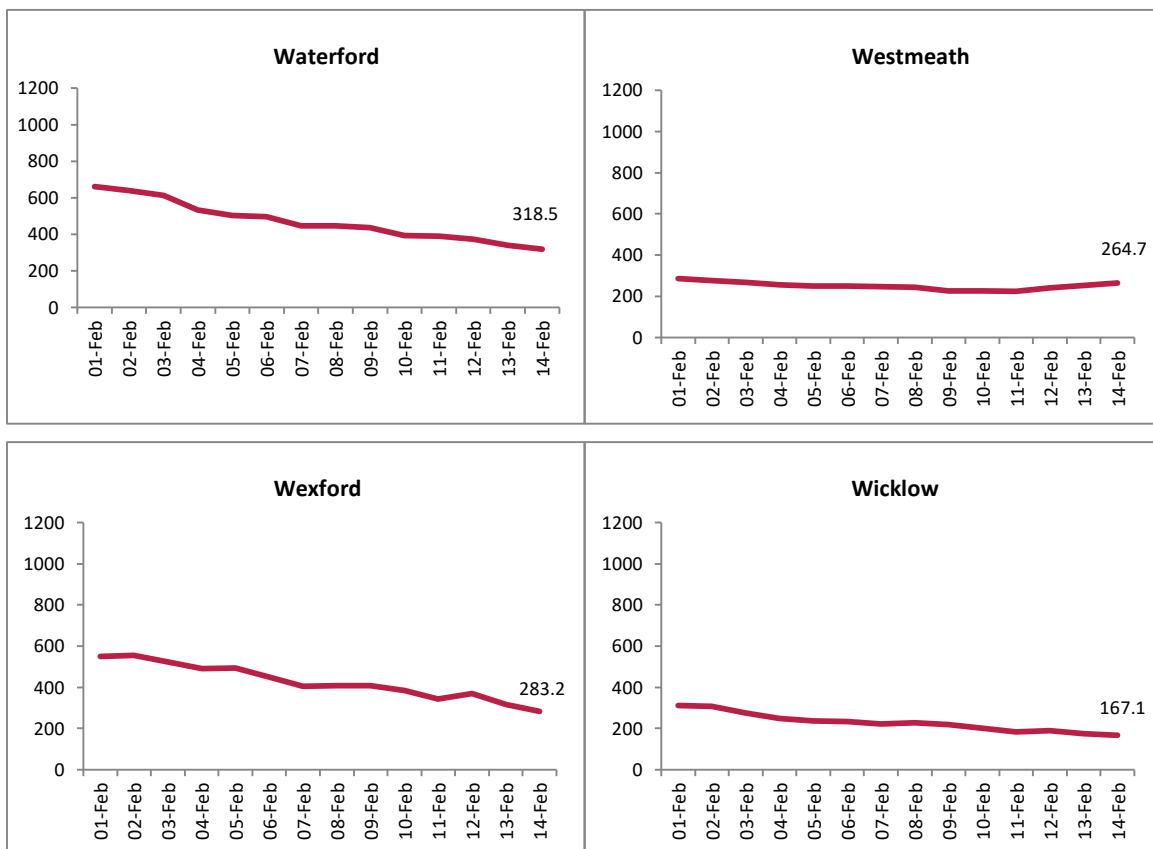
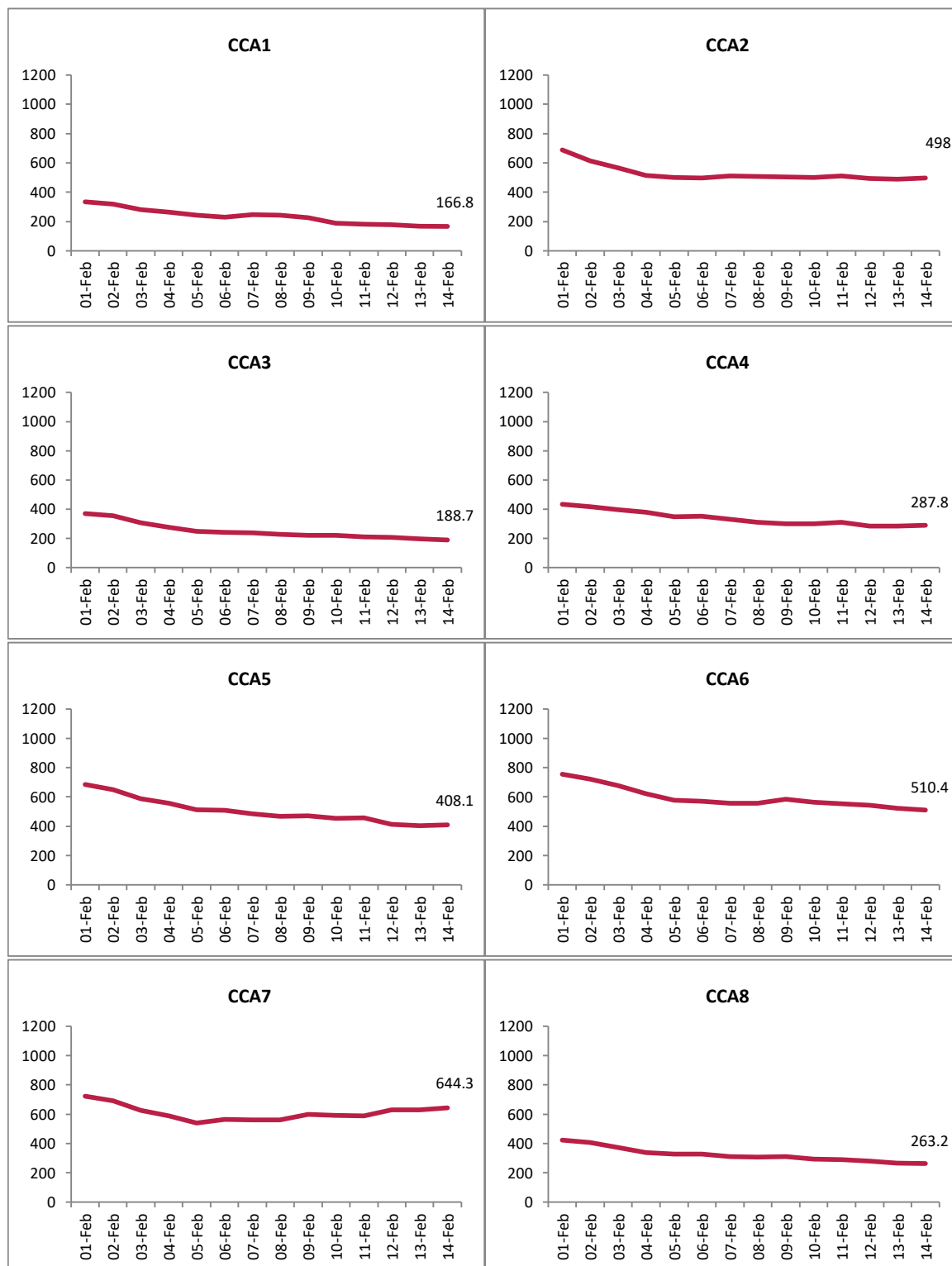


Figure B. 14 day cumulative incidence rates per 100,000 population of confirmed cases of COVID-19 by Dublin CCA (01/02/2021 to 14/02/2021)



Report prepared by Health Protection Surveillance Centre on 15/02/2021