



Epidemiology of COVID-19 in Ireland - 14 day report

Report prepared by HPSC on 29/03/2021

Summary characteristics of confirmed COVID-19 cases notified in Ireland from 15/03/2021 up to midnight 28/03/2021

	Number	Percent
Total number of confirmed cases	7,796	
National incidence of confirmed cases per 100,000 population	163.72	
Number of cases hospitalised*	351	4.5
Number of cases admitted to ICU*	14	0.18
Number of deaths among confirmed cases	16	0.21
Case fatality ratio (CFR, %)	0.21	
National incidence of confirmed deaths per 100,000 population	0.34	
Number of cases** associated with clusters	1,782	22.86
Number of imported cases	74	0.95
Number of cases in healthcare workers	202	2.59
% HCW where HCW status known (n=6,040)		3.34
Males	3,869	49.63
Females	3,919	50.27
M:F ratio	0.99	
Median age (years)	32	
Mean age (years)	32	
Age range (years)	0 - 99	

* The number of cases hospitalised and admitted to ICU relate only to events notified in the last 14 days and do not include cases notified prior to this and admitted to hospital or ICU in the last 14 days

**Cases may be associated with outbreaks notified outside the timeframe of this report
15/03/2021 - 28/03/2021

Note: Data were extracted from Computerised Infectious Disease Reporting (CIDR) system at 09:13 on 29/03/2021 and are provisional and subject to ongoing review, validation and update. As a result, figures in this report may differ from previously published figures.

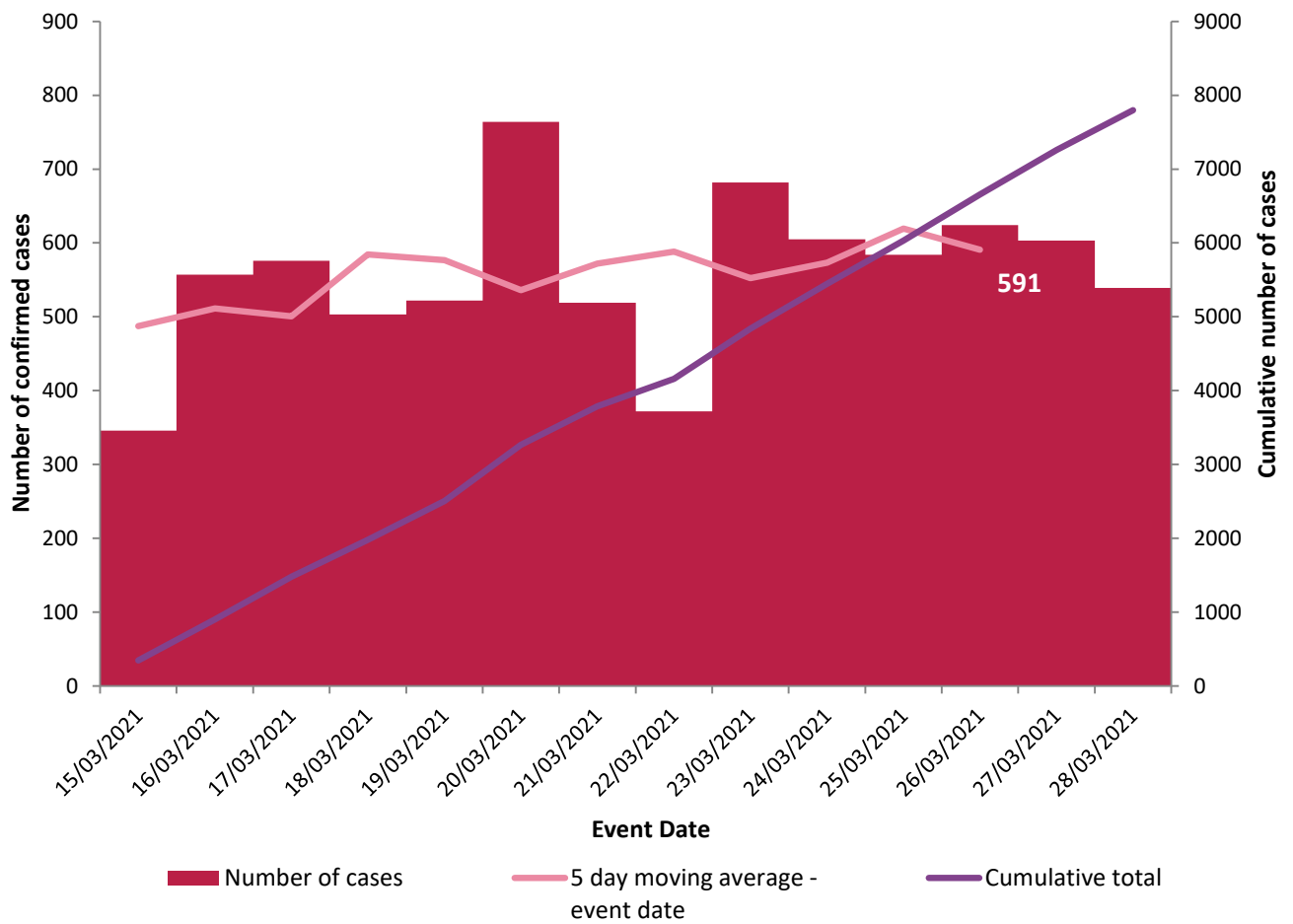


Figure 1. Daily number and cumulative number of confirmed cases of COVID-19, and 5-day moving average, by notification date (n=7,796)

Table 1: Characteristics of confirmed COVID-19 cases notified in Ireland from 15/03/2021 up to midnight on 28/03/2021

Characteristic		Number of cases	Percent
Total number of confirmed cases		7,796	100
Sex	Male:Female ratio	0.99	
	Male	3,869	49.63
	Female	3,919	50.27
	Unknown	8	0.1
Age	Median age (years)	32	
	Mean age (years)	32	
	Age range (years)	0 - 99	
	0-4 yrs	721	9.25
	5-12 yrs	1,057	13.56
	13-18 yrs	617	7.91
	19-24 yrs	671	8.61
	25-34 yrs	1,266	16.24
	35-44 yrs	1,430	18.34
	45-54 yrs	863	11.07
	55-64 yrs	563	7.22
	65-74 yrs	332	4.26
	75-84 yrs	199	2.55
	85+ yrs	77	0.99
Symptom status at time of test*	Yes	4,468	57.31
	No	1,636	20.99
	Unknown	1,692	21.7

*Symptom status is recorded at the time of test and is not updated, therefore a proportion of the asymptomatic cases may subsequently develop symptoms however this will not be captured in the data.

Table 2: Number of confirmed COVID-19 cases by community healthcare organisation (CHO) notified in Ireland from 15/03/2021 to midnight 28/03/2021

CHO Area	Number of confirmed cases	Incidence per 100,000 population
CHO1	657	167.9
CHO2	474	104.6
CHO3	376	97.7
CHO4	269	39.0
CHO5	615	120.5
CHO6	585	152.7
CHO7	1,351	190.9
CHO8	1,410	227.7
CHO9	2,059	331.3
Total	7,796	163.7

Table 3: Number of confirmed COVID-19 cases by county notified in Ireland from 15/03/2021 to midnight 28/03/2021

County	Number of confirmed cases	Incidence per 100,000 population	5 day moving average of confirmed cases (24/03/2021-28/03/2021)
Offaly	355	455.4	27
Donegal	449	282.0	36
Dublin	3353	248.9	249
Westmeath	194	218.5	21
Kildare	483	217.1	39
Meath	420	215.3	29
Longford	87	212.9	7
Laois	153	180.6	15
Tipperary	266	166.7	18
Cavan	120	157.5	13
Louth	201	156.0	18
Wexford	219	146.3	16
Roscommon	85	131.7	6
Waterford	140	120.5	7
Galway	304	117.8	18
Wicklow	159	111.6	14
Limerick	193	99.0	18
Carlow	56	98.4	2
Mayo	85	65.1	9
Leitrim	20	62.4	2
Sligo	40	61.0	1
Clare	70	58.9	5
Kilkenny	47	47.4	4
Monaghan	28	45.6	2
Cork	222	40.9	18
Kerry	47	31.8	1
Total	7,796	163.7	591

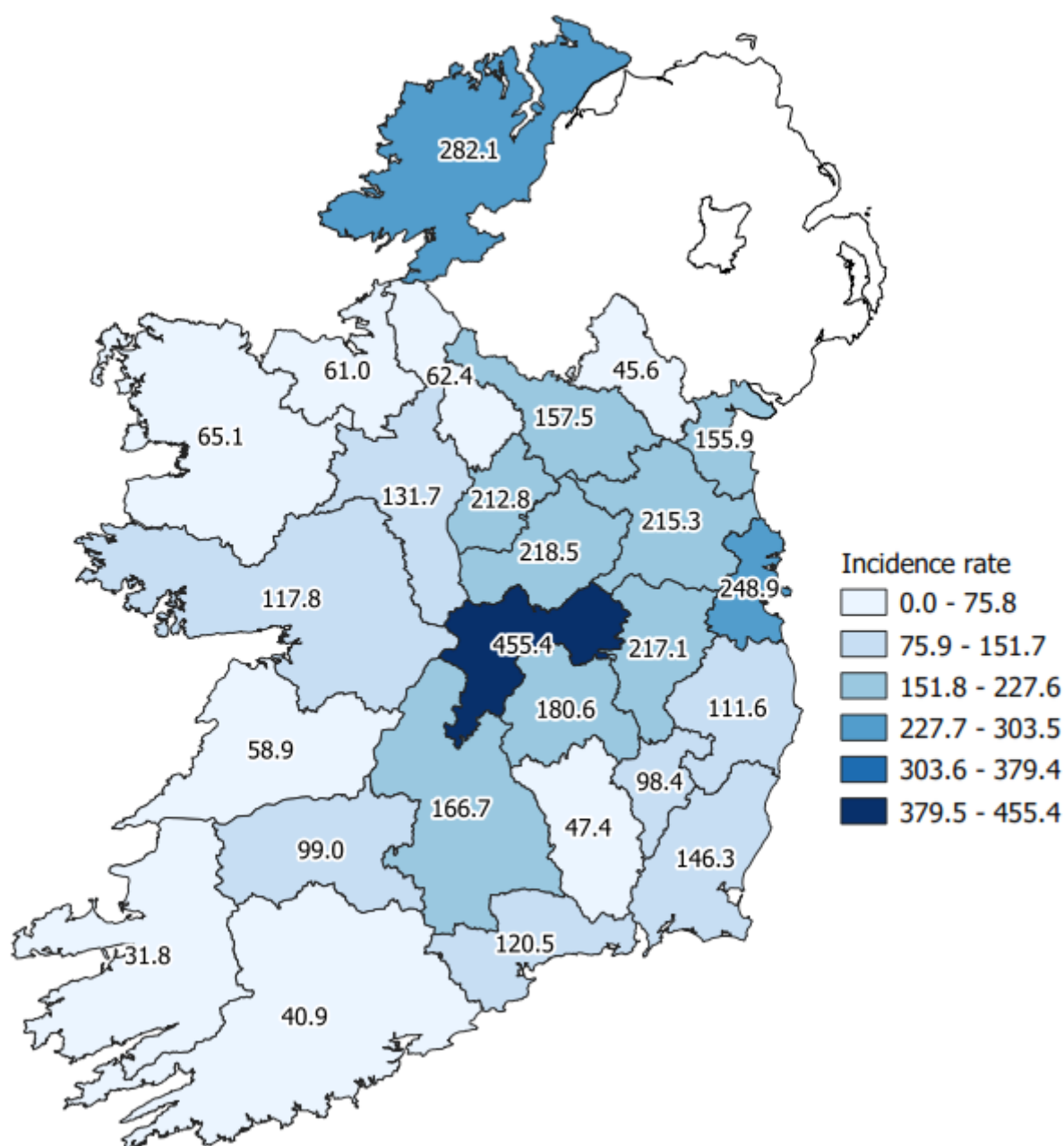


Figure 2: Cumulative incidence rates of confirmed COVID-19 cases per 100,000 population by county notified in Ireland between 15/03/2021 and 28/03/2021

Please do not directly compare county shades to previous maps. The categories listed will change as the number of cases change, which may result in changes to the map shading.

Number and incidence of confirmed COVID-19 cases by Dublin Local Health Offices (LHOs) notified in Ireland

Please be advised that the CCA data are being validated and this table will be reintroduced once validation is complete.

Note: Local health offices (LHOs) came into operation on 1st September 2005, replacing Community Care Areas (CCAs). LHO population denominators are used in this report rather than CCA population denominators. The LHO rates were calculated using Census 2016 LHO denominator data extracted from the HSE Health Atlas and are not a direct match to the corresponding CCAs.

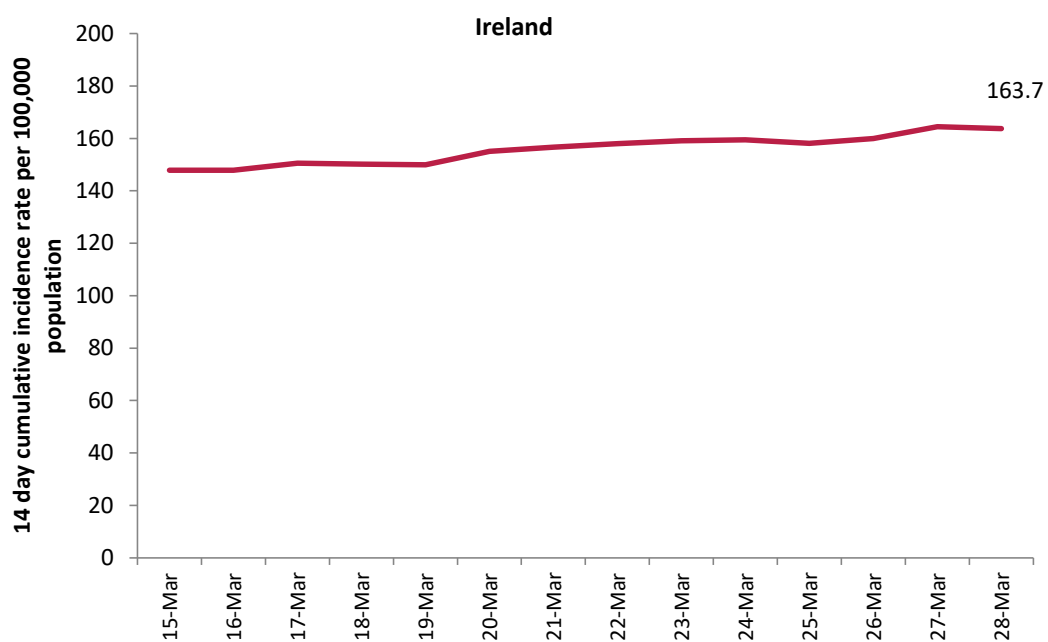


Figure 3: 14 day cumulative incidence rates per 100,000 population of confirmed cases of COVID-19 in Ireland* (15/03/2021 to 28/03/2021)

*14 day incidence rates per 100,000 populations of confirmed cases of COVID-19 for individual counties can be found in appendix 1 of this report

Table 4: Number of confirmed COVID-19 cases by most likely transmission source notified from 15/03/2021 to midnight 28/03/2021

Most likely transmission source	Number of cases	Percent
Travel related*	148	1.90%
Close contact with a known confirmed case	4131	52.99%
Healthcare setting acquired: patient	127	1.63%
Healthcare setting acquired: staff	51	0.65%
Community transmission	1521	19.51%
Under investigation	1818	23.32%
Total	7796	100.00%

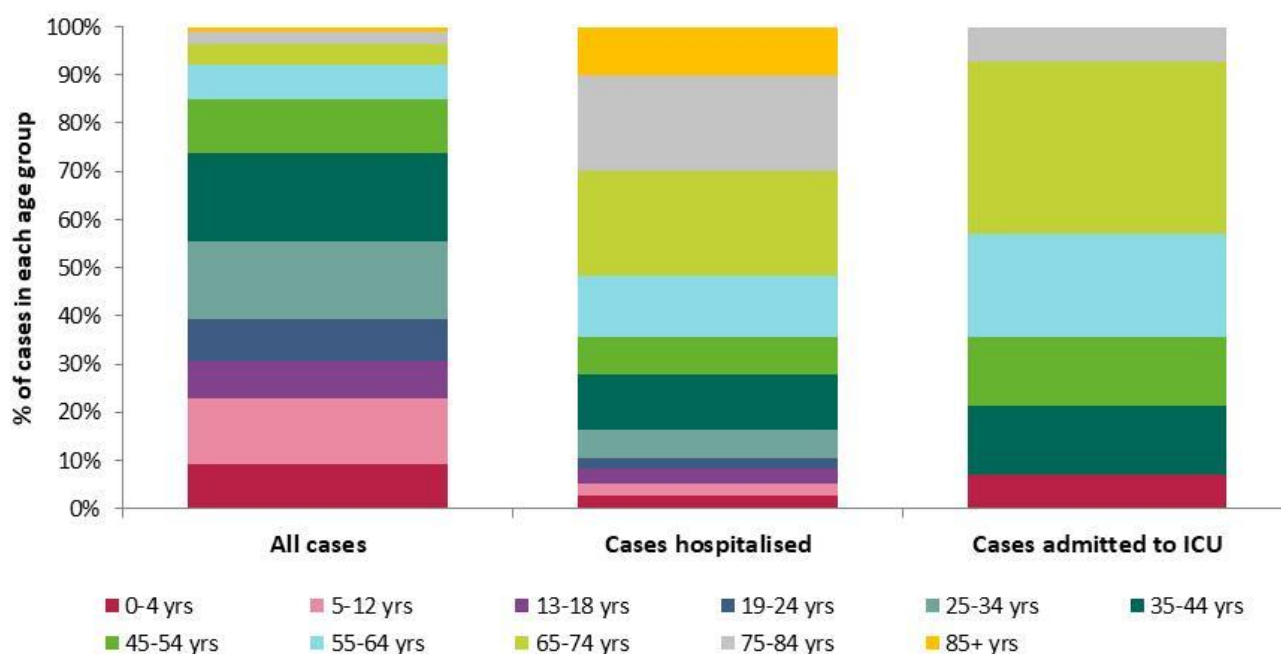
*Travel related cases include cases who acquire COVID-19 infection outside of Ireland (imported cases) and cases who acquire COVID-19 infection directly from imported cases

Table 5: Cumulative number of confirmed cases of COVID-19 notified in Ireland from 15/03/2021 to midnight 28/03/2021 by age group, hospitalisation and ICU admission*

Age Group (years)	Number of cases (n)	Cases hospitalised (n)	Cases hospitalised (%)	Cases admitted to ICU (n)	Cases admitted to ICU (%)
0-4 yrs	721	10	2.85	<5	
5-12 yrs	1057	8	2.28	0	0
13-18 yrs	617	11	3.13	0	0
19-24 yrs	671	8	2.28	0	0
25-34 yrs	1266	20	5.70	0	0
35-44 yrs	1430	41	11.68	<5	
45-54 yrs	863	27	7.69	<5	
55-64 yrs	563	45	12.82	<5	
65-74 yrs	332	76	21.65	5	35.71
75-84 yrs	199	70	19.94	<5	
85+ yrs	77	35	9.97	0	0
Total	7,796	351	100	14	100

* The number of cases hospitalised and admitted to ICU relate only to events notified in the last 14 days and do not include cases notified prior to this and admitted to hospital or ICU in the last 14 days

Figure 4: Percentage of confirmed cases of COVID-19 notified in Ireland from 15/03/2021 to midnight 28/03/2021 in each age group, all cases, cases admitted to hospital and cases admitted to ICU*



Deaths among COVID-19 cases

Table 6: Summary of deaths in all COVID-19 cases notified in Ireland from 15/03/2021 up to midnight 28/03/2021

	Number	Percent
Total number of deaths	17	
Confirmed	16	94.12
Probable	1	5.88
Total number of cases hospitalised	13	76.47
Number with underlying clinical conditions	16	94.12*
Total number of male cases	11	64.71
M:F ratio	1.83	
Median age (years)	77	
Mean age (years)	75	
Age range (years)	49 - 93	

*The proportion of cases with underlying clinical conditions may be underestimated due to a delay in updating/validating data.

Table 7: Number of deaths in all COVID-19 cases by sex and age group notified in Ireland from 15/03/2021 up to midnight 28/03/2021

Age group (years)	Female	Male	Total	Percent
<75 yrs	*	*	7	41.18
75-84 yrs	*	*	10	52.94
Total	6	11	17	100
Percent	35.29	64.71		

*One or both values <5

Acknowledgements

Sincere thanks are extended to all those who are participating in the collection of data and reporting of data used in these reports. This includes the HSE COVID-19 Contact Management Programme (CMP), staff in ICU units, notifying clinicians, laboratory staff, public health doctors, nurses, surveillance scientists, microbiologists and administrative staff.

Report prepared by COVID-19 Epidemiology Team, HPSC

Technical Notes

1. Data Source

Data are based on statutory notifications and were extracted from Computerised Infectious Disease Reporting (CIDR) system at 09:13 on 29/03/2021. Data are provisional and subject to ongoing review, validation and update. As a result, figures in this report may differ from previously published figures.

2. Population data

Population data were taken from Census 2016. Data were aggregated into the following age groups for the analysis: 0-4 years, 5-12 years, 13-18 years, 19-24 years, 25-34 years, 35-44 years, 45-54 years, 55-64 years, 65-74 years, 75-84 years and ≥ 85 years.

3. Transmission classification

Transmission classification is based on country of infection as well as enhanced exposure data (international travel; close contact of a case) recorded in CIDR. Transmission is classified as 'unknown' due to incomplete data on CIDR.

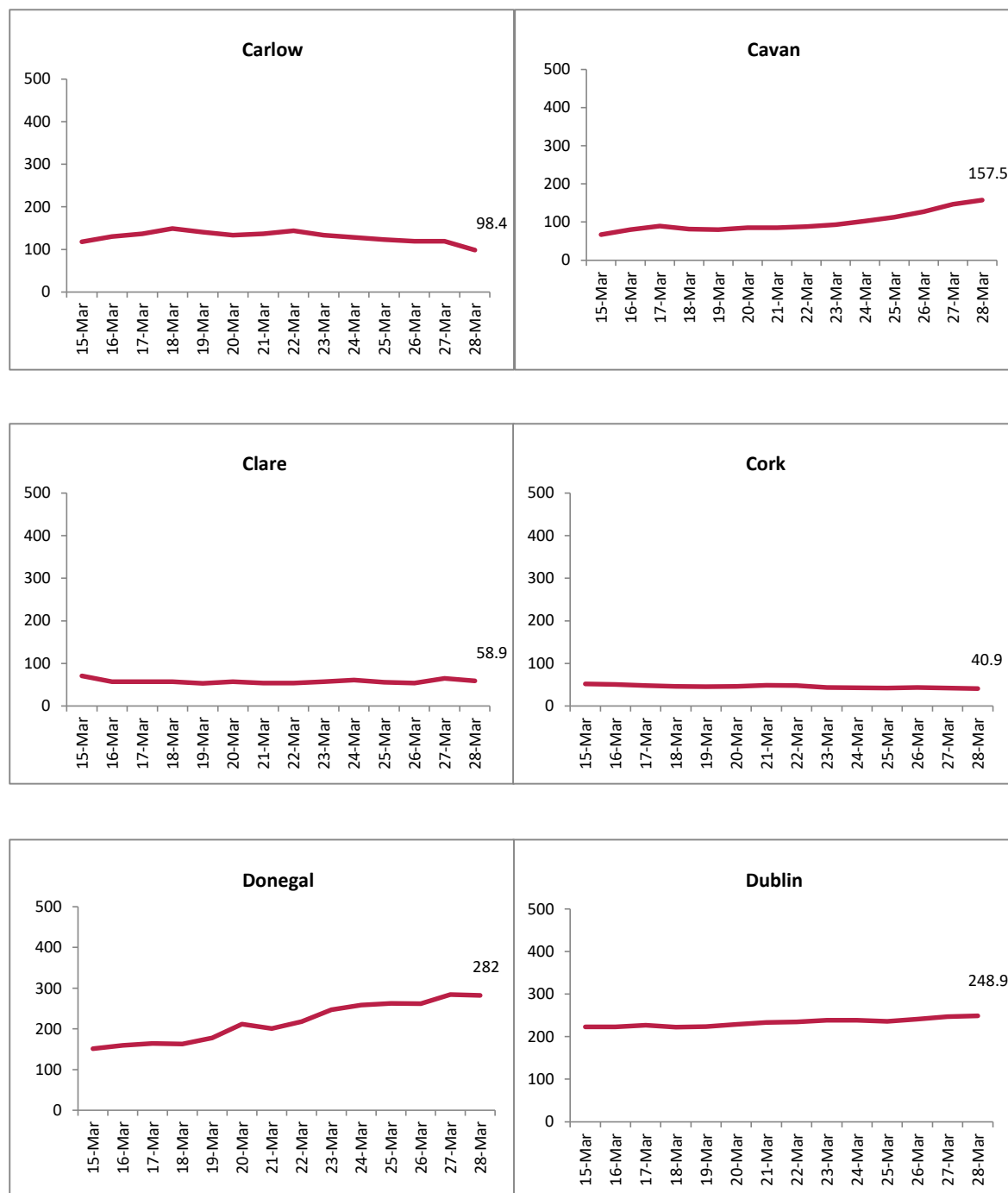
Travel related cases include cases who acquire COVID-19 infection outside of Ireland (imported cases) and cases who acquire COVID-19 infection directly from imported cases.

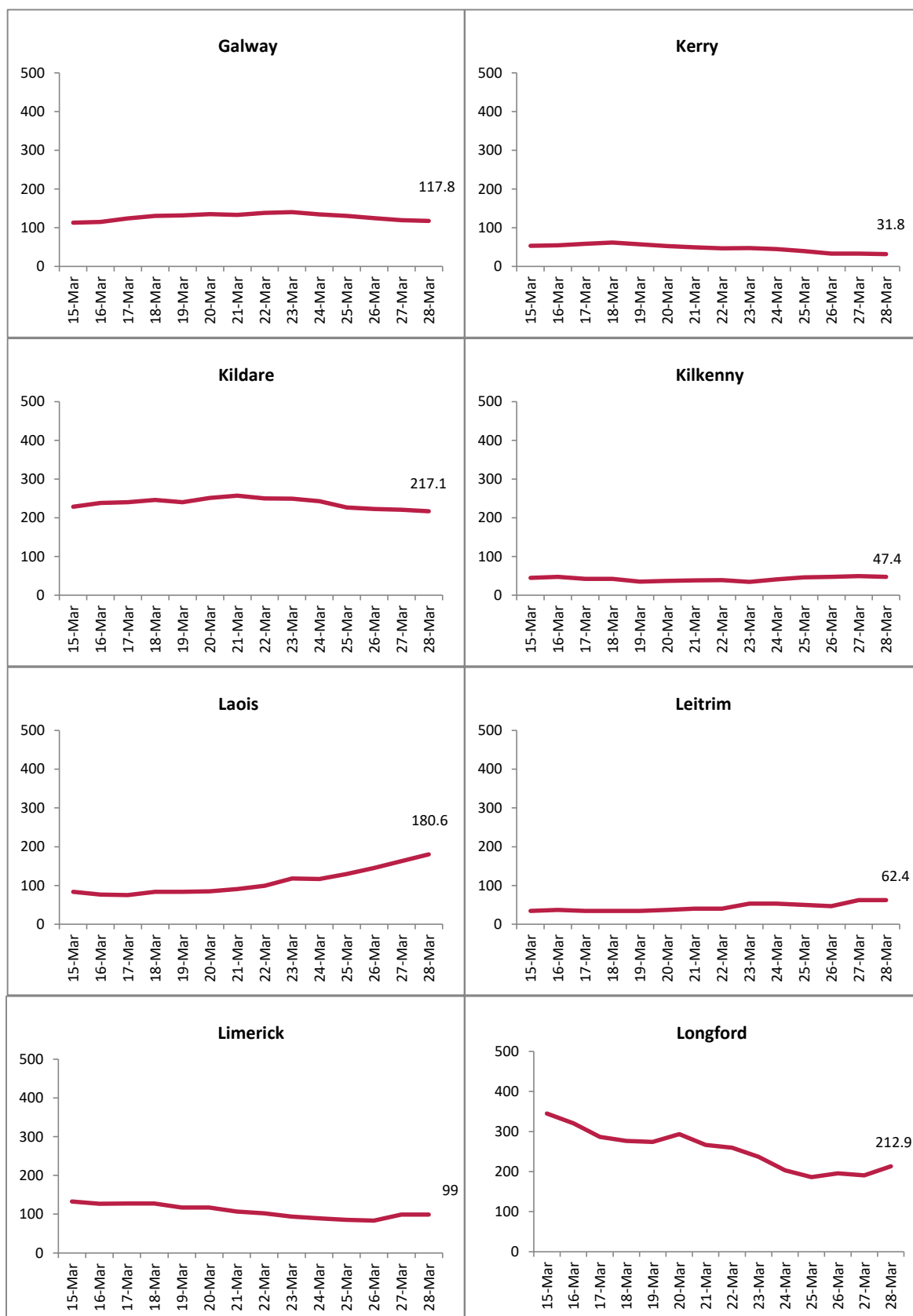
WHO definition of transmission classification is specified below:

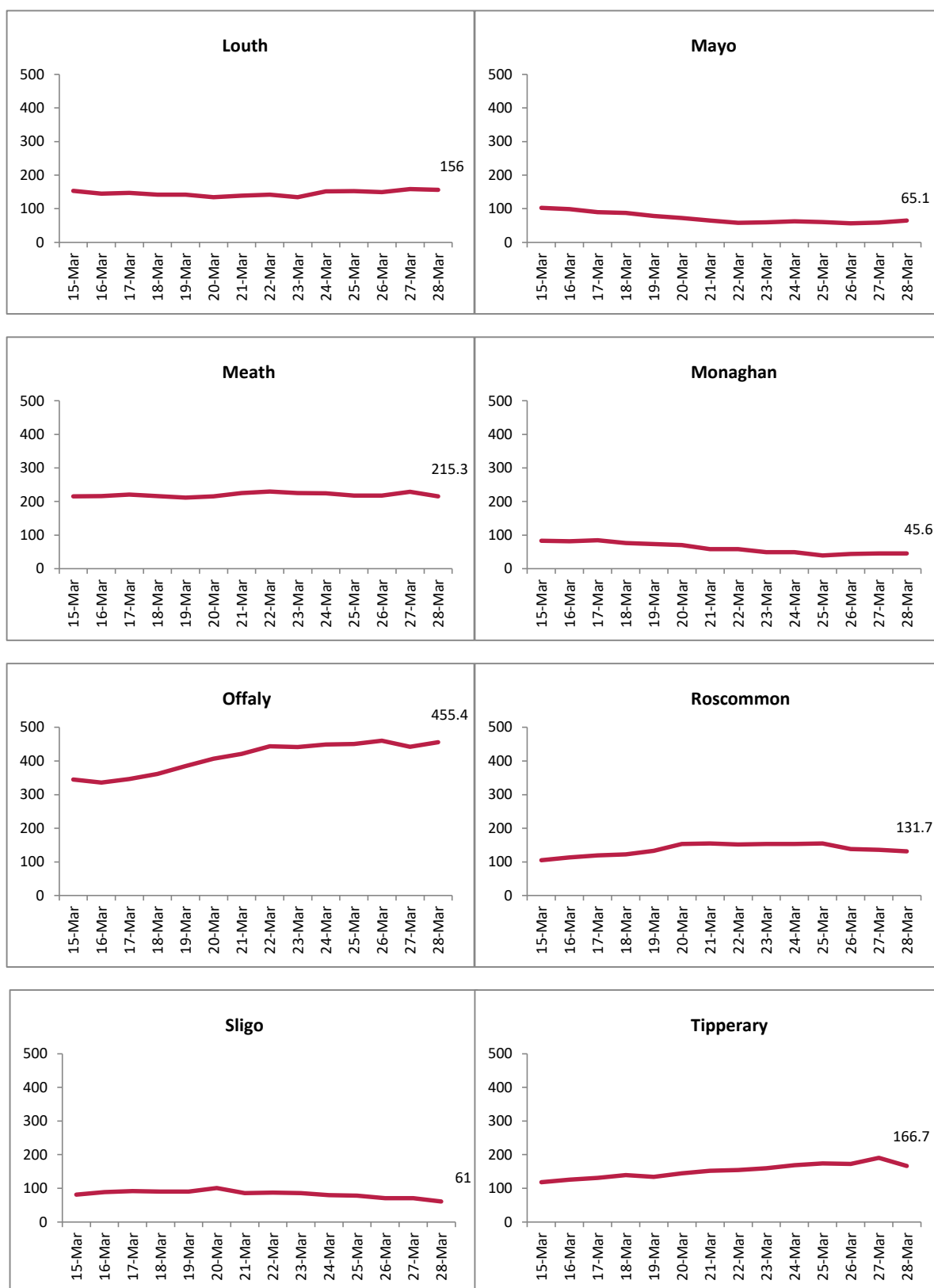
- Community transmission is evidenced by the inability to relate confirmed cases through chains of transmission for a large number of cases, or by increasing positive tests through routine screening of sentinel samples.
- Local transmission indicates locations where the source of infection is within the reporting location.
- Imported cases only indicates locations where all cases have been acquired outside the location of reporting.

Appendix 1

Figure A. 14 day cumulative incidence rates per 100,000 population of confirmed cases of COVID-19 by county (15/03/2021 to 28/03/2021)









Please be advised that the CCA data are being validated and the CCA graphs will be reintroduced once validation is complete.