



Epidemiology of COVID-19 in Ireland - 14 day report

Report prepared by HPSC on 28/03/2021

Summary characteristics of confirmed COVID-19 cases notified in Ireland from 14/03/2021 up to midnight 27/03/2021

	Number	Percent
Total number of confirmed cases	7,834	
National incidence of confirmed cases per 100,000 population	164.52	
Number of cases hospitalised*	360	4.6
Number of cases admitted to ICU*	16	0.2
Number of deaths among confirmed cases	18	0.23
Case fatality ratio (CFR, %)	0.23	
National incidence of confirmed deaths per 100,000 population	0.38	
Number of cases** associated with clusters	1,885	24.06
Number of imported cases	69	0.88
Number of cases in healthcare workers	202	2.58
Males	3,867	49.36
Females	3,954	50.47
M:F ratio	0.98	
Median age (years)	32	
Mean age (years)	32	
Age range (years)	0 - 99	

* The number of cases hospitalised and admitted to ICU relate only to events notified in the last 14 days and do not include cases notified prior to this and admitted to hospital or ICU in the last 14 days

**Cases may be associated with outbreaks notified outside the timeframe of this report
14/03/2021 - 27/03/2021

Note: Data were extracted from Computerised Infectious Disease Reporting (CIDR) system at 08:54 on 28/03/2021 and are provisional and subject to ongoing review, validation and update. As a result, figures in this report may differ from previously published figures.

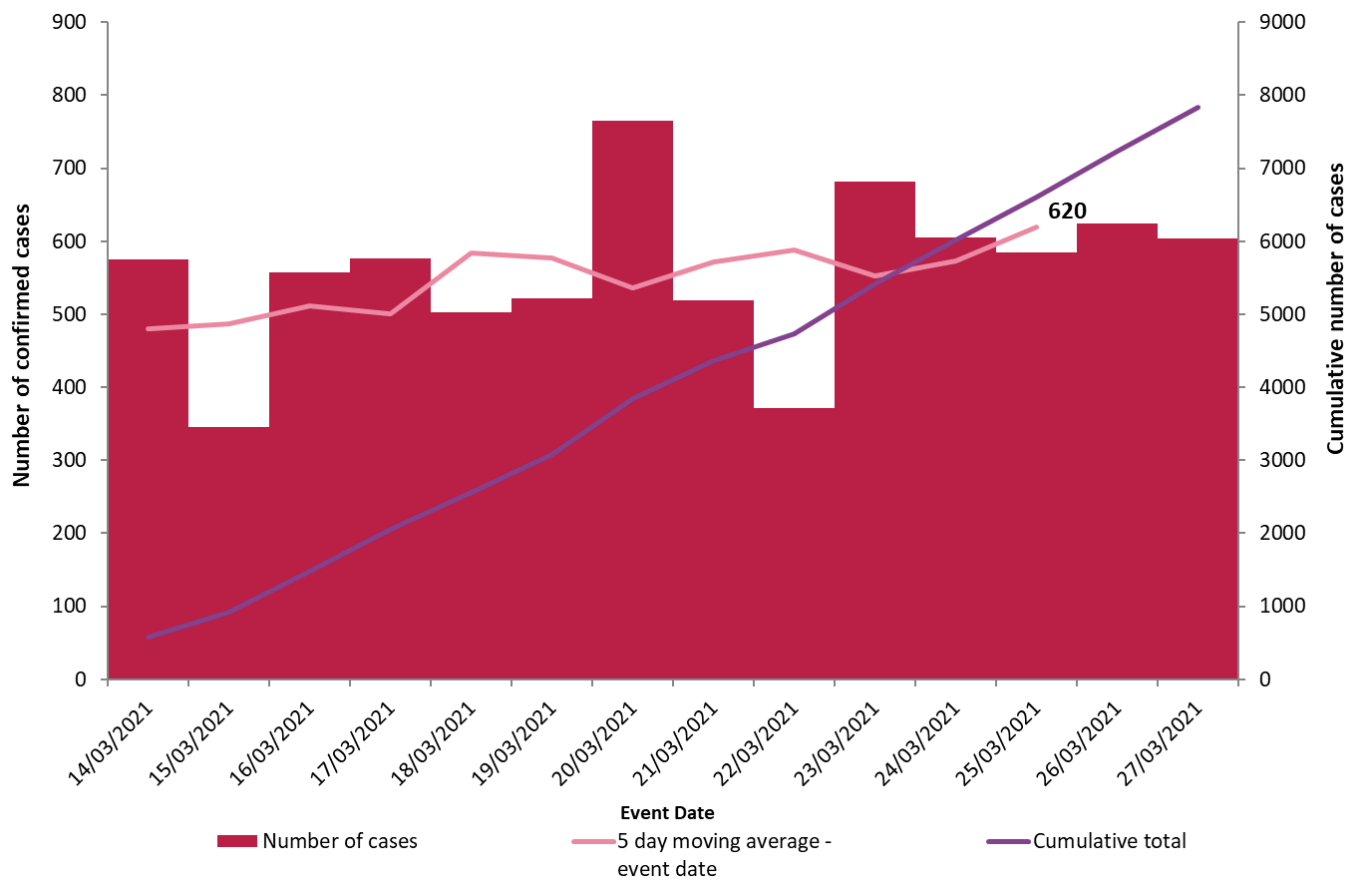


Figure 1. Daily number and cumulative number of confirmed cases of COVID-19, and 5-day moving average, by notification date (n=7,834)

Table 1: Characteristics of confirmed COVID-19 cases notified in Ireland from 14/03/2021 up to midnight on 27/03/202

Characteristic		Number of cases	Percent
Total number of confirmed cases		7,834	100
Sex	Male:Female ratio	0.98	
	Male	3,867	49.36
	Female	3,954	50.47
	Unknown	13	0.17
Age	Median age (years)	32	
	Mean age (years)	32	
	Age range (years)	0 - 99	
	0-4 yrs	721	9.2
	5-12 yrs	1,050	13.4
	13-18 yrs	623	7.95
	19-24 yrs	688	8.78
	25-34 yrs	1,282	16.36
	35-44 yrs	1,424	18.18
	45-54 yrs	870	11.11
	55-64 yrs	555	7.08
	65-74 yrs	337	4.3
	75-84 yrs	201	2.57
	85+ yrs	83	1.06
Symptom status at time of test*	Yes	4,446	56.75
	No	1,612	20.58
	Unknown	1,776	22.67

*Symptom status is recorded at the time of test and is not updated, therefore a proportion of the asymptomatic cases may subsequently develop symptoms however this will not be captured in the data.

Table 2: Number of confirmed COVID-19 cases by community healthcare organisation (CHO) notified in Ireland from 14/03/2021 to midnight 27/03/2021

CHO Area	Number of confirmed cases	Incidence per 100,000 population
CHO1	657	167.9
CHO2	475	104.8
CHO3	411	106.8
CHO4	279	40.4
CHO5	648	127.0
CHO6	604	157.6
CHO7	1,329	187.8
CHO8	1,375	222.0
CHO9	2,055	330.7
Total	7,834	164.5

Table 3: Number of confirmed COVID-19 cases by county notified in Ireland from 14/03/2021 to midnight 27/03/2021

County	Number of confirmed cases	Incidence per 100,000 population	5 day moving average of confirmed cases (21/03/2021-27/03/2021)
Offaly	346	443.8	29
Donegal	452	283.9	46
Dublin	3327	246.9	259
Meath	444	227.6	31
Kildare	490	220.2	42
Longford	78	190.8	6
Tipperary	300	188.0	20
Westmeath	165	185.9	17
Laois	138	162.9	15
Louth	204	158.3	17
Wexford	222	148.3	17
Cavan	112	147.0	12
Roscommon	88	136.3	6
Waterford	148	127.4	7
Wicklow	171	120.1	14
Galway	309	119.7	18
Carlow	68	119.4	1
Limerick	196	100.6	18
Sligo	46	70.2	1
Clare	76	64.0	6
Leitrim	20	62.4	2
Mayo	78	59.8	10
Kilkenny	49	49.4	4
Monaghan	28	45.6	2
Cork	230	42.4	18
Kerry	49	33.2	2
Total	7,834	164.5	620

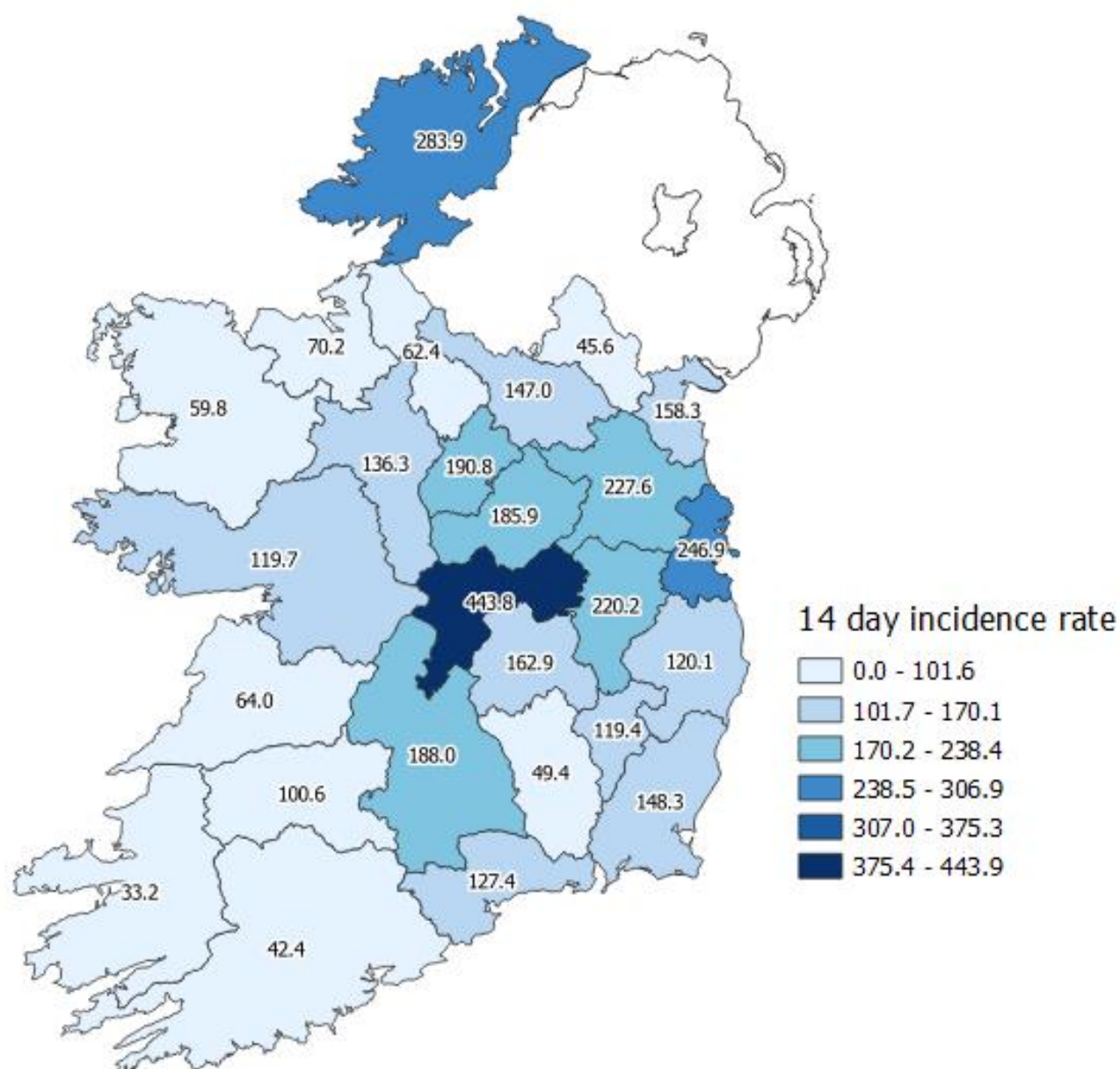


Figure 2: Cumulative incidence rates of confirmed COVID-19 cases per 100,000 population by county notified in Ireland between 14/03/2021 and 27/03/2021

Please do not directly compare county shades to previous maps. The categories listed will change as the number of cases change, which may result in changes to the map shading.

Table 4: Number and incidence of confirmed COVID-19 cases by Dublin Local Health Offices* (LHOs) notified in Ireland

Please be advised that the CCA data are currently being validated and this table will be reintroduced once validation is complete.

Note: Local health offices (LHOs) came into operation on 1st September 2005, replacing Community Care Areas (CCAs). LHO population denominators are used in this report rather than CCA population denominators. The LHO rates were calculated using Census 2016 LHO denominator data extracted from the HSE Health Atlas and are not a direct match to the corresponding CCAs

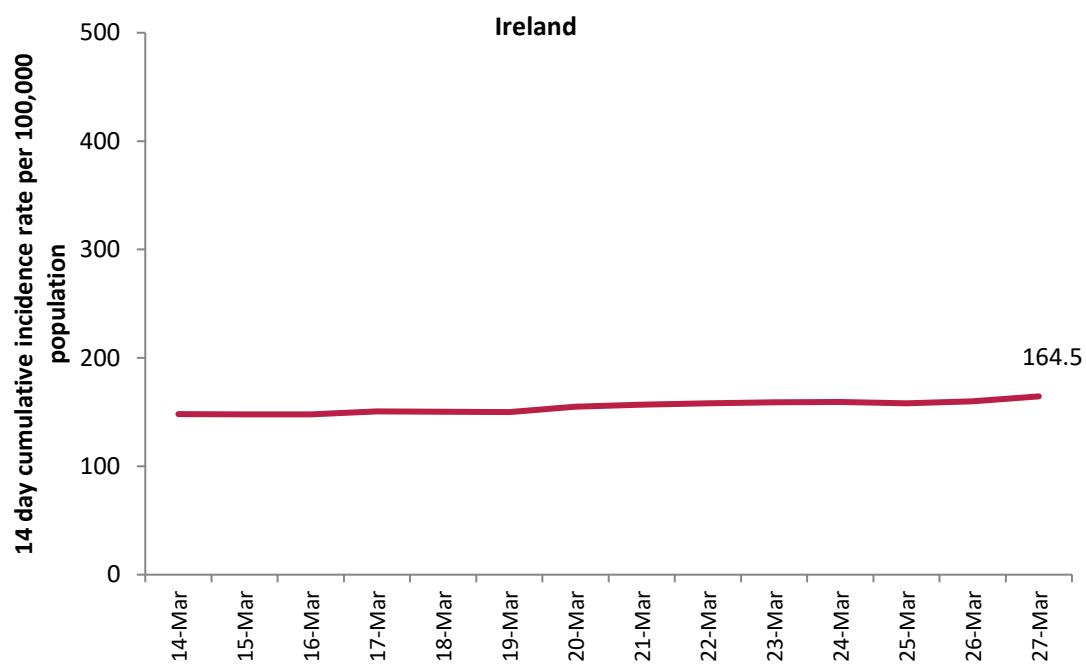


Figure 3: 14 day cumulative incidence rates per 100,000 population of confirmed cases of COVID-19 in Ireland* (14/03/2021 to 27/03/2021)

*14 day incidence rates per 100,000 populations of confirmed cases of COVID-19 for individual counties can be found in appendix 1 of this report

Table 5: Number of confirmed COVID-19 cases by most likely transmission source notified from 14/03/2021 to midnight 27/03/2021

Most likely transmission source	Number of cases	Percent
Travel related *	151	1.93%
Close contact with a known confirmed case	4,136	52.80%
Healthcare setting acquired: patient	125	1.60%
Healthcare setting acquired: staff	51	0.65%
Community transmission	1,455	18.57%
Under investigation	1,916	24.46%
Total	7,834	100.00%

*Travel related cases include cases who acquire COVID-19 infection outside of Ireland (imported cases) and cases who acquire COVID-19 infection directly from imported cases

Table 6: Cumulative number of confirmed cases of COVID-19 notified in Ireland from 14/03/2021 to midnight 27/03/2021 by age group, hospitalisation and ICU admission*

Age Group (years)	Number of cases (n)	Cases hospitalised (n)	Cases hospitalised (%)	Cases admitted to ICU (n)	Cases admitted to ICU (%)
0-4 yrs	721	9	2.50	<5	
5-12 yrs	1,050	8	2.22	0	0
13-18 yrs	623	11	3.06	0	0
19-24 yrs	688	9	2.50	0	0
25-34 yrs	1,282	22	6.11	<5	
35-44 yrs	1,424	41	11.39	<5	
45-54 yrs	870	29	8.06	<5	
55-64 yrs	555	47	13.06	<5	
65-74 yrs	337	75	20.83	5	31.25
75-84 yrs	201	74	20.56	<5	
85+ yrs	83	35	9.72	0	0
Total	7,834	360	100	16	100

* The number of cases hospitalised and admitted to ICU relate only to events notified in the last 14 days and do not include cases notified prior to this and admitted to hospital or ICU in the last 14 days

Deaths among COVID-19 cases

Table 7: Summary of deaths in all COVID-19 cases notified in Ireland from 14/03/2021 up to midnight 27/03/2021

	Number	Percent
Total number of deaths	19	
Confirmed	18	94.7
Probable	1	5.3
Total number of cases hospitalised	15	78.9
Total number of male cases	11	57.9
M:F ratio	1.4	
Median age (years)	78	
Mean age (years)	76	
Age range (years)	49 - 93	

Table 8: Number of deaths in all COVID-19 cases by sex and age group notified in Ireland from 14/03/2021 up to midnight 27/03/2021

Age group (years)	Female	Male	Total	Percent
<65 yrs	*	*	3	15.8
65-74 yrs	*	*	4	21.1
75-84 yrs	*	6	10	52.6
85+ yrs	*	*	2	10.5
Total	8	11	19	100
Percent	42.1	57.9		

*One or both values <5

Acknowledgements

Sincere thanks are extended to all those who are participating in the collection of data and reporting of data used in these reports. This includes the HSE COVID-19 Contact Management Programme (CMP), staff in ICU units, notifying clinicians, laboratory staff, public health doctors, nurses, surveillance scientists, microbiologists and administrative staff.

Report prepared by COVID-19 Epidemiology Team, HPSC

Technical Notes

1. Data Source

Data are based on statutory notifications and were extracted from Computerised Infectious Disease Reporting (CIDR) system. Data are provisional and subject to ongoing review, validation and update. As a result, figures in this report may differ from previously published figures.

2. Population data

Population data were taken from Census 2016. Data were aggregated into the following age groups for the analysis: 0-4 years, 5-12 years, 13-18 years, 19-24 years, 25-34 years, 35-44 years, 45-54 years, 55-64 years, 65-74 years, 75-84 years and ≥ 85 years.

3. Transmission classification

Transmission classification is based on country of infection as well as enhanced exposure data (international travel; close contact of a case) recorded in CIDR. Transmission is classified as 'unknown' due to incomplete data on CIDR.

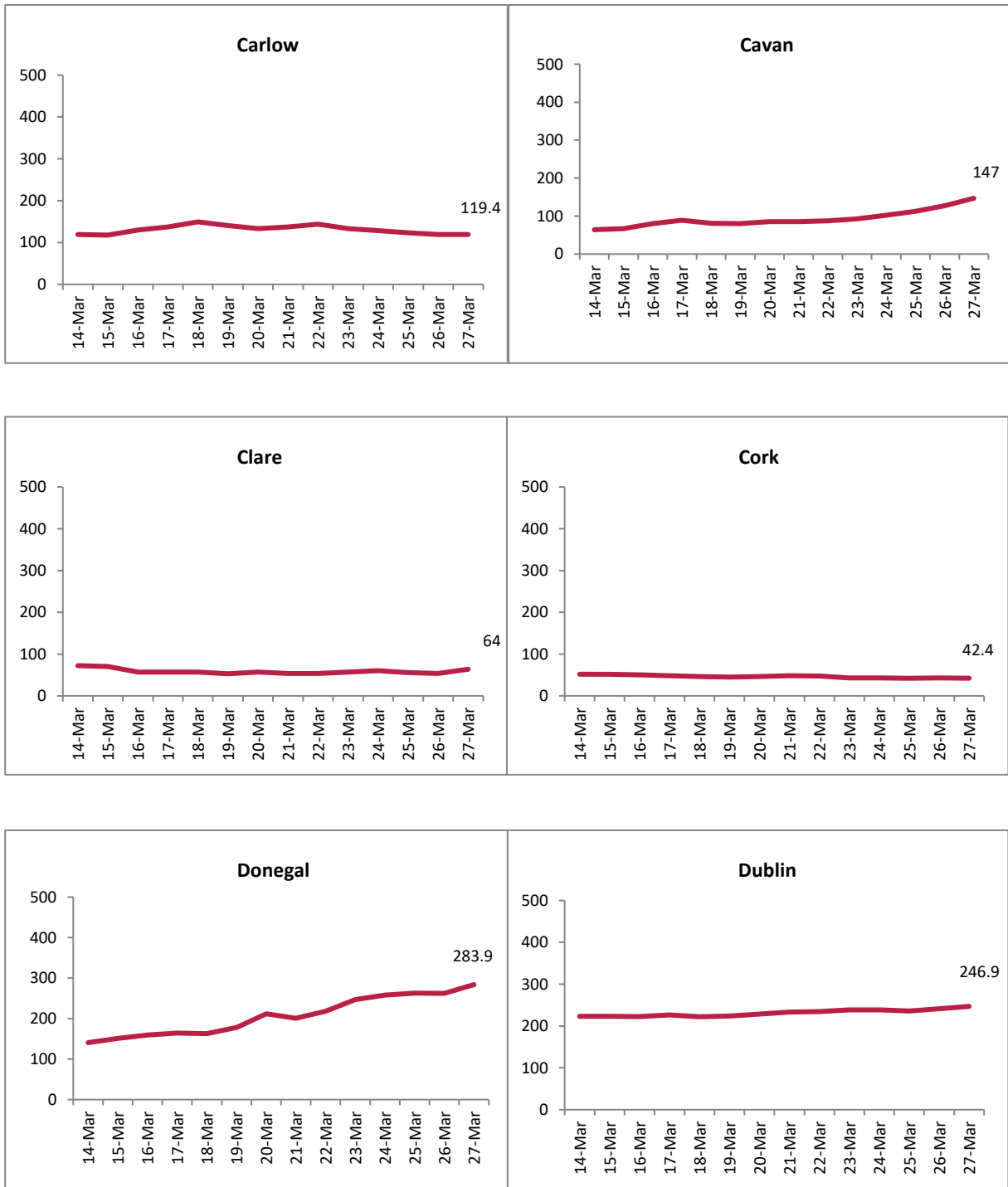
Travel related cases include cases who acquire COVID-19 infection outside of Ireland (imported cases) and cases who acquire COVID-19 infection directly from imported cases.

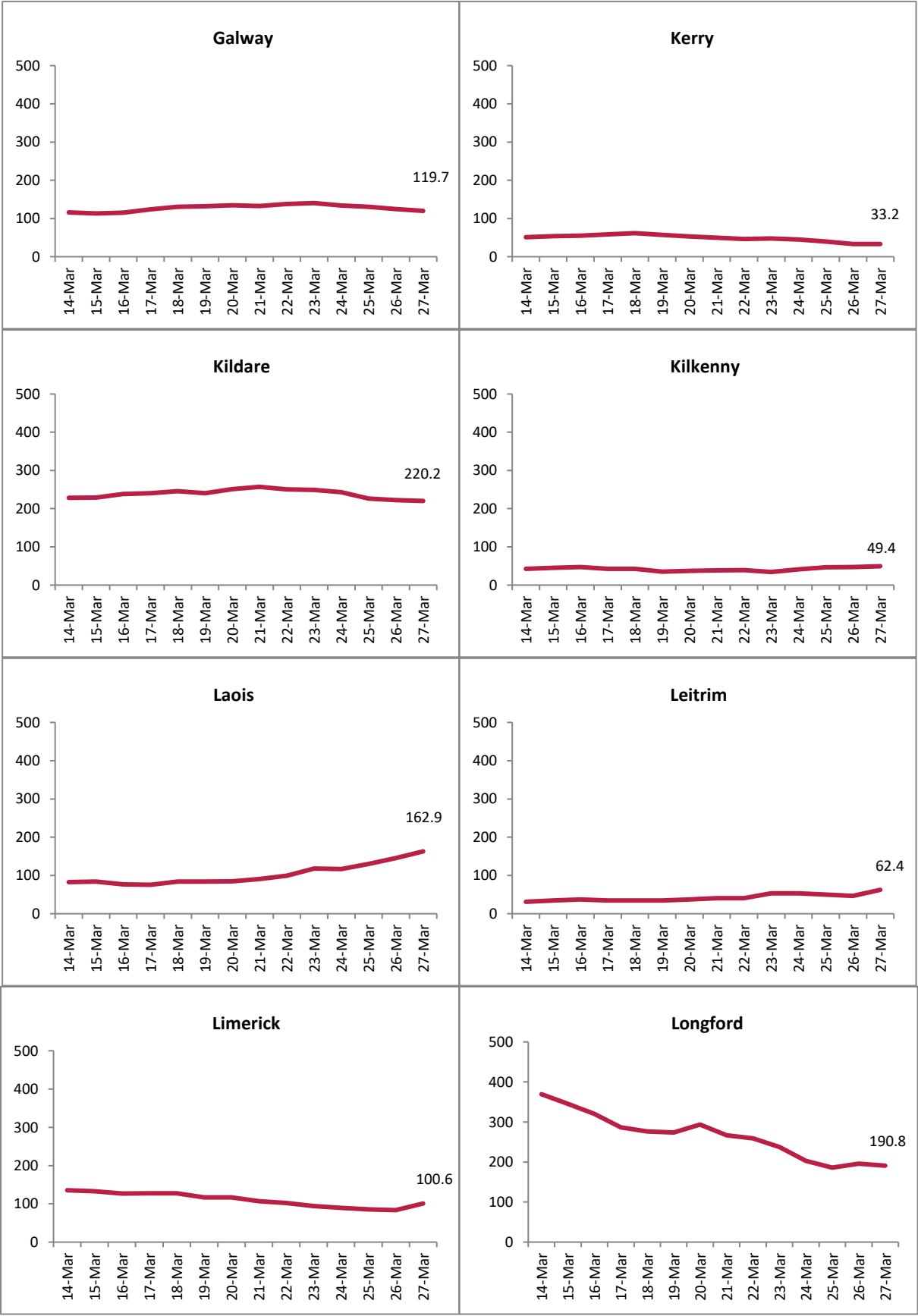
WHO definition of transmission classification is specified below:

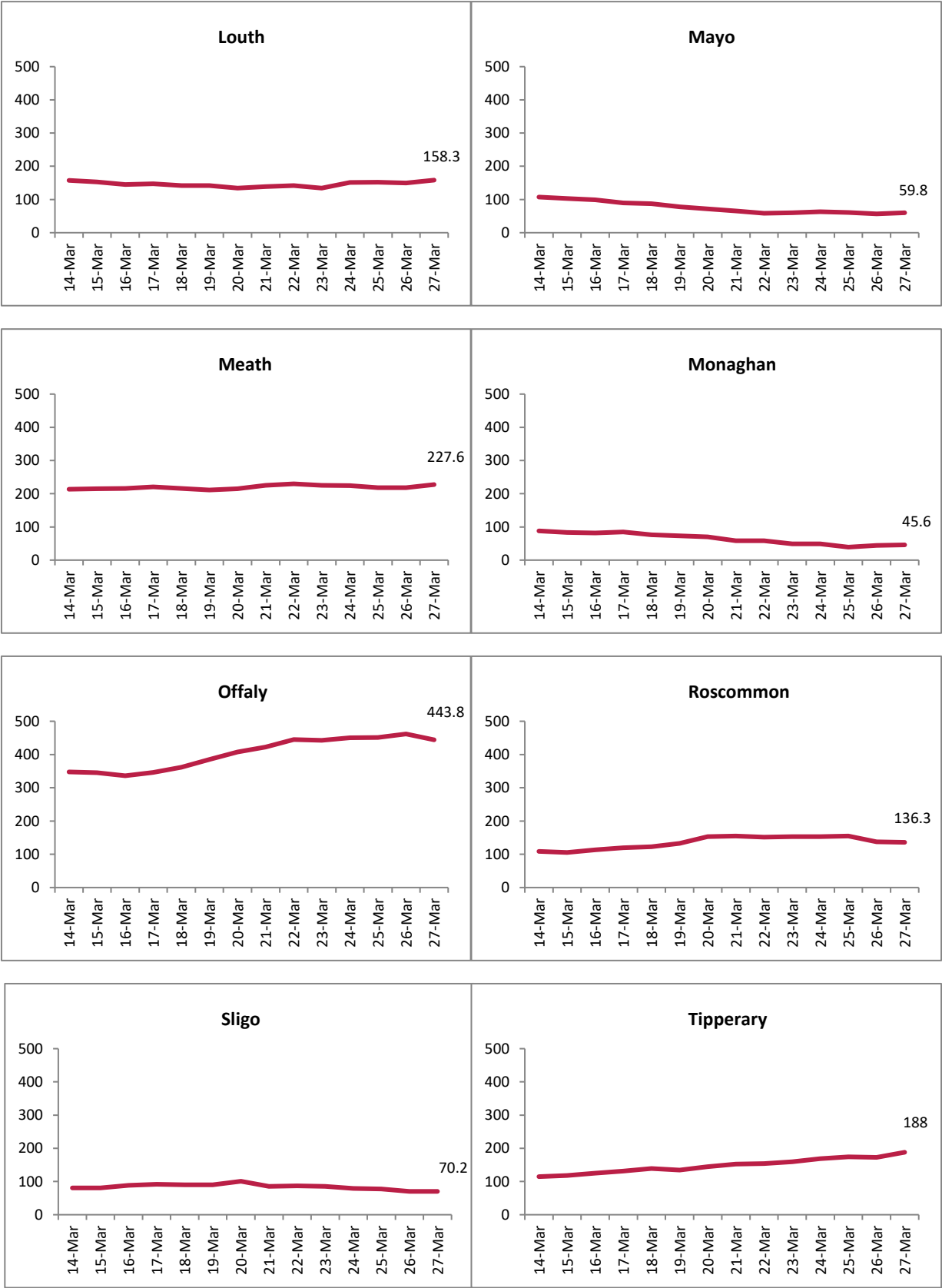
- Community transmission is evidenced by the inability to relate confirmed cases through chains of transmission for a large number of cases, or by increasing positive tests through routine screening of sentinel samples.
- Local transmission indicates locations where the source of infection is within the reporting location.
- Imported cases only indicates locations where all cases have been acquired outside the location of reporting.

Appendix 1

Figure A. 14 day cumulative incidence rates per 100,000 population of confirmed cases of COVID-19 by county (14/03/2021 to 27/03/2021)









Please be advised that the CCA data are being validated and the CCA graphs (Figure B) will be reintroduced once validation is complete