



Epidemiology of COVID-19 in Ireland - 14 day report

Report prepared by HPSC on 27/03/2021

Summary characteristics of confirmed COVID-19 cases notified in Ireland from 13/03/2021 up to midnight 26/03/2021

	Number	Percent
Total number of confirmed cases	7,613	
National incidence of confirmed cases per 100,000 population	159.87	
Number of cases hospitalised*	360	4.73
Number of cases admitted to ICU*	17	0.22
Number of deaths among confirmed cases	14	0.18
Case fatality ratio (CFR, %)	0.18	
National incidence of confirmed deaths per 100,000 population	0.29	
Number of cases** associated with clusters	2,005	26.34
Number of imported cases	75	0.99
Number of cases in healthcare workers	208	2.73
% HCW where HCW status known (n=5,899)		3.53
Males	3,763	49.43
Females	3,842	50.47
M:F ratio	0.98	
Median age (years)	32	
Mean age (years)	32	
Age range (years)	0 - 99	

* The number of cases hospitalised and admitted to ICU relate only to events notified in the last 14 days and do not include cases notified prior to this and admitted to hospital or ICU in the last 14 days

**Cases may be associated with outbreaks notified outside the timeframe of this report
13/03/2021 - 26/03/2021

Note: Data were extracted from Computerised Infectious Disease Reporting (CIDR) system at 08:45 on 27/03/2021 and are provisional and subject to ongoing review, validation and update. As a result, figures in this report may differ from previously published figures.

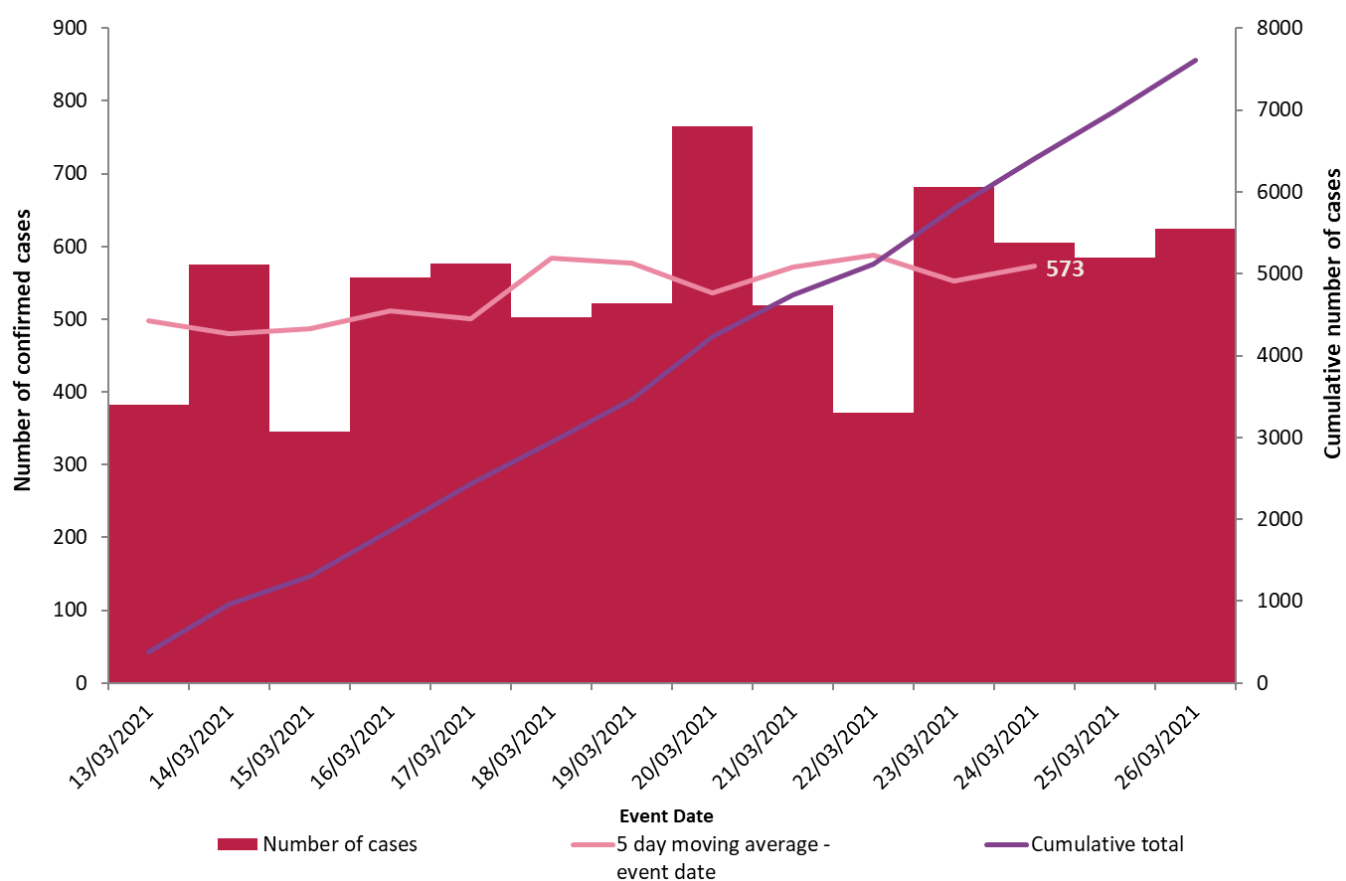


Figure 1. Daily number and cumulative number of confirmed cases of COVID-19, and 5-day moving average, by notification date (n=7,613)

Table 1: Age and sex of confirmed COVID-19 cases notified in Ireland from 13/03/2021 up to midnight on 26/03/2021

Characteristic		Number of cases	Percent
Total number of confirmed cases		7,613	100
Sex	Male:Female ratio	0.98	
	Male	3,763	49.43
	Female	3,842	50.47
	Unknown	8	0.11
Age	Median age (years)	32	
	Mean age (years)	32	
	Age range (years)	0 - 99	
	0-4 yrs	678	8.91
	5-12 yrs	995	13.07
	13-18 yrs	589	7.74
	19-24 yrs	685	9
	25-34 yrs	1,263	16.59
	35-44 yrs	1,397	18.35
	45-54 yrs	847	11.13
	55-64 yrs	552	7.25
	65-74 yrs	329	4.32
	75-84 yrs	199	2.61
	85+ yrs	79	1.04
	Unknown		

Table 2: Characteristics of confirmed COVID-19 cases notified in Ireland from 13/03/2021 up to midnight on 26/03/2021

Characteristic		Number of cases	Percent	Percent where known
Total number of cases		7,613	100	
Symptom status at time of test*	Yes	4,387	57.63	73.25
	No	1,602	21.04	26.75
	Unknown	1,624	21.33	
	Total cases where known	5,989		
Healthcare worker	Yes	208	2.73	3.53
	No	5,691	74.75	96.47
	Unknown	1,714	22.51	
	Total cases where known	5,899		

*Symptom status is recorded at the time of test and is not updated, therefore a proportion of the asymptomatic cases may subsequently develop symptoms however this will not be captured in the data.

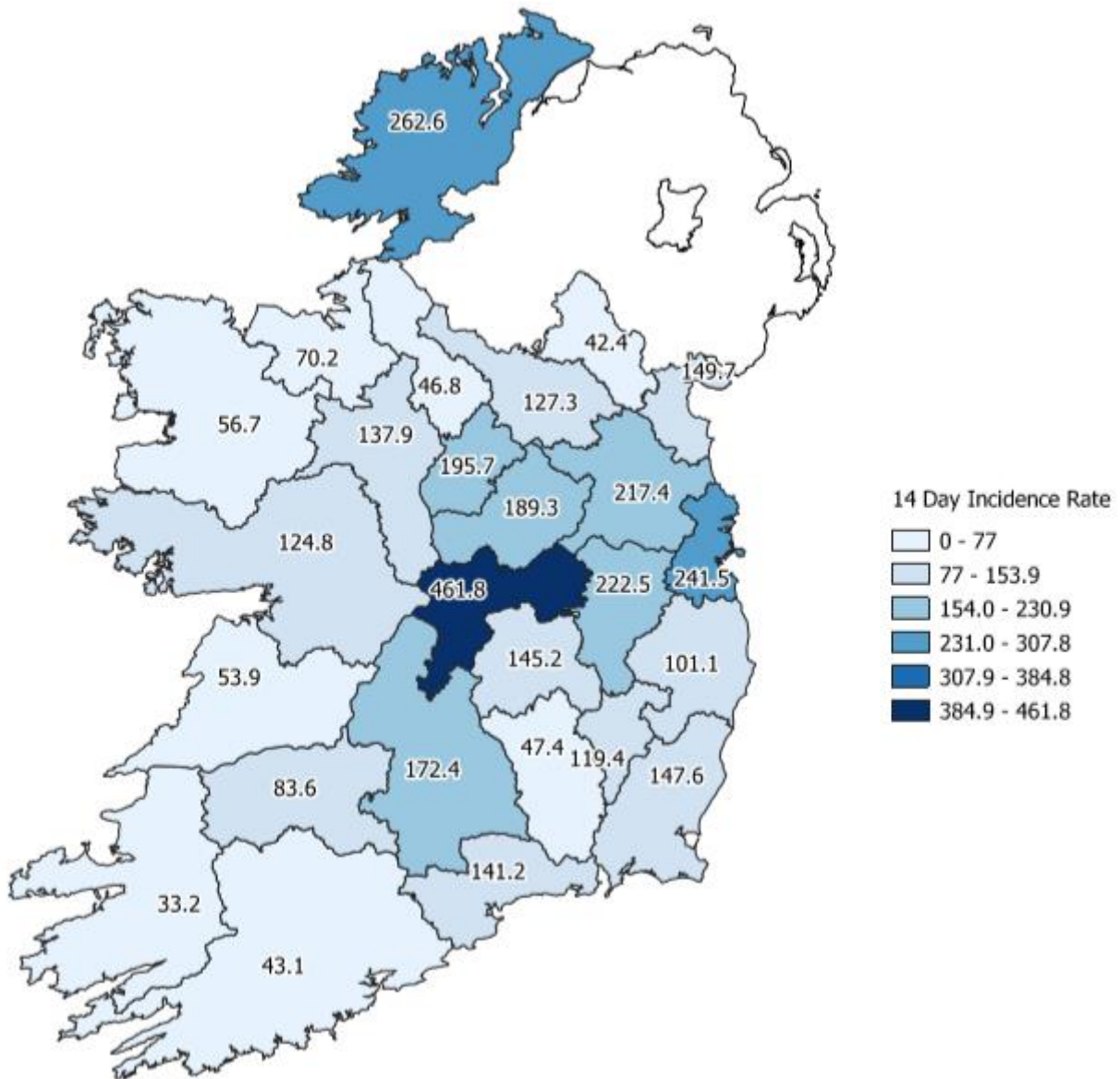


Figure 2: Cumulative incidence rates of confirmed COVID-19 cases per 100,000 population by county notified in Ireland between 13/03/2021 and 26/03/2021

Please do not directly compare county shades to previous maps. The categories listed will change as the number of cases change, which may result in changes to the map shading.

Table 2: Number of confirmed COVID-19 cases by community healthcare organisation (CHO) notified in Ireland from 13/03/2021 to midnight 26/03/2021

CHO Area	Number of confirmed cases	Incidence per 100,000 population
CHO1	602	153.9
CHO2	485	107.0
CHO3	348	90.4
CHO4	283	41.0
CHO5	654	128.2
CHO6	569	148.5
CHO7	1,292	182.6
CHO8	1,348	217.7
CHO9	2,031	326.8
Total	7,613	159.9

Table 3: Number of confirmed COVID-19 cases by county notified in Ireland from 13/03/2021 to midnight 26/03/2021

County	Number of confirmed cases	Incidence per 100,000 population	5 day moving average of confirmed cases (22/03/2021-26/03/2021)
Offaly	360	461.8	30
Donegal	418	262.6	42
Dublin	3254	241.5	245
Kildare	495	222.5	37
Meath	424	217.4	30
Longford	80	195.7	5
Westmeath	168	189.3	17
Tipperary	275	172.4	17
Louth	193	149.7	17
Wexford	221	147.6	14
Laois	123	145.2	13
Waterford	164	141.2	8
Roscommon	89	137.9	5
Cavan	97	127.3	9
Galway	322	124.8	19
Carlow	68	119.4	2
Wicklow	144	101.1	9
Limerick	163	83.6	13
Sligo	46	70.2	2
Mayo	74	56.7	9
Clare	64	53.9	4
Kilkenny	47	47.4	4
Leitrim	15	46.8	1
Cork	234	43.1	17
Monaghan	26	42.4	2
Kerry	49	33.2	2
Total	7,613	159.9	573

Table 4: Number and incidence of confirmed COVID-19 cases by Dublin Local Health Offices* (LHOs) notified in Ireland

Please be advised that the CCA data are currently being validated and this table will be reintroduced once validation is complete.

Note: Local health offices (LHOs) came into operation on 1st September 2005, replacing Community Care Areas (CCAs). LHO population denominators are used in this report rather than CCA population denominators. The LHO rates were calculated using Census 2016 LHO denominator data extracted from the HSE Health Atlas and are not a direct match to the corresponding CCAs

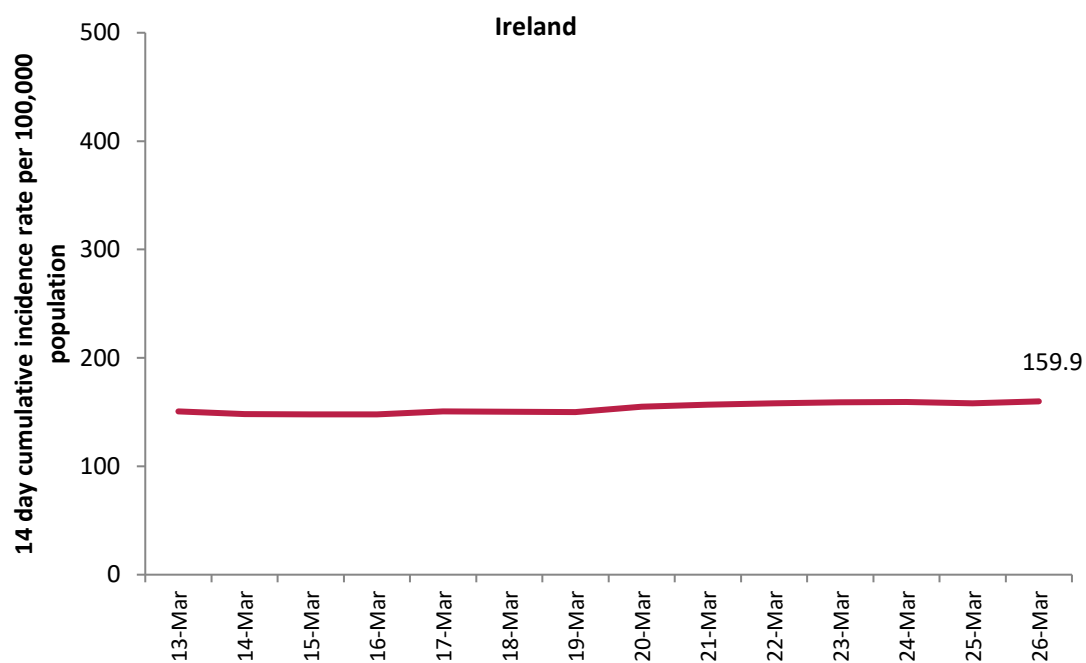


Figure 3: 14 day cumulative incidence rates per 100,000 population of confirmed cases of COVID-19 in Ireland* (13/03/2021 to 26/03/2021)

*14 day incidence rates per 100,000 populations of confirmed cases of COVID-19 for individual counties can be found in appendix 5 of this report

Deaths among COVID-19 cases

Table 11: Summary of deaths in all COVID-19 cases notified in Ireland from 13/03/2021 up to midnight 26/03/2021

	Number	Percent
Total number of deaths	15	
Confirmed	14	93.33
Probable	1	6.67
Total number of cases hospitalised	11	73.33
Total number of male cases	9	60
M:F ratio	1.5	
Median age (years)	78	
Mean age (years)	74	
Age range (years)	49 - 86	

Acknowledgements

Sincere thanks are extended to all those who are participating in the collection of data and reporting of data used in these reports. This includes the HSE COVID-19 Contact Management Programme (CMP), staff in ICU units, notifying clinicians, laboratory staff, public health doctors, nurses, surveillance scientists, microbiologists and administrative staff.

Report prepared by COVID-19 Epidemiology Team, HPSC

Technical Notes

1. Data Source

Data are based on statutory notifications and were extracted from Computerised Infectious Disease Reporting (CIDR) system at 08:45 on 3/27/21. Data are provisional and subject to ongoing review, validation and update. As a result, figures in this report may differ from previously published figures.

2. Population data

Population data were taken from Census 2016. Data were aggregated into the following age groups for the analysis: 0-4 years, 5-12 years, 13-18 years, 19-24 years, 25-34 years, 35-44 years, 45-54 years, 55-64 years, 65-74 years, 75-84 years and ≥ 85 years.

3. Transmission classification

Transmission classification is based on country of infection as well as enhanced exposure data (international travel; close contact of a case) recorded in CIDR. Transmission is classified as 'unknown' due to incomplete data on CIDR.

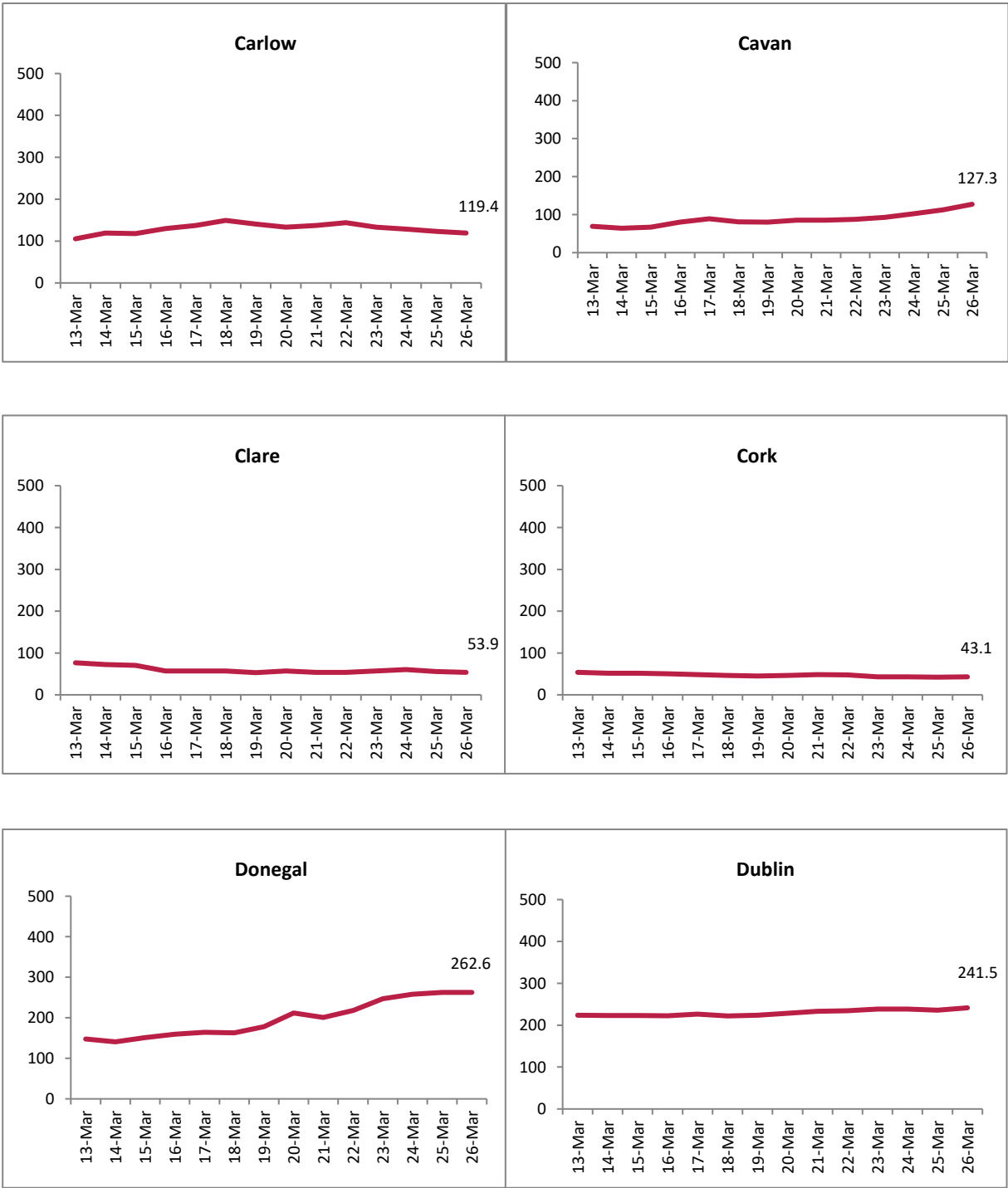
Travel related cases include cases who acquire COVID-19 infection outside of Ireland (imported cases) and cases who acquire COVID-19 infection directly from imported cases.

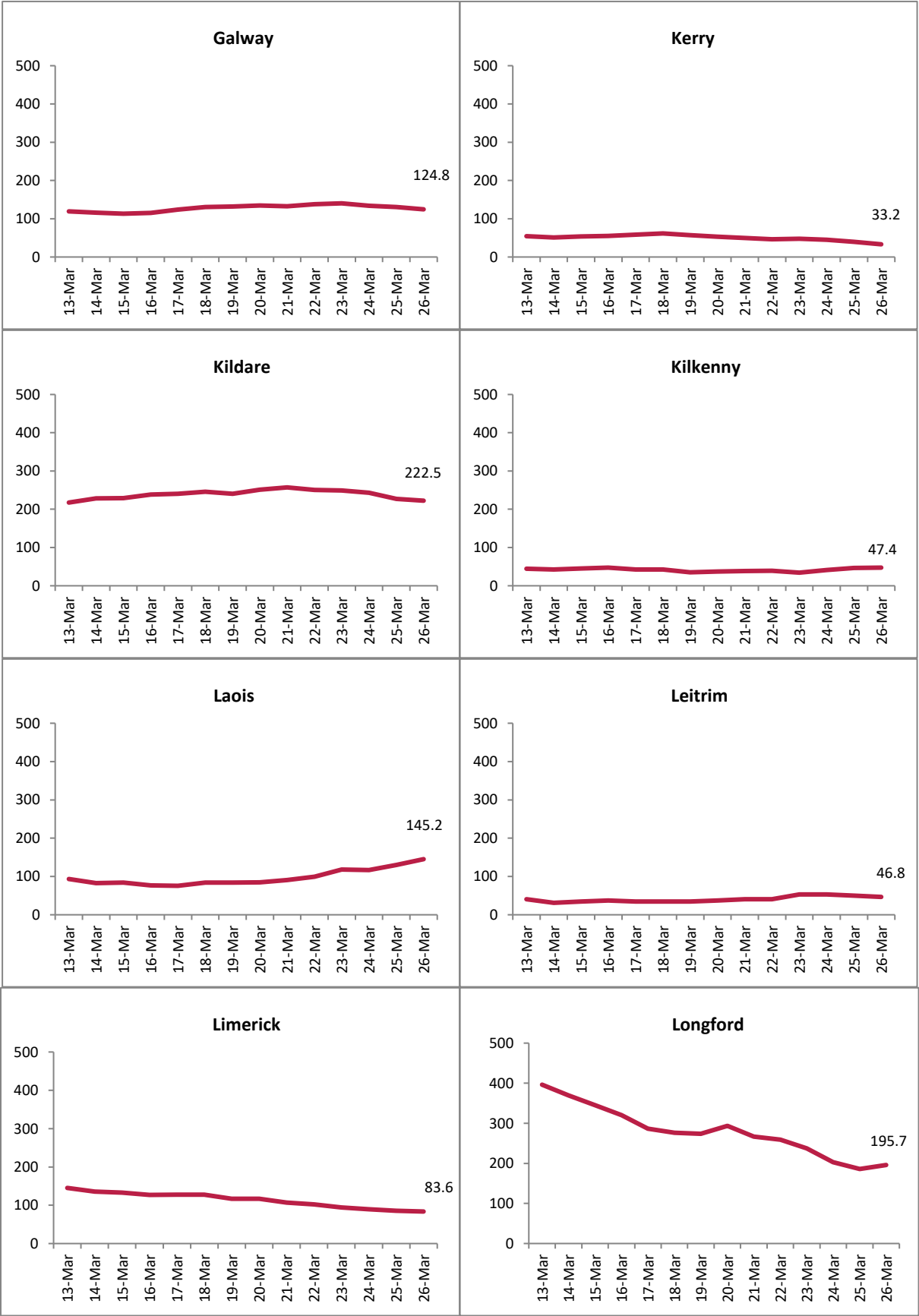
WHO definition of transmission classification is specified below:

- Community transmission is evidenced by the inability to relate confirmed cases through chains of transmission for a large number of cases, or by increasing positive tests through routine screening of sentinel samples.
- Local transmission indicates locations where the source of infection is within the reporting location.
- Imported cases only indicates locations where all cases have been acquired outside the location of reporting.

Appendix 1

Figure A. 14 day cumulative incidence rates per 100,000 population of confirmed cases of COVID-19 by county (13/03/2021 to 26/03/2021)









Please be advised that the CCA data are being validated and the CCA graphs (Figure B) will be reintroduced once validation is complete.