



Epidemiology of COVID-19 in Ireland - 14 day report

Report prepared by HPSC on 26/03/2021

Summary characteristics of confirmed COVID-19 cases notified in Ireland from 12/03/2021 up to midnight 25/03/2021

	Number	Percent
Total number of confirmed cases	7,530	
National incidence of confirmed cases per 100,000 population	158.13	
Number of cases hospitalised*	362	4.81
Number of cases admitted to ICU*	20	0.27
Number of deaths among confirmed cases	13	0.17
Case fatality ratio (CFR, %)	0.17	
National incidence of confirmed deaths per 100,000 population	0.27	
Number of cases** associated with clusters	1,994	26.48
Number of imported cases	83	1.1
Number of cases in healthcare workers	214	2.84
% HCW where HCW status known (n=5,814)		3.68
Males	3,722	49.43
Females	3,801	50.48
M:F ratio	0.98	
Median age (years)	32	
Mean age (years)	32	
Age range (years)	0 - 99	

* The number of cases hospitalised and admitted to ICU relate only to events notified in the last 14 days and do not include cases notified prior to this and admitted to hospital or ICU in the last 14 days

**Cases may be associated with outbreaks notified outside the timeframe of this report
12/03/2021 - 25/03/2021

Note: Data were extracted from Computerised Infectious Disease Reporting (CIDR) system at 07:50 on 26/03/2021 and are provisional and subject to ongoing review, validation and update. As a result, figures in this report may differ from previously published figures.

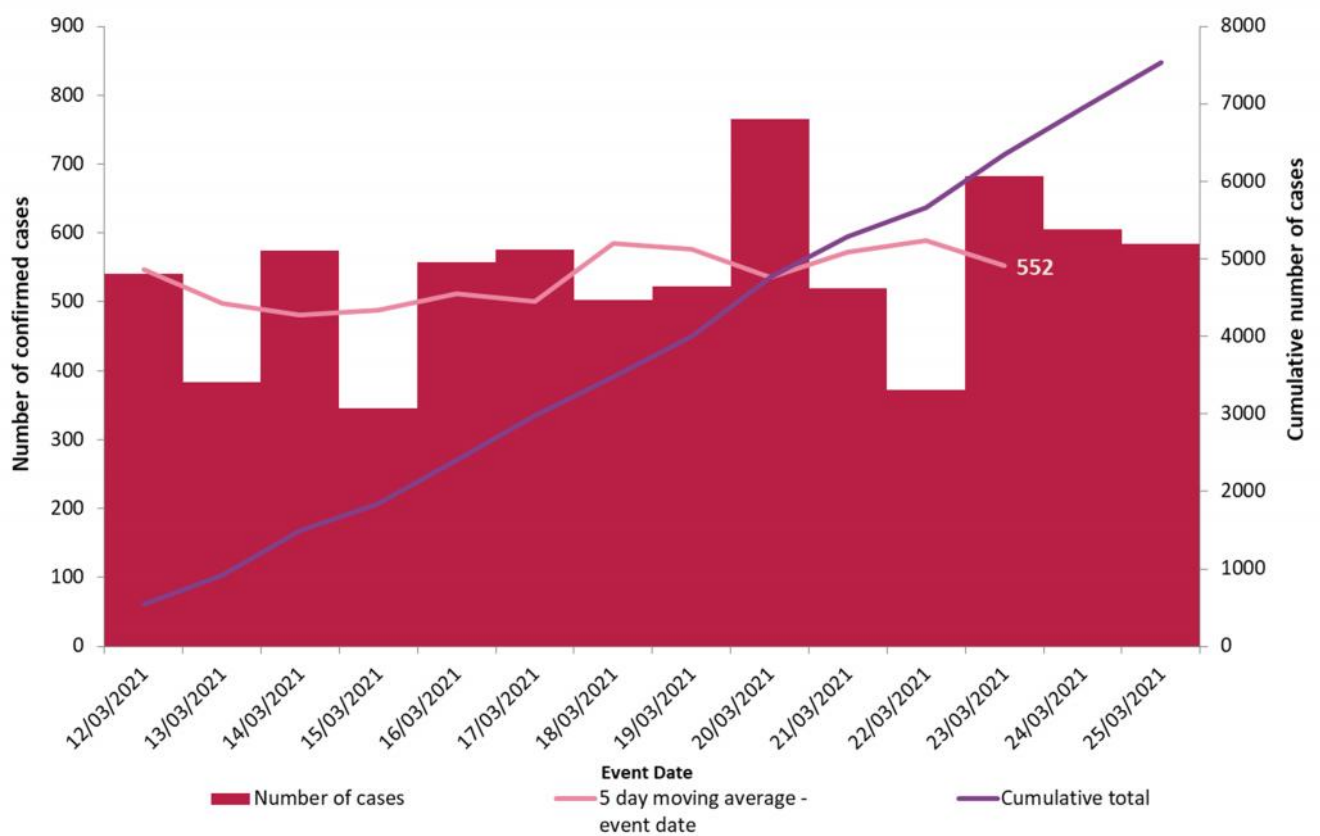


Figure 1. Daily number and cumulative number of confirmed cases of COVID-19, and 5-day moving average, by notification date (n=7,530)

Table 1: Age and sex of confirmed COVID-19 cases notified in Ireland from 12/03/2021 up to midnight on 25/03/2021

Characteristic		Number of cases	Percent
Total number of confirmed cases		7,530	100
Sex	Male:Female ratio	0.98	
	Male	3,722	49.43
	Female	3,801	50.48
	Unknown	7	0.09
Age	Median age (years)	32	
	Mean age (years)	32	
	Age range (years)	0 - 99	
	0-4 yrs	646	8.58
	5-12 yrs	991	13.16
	13-18 yrs	588	7.81
	19-24 yrs	711	9.44
	25-34 yrs	1,242	16.49
	35-44 yrs	1,356	18.01
	45-54 yrs	815	10.82
	55-64 yrs	553	7.34
	65-74 yrs	337	4.48
	75-84 yrs	208	2.76
	85+ yrs	83	1.1
	Unknown		

Table 2: Characteristics of confirmed COVID-19 cases notified in Ireland from 12/03/2021 up to midnight on 25/03/2021

Characteristic		Number of cases	Percent	Percent where known
Total number of cases		7,530	100	
Symptom status at time of test*	Yes	4,299	57.09	73.05
	No	1,586	21.06	26.95
	Unknown	1,645	21.85	
	Total cases where known	5,885		
Healthcare worker	Yes	214	2.84	3.68
	No	5,600	74.37	96.32
	Unknown	1,716	22.79	
	Total cases where known	5,814		

*Symptom status is recorded at the time of test and is not updated, therefore a proportion of the asymptomatic cases may subsequently develop symptoms however this will not be captured in the data.

Table 2: Number of confirmed COVID-19 cases by community healthcare organisation (CHO) notified in Ireland from 12/03/2021 to midnight 25/03/2021

CHO Area	Number of confirmed cases	Incidence per 100,000 population
CHO1	596	152.3
CHO2	513	113.2
CHO3	358	93.0
CHO4	288	41.7
CHO5	651	127.6
CHO6	550	143.5
CHO7	1,248	176.3
CHO8	1,313	212.0
CHO9	2,013	323.9
Total	7,530	158.1

Table 3: Number of confirmed COVID-19 cases by county notified in Ireland from 12/03/2021 to midnight 25/03/2021

County	Number of confirmed cases	Incidence per 100,000 population	5 day moving average of confirmed cases (21/03/2021-25/03/2021)
Offaly	352	451.5	30
Donegal	418	262.6	37
Dublin	3,192	236.9	234
Kildare	505	227.0	35
Meath	424	217.4	31
Longford	76	185.9	4
Westmeath	155	174.6	14
Tipperary	276	173.0	20
Roscommon	100	154.9	5
Louth	196	152.1	19
Wexford	219	146.3	14
Waterford	160	137.7	8
Galway	337	130.6	20
Laois	110	129.9	11
Carlow	70	123.0	3
Cavan	86	112.9	7
Limerick	169	86.7	14
Wicklow	114	80.0	7
Sligo	52	79.3	2
Mayo	76	58.2	7
Clare	69	58.1	4
Leitrim	16	49.9	2
Kilkenny	46	46.4	4
Cork	229	42.2	16
Kerry	59	39.9	2
Monaghan	24	39.1	1
Total	7,530	158.1	552

Table 4: Number and incidence of confirmed COVID-19 cases by Dublin Local Health Offices* (LHOs) notified in Ireland

Please be advised that the CCA data are currently being validated and this table will be reintroduced once validation is complete.

Note: Local health offices (LHOs) came into operation on 1st September 2005, replacing Community Care Areas (CCAs). LHO population denominators are used in this report rather than CCA population denominators. The LHO rates were calculated using Census 2016 LHO denominator data extracted from the HSE Health Atlas and are not a direct match to the corresponding CCAs

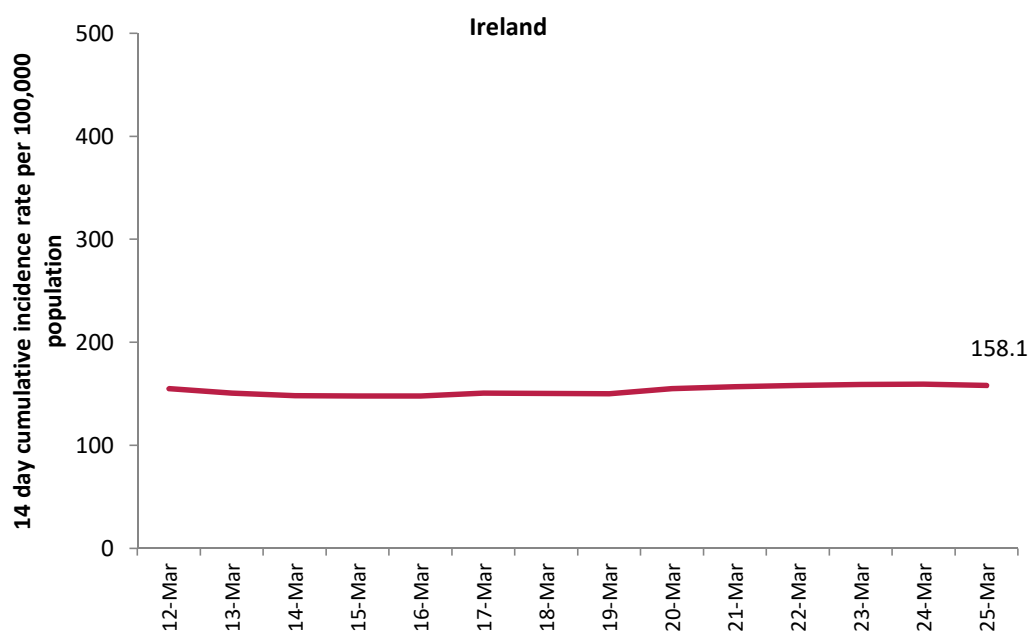


Figure 3: 14 day cumulative incidence rates per 100,000 population of confirmed cases of COVID-19 in Ireland* (12/03/2021 to 25/03/2021)

*14 day incidence rates per 100,000 populations of confirmed cases of COVID-19 for individual counties can be found in appendix 5 of this report

Table 5: Number of confirmed COVID-19 cases by most likely transmission source notified from 12/03/2021 to midnight 25/03/2021

Most likely transmission source	Number of cases	Percent
Travel related	138	1.83%
Close contact with a known confirmed case	4011	53.27%
Healthcare setting acquired: patient	119	1.58%
Healthcare setting acquired: staff	56	0.74%
Community transmission	1425	18.92%
Under investigation	1781	23.65%
Total	7530	100.00%

*Travel related cases include cases who acquire COVID-19 infection outside of Ireland (imported cases) and cases who acquire COVID-19 infection directly from imported cases

Table 6: Cumulative number of confirmed cases of COVID-19 notified in Ireland from 12/03/2021 to midnight 25/03/2021 by age group, hospitalisation and ICU admission*

Age Group (years)	Number of cases (n)	Cases hospitalised (n)	Cases hospitalised (%)	Cases admitted to ICU (n)	Cases admitted to ICU (%)
0-4 yrs	646	7	1.93	<5	5
5-12 yrs	991	10	2.76	0	0
13-18 yrs	588	12	3.31	0	0
19-24 yrs	711	16	4.42	0	0
25-34 yrs	1242	28	7.73	<5	10
35-44 yrs	1356	39	10.77	<5	10
45-54 yrs	815	27	7.46	5	25
55-64 yrs	553	45	12.43	<5	20
65-74 yrs	337	71	19.61	5	25
75-84 yrs	208	72	19.89	<5	5
85+ yrs	83	35	9.67	0	0
Total	7,530	362	100	20	100

* The number of cases hospitalised and admitted to ICU relate only to events notified in the last 14 days and do not include cases notified prior to this and admitted to hospital or ICU in the last 14 days

Deaths among COVID-19 cases

Table 7: Summary of deaths in all COVID-19 cases notified in Ireland from 12/03/2021 up to midnight 25/03/2021

	Number	Percent
Total number of deaths	15	
Confirmed	13	86.67
Probable	1	6.67
Possible	1	6.67
Total number of cases hospitalised	11	73.33
Total number of male cases	10	66.67
M:F ratio	2	
Median age (years)	74	
Mean age (years)	72	
Age range (years)	49 - 86	

*The proportion of cases with underlying clinical conditions may be underestimated due to a delay in updating/validating data.

Acknowledgements

Sincere thanks are extended to all those who are participating in the collection of data and reporting of data used in these reports. This includes the HSE COVID-19 Contact Management Programme (CMP), staff in ICU units, notifying clinicians, laboratory staff, public health doctors, nurses, surveillance scientists, microbiologists and administrative staff.

Report prepared by COVID-19 Epidemiology Team, HPSC

Technical Notes

1. Data Source

Data are based on statutory notifications and were extracted from Computerised Infectious Disease Reporting (CIDR) system at 07:50 on 26/03/2021. Data are provisional and subject to ongoing review, validation and update. As a result, figures in this report may differ from previously published figures.

2. Population data

Population data were taken from Census 2016. Data were aggregated into the following age groups for the analysis: 0-4 years, 5-12 years, 13-18 years, 19-24 years, 25-34 years, 35-44 years, 45-54 years, 55-64 years, 65-74 years, 75-84 years and ≥ 85 years.

3. Transmission classification

Transmission classification is based on country of infection as well as enhanced exposure data (international travel; close contact of a case) recorded in CIDR. Transmission is classified as 'unknown' due to incomplete data on CIDR.

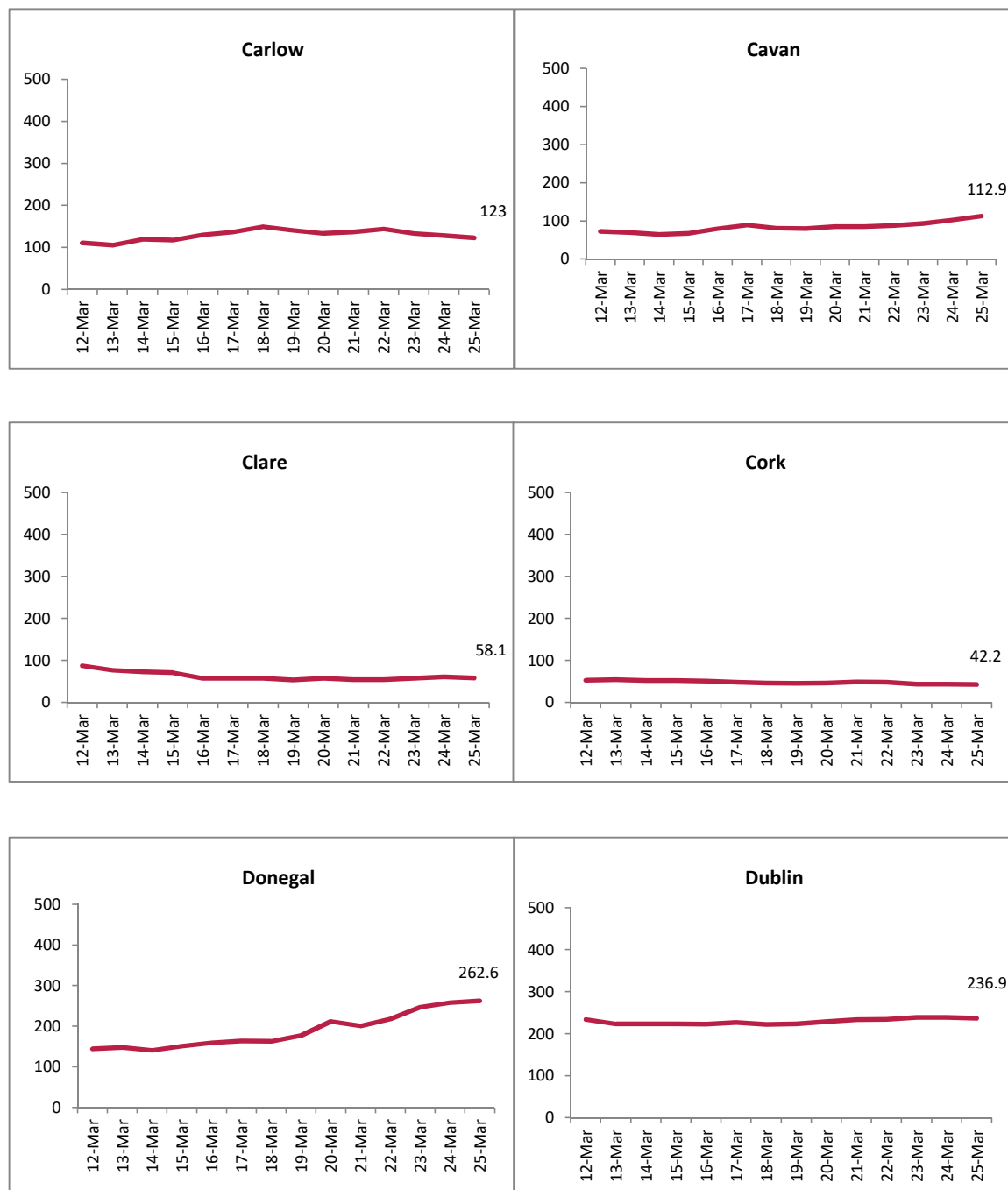
Travel related cases include cases who acquire COVID-19 infection outside of Ireland (imported cases) and cases who acquire COVID-19 infection directly from imported cases.

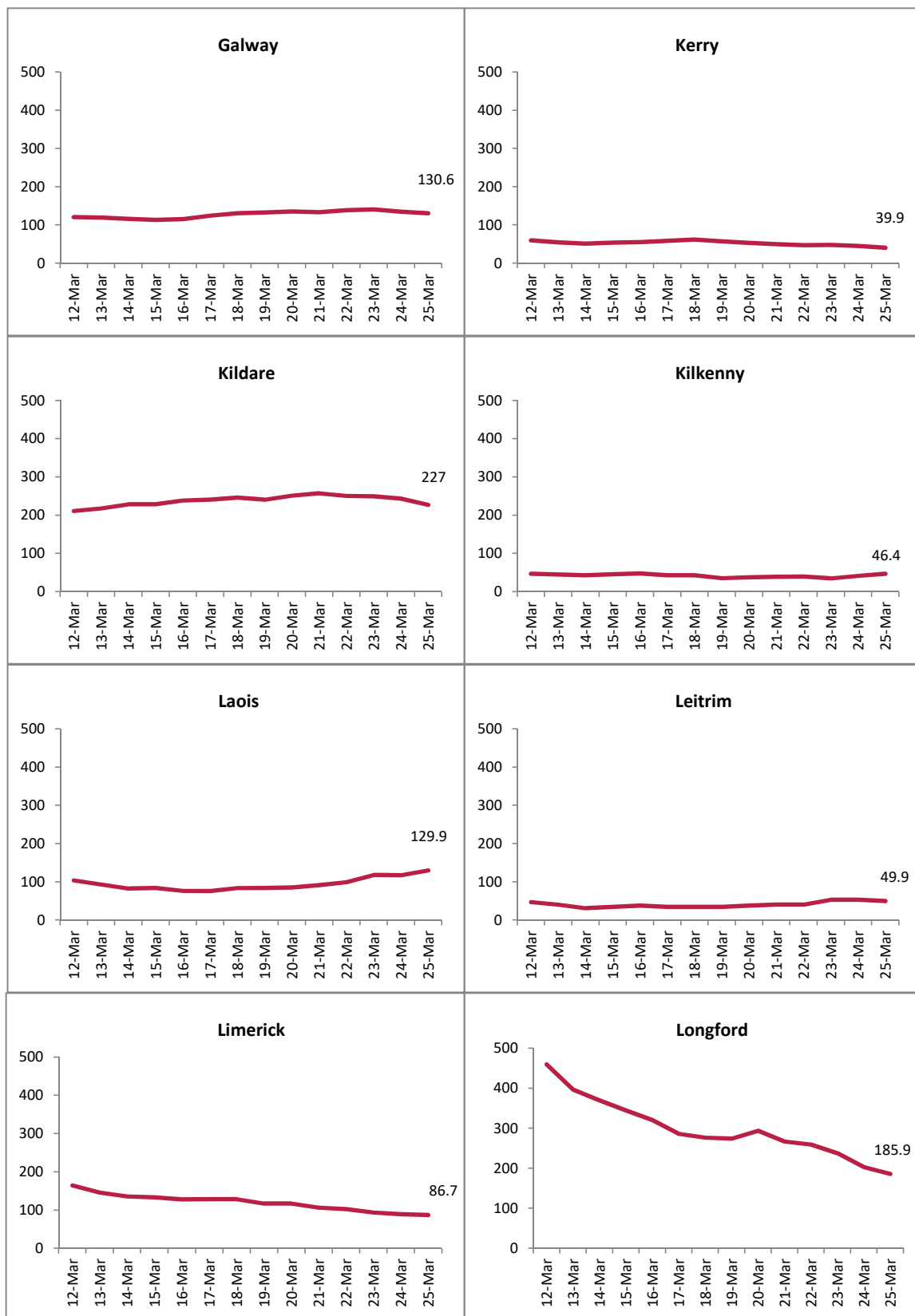
WHO definition of transmission classification is specified below:

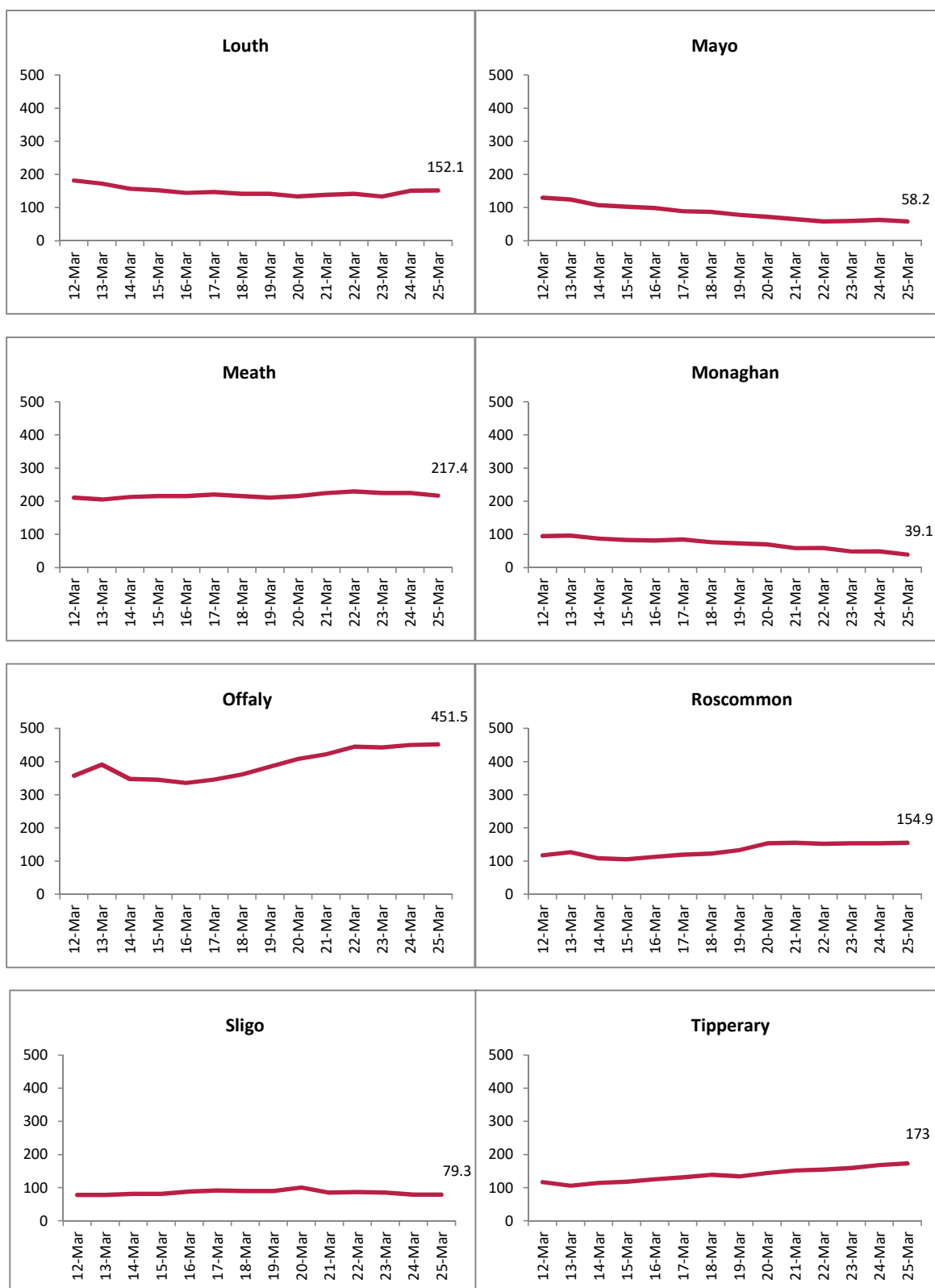
- Community transmission is evidenced by the inability to relate confirmed cases through chains of transmission for a large number of cases, or by increasing positive tests through routine screening of sentinel samples.
- Local transmission indicates locations where the source of infection is within the reporting location.
- Imported cases only indicates locations where all cases have been acquired outside the location of reporting.

Appendix 1

Figure A. 14 day cumulative incidence rates per 100,000 population of confirmed cases of COVID-19 by county (12/03/2021 to 25/03/2021)







Report prepared by Health Protection Surveillance Centre on 26/03/2021



Please be advised that the CCA data are being validated and the CCA graphs (Figure B) will be reintroduced once validation is complete.