



Epidemiology of COVID-19 in Ireland - 14 day report

Report prepared by HPSC on 25/03/2021

Summary characteristics of confirmed COVID-19 cases notified in Ireland from 11/03/2021 up to midnight 24/03/2021

	Number	Percent
Total number of confirmed cases	7,597	
National incidence of confirmed cases per 100,000 population	159.54	
Number of cases hospitalised*	361	4.75
Number of cases admitted to ICU*	23	0.3
Number of deaths among confirmed cases	11	0.14
Case fatality ratio (CFR, %)	0.14	
National incidence of confirmed deaths per 100,000 population	0.23	
Number of cases** associated with clusters	1,972	25.96
Number of imported cases	57	0.75
Number of cases in healthcare workers	212	2.79
Males	3,741	49.24
Females	3,846	50.63
M:F ratio	0.97	
Median age (years)	31	
Mean age (years)	32	
Age range (years)	0 - 99	

* The number of cases hospitalised and admitted to ICU relate only to events notified in the last 14 days and do not include cases notified prior to this and admitted to hospital or ICU in the last 14 days

**Cases may be associated with outbreaks notified outside the timeframe of this report
11/03/2021 - 24/03/2021

Note: Data were extracted from Computerised Infectious Disease Reporting (CIDR) system at 07:44 on 25/03/2021 and are provisional and subject to ongoing review, validation and update. As a result, figures in this report may differ from previously published figures.

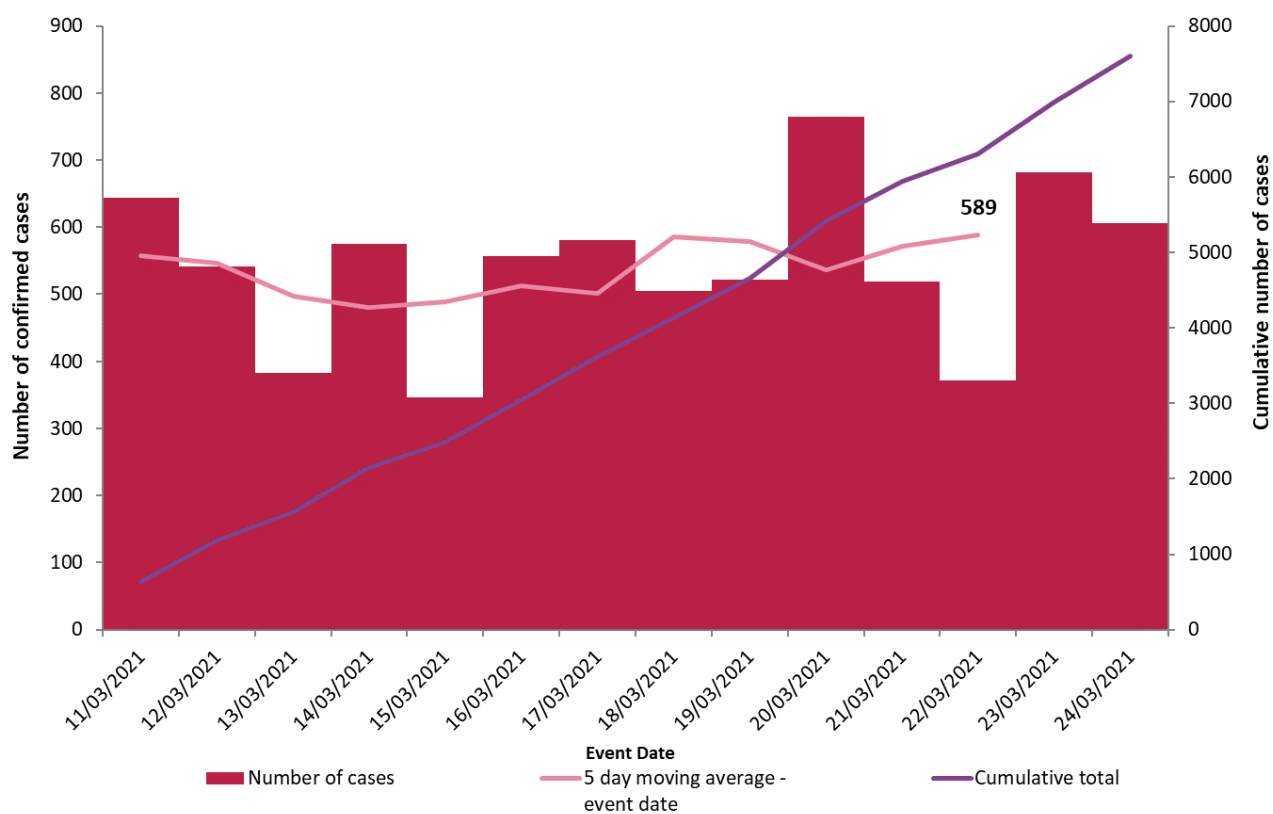


Figure 1. Daily number and cumulative number of confirmed cases of COVID-19, and 5-day moving average, by notification date (n=7,597)

Table 1: Characteristics of confirmed COVID-19 cases notified in Ireland from 11/03/2021 up to midnight on 24/03/2021

Characteristic		Number of cases	Percent
Total number of confirmed cases		7,597	100
Sex	Male:Female ratio	0.97	
	Male	3,741	49.24
	Female	3,846	50.63
	Unknown	10	0.13
Age	Median age (years)	31	
	Mean age (years)	32	
	Age range (years)	0 - 99	
	0-4 yrs	628	8.27
	5-12 yrs	1,003	13.2
	13-18 yrs	612	8.06
	19-24 yrs	741	9.75
	25-34 yrs	1,268	16.69
	35-44 yrs	1,343	17.68
	45-54 yrs	818	10.77
	55-64 yrs	564	7.42
	65-74 yrs	332	4.37
	75-84 yrs	204	2.69
	85+ yrs	84	1.11
Symptom status at time of test*	Yes	4,299	56.59
	No	1,599	21.05
	Unknown	1,699	22.36

*Symptom status is recorded at the time of test and is not updated, therefore a proportion of the asymptomatic cases may subsequently develop symptoms however this will not be captured in the data.

Table 2: Number of confirmed COVID-19 cases by community healthcare organisation (CHO) notified in Ireland from 11/03/2021 to midnight 24/03/2021

CHO Area	Number of confirmed cases	Incidence per 100,000 population
CHO1	588	150.3
CHO2	527	116.3
CHO3	362	94.0
CHO4	299	43.3
CHO5	632	123.8
CHO6	552	144.1
CHO7	1,292	182.6
CHO8	1,306	210.9
CHO9	2,039	328.1
Total	7,597	159.5

Table 3: Number of confirmed COVID-19 cases by county notified in Ireland from 11/03/2021 to midnight 24/03/2021

County	Number of confirmed cases	Incidence per 100,000 population	5 day moving average of confirmed cases (19/03/2021-23/03/2021)
Offaly	351	450.2	33
Donegal	415	260.7	46
Kildare	541	243.1	35
Dublin	3,215	238.6	247
Meath	438	224.6	34
Longford	83	203.1	6
Tipperary	259	162.3	22
Carlow	92	161.6	6
Westmeath	140	157.7	12
Roscommon	99	153.4	7
Louth	195	151.3	17
Wexford	206	137.6	14
Galway	346	134.1	20
Waterford	152	130.8	12
Laois	99	116.9	10
Cavan	74	97.1	5
Limerick	175	89.8	15
Wicklow	127	89.2	8
Sligo	52	79.3	4
Mayo	82	62.8	6
Clare	70	58.9	5
Leitrim	17	53.1	2
Monaghan	30	48.9	1
Kerry	68	46.0	3
Cork	231	42.6	16
Kilkenny	40	40.3	4
Total	7,597	159.5	589

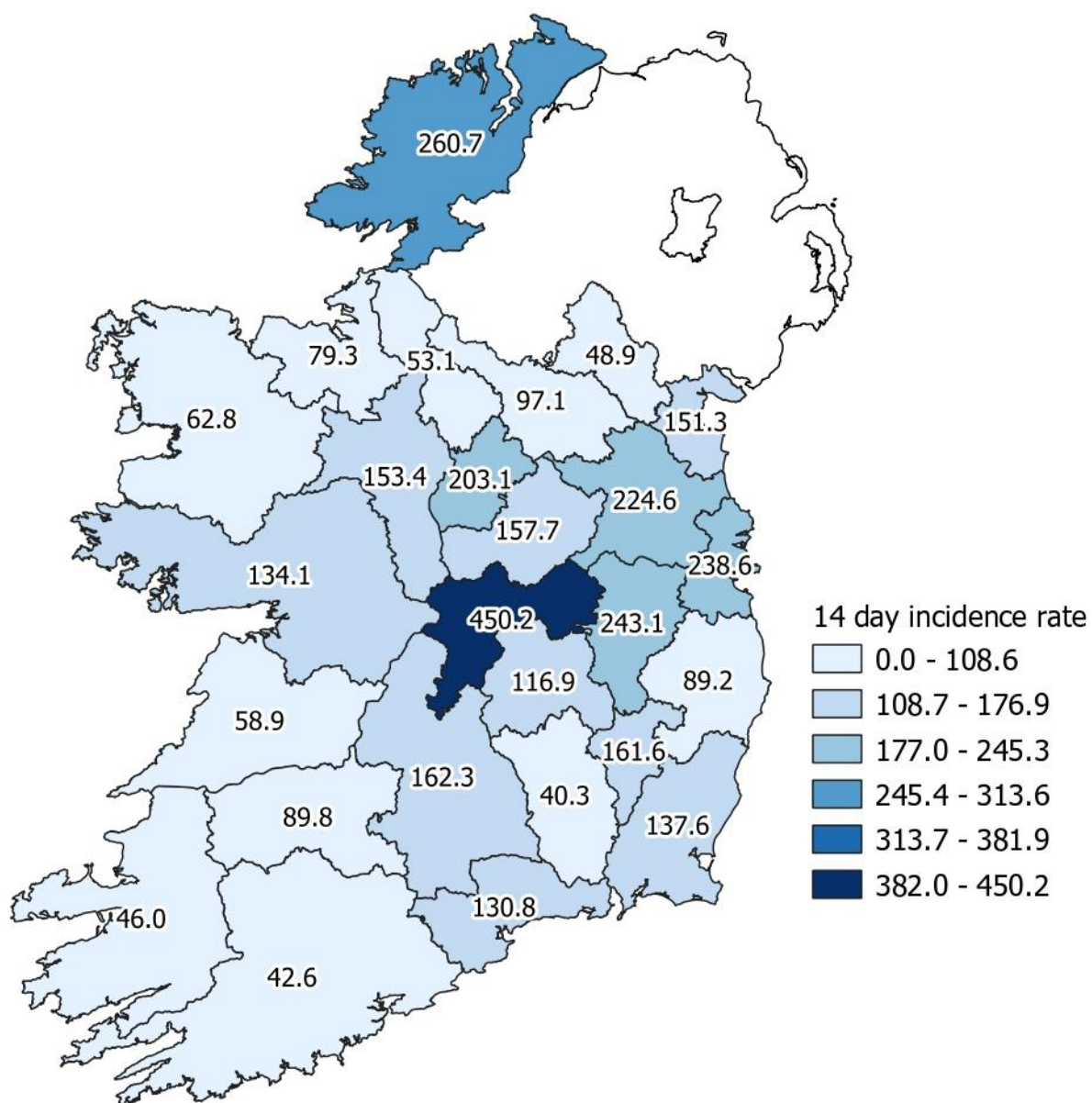


Figure 2: Cumulative incidence rates of confirmed COVID-19 cases per 100,000 population by county notified in Ireland between 11/03/2021 and 24/03/2021

Please do not directly compare county shades to previous maps. The categories listed will change as the number of cases change, which may result in changes to the map shading.

Table 4: Number and incidence of confirmed COVID-19 cases by Dublin Local Health Offices* (LHOs) notified in Ireland

Please be advised that the CCA data are currently being validated and this table will be reintroduced once validation is complete.

Note: Local health offices (LHOs) came into operation on 1st September 2005, replacing Community Care Areas (CCAs). LHO population denominators are used in this report rather than CCA population denominators. The LHO rates were calculated using Census 2016 LHO denominator data extracted from the HSE Health Atlas and are not a direct match to the corresponding CCAs

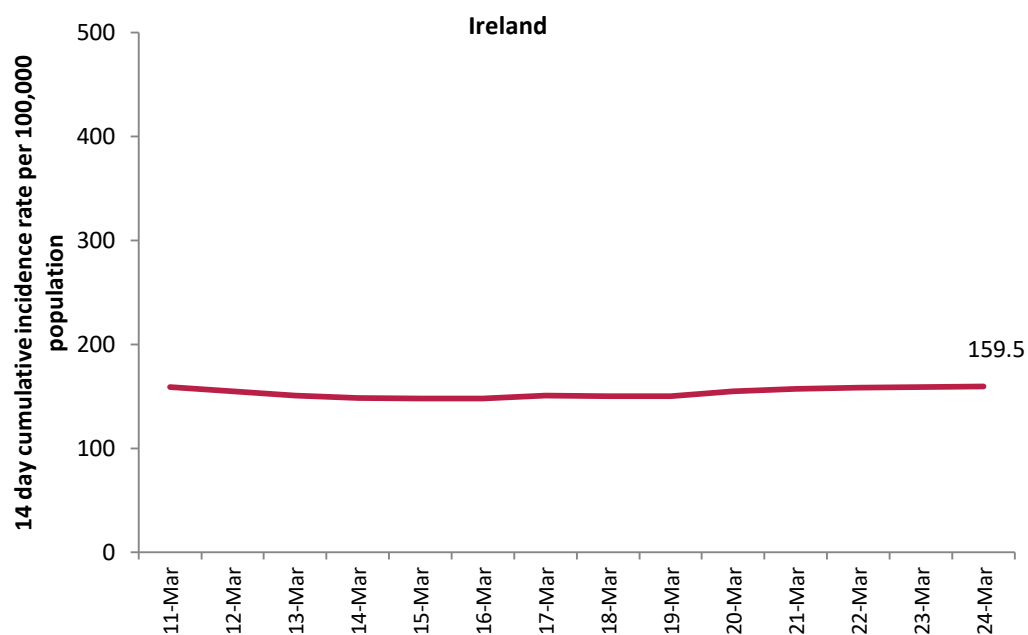


Figure 3: 14 day cumulative incidence rates per 100,000 population of confirmed cases of COVID-19 in Ireland* (11/03/2021 to 24/03/2021)

*14 day incidence rates per 100,000 populations of confirmed cases of COVID-19 for individual counties can be found in appendix 1 of this report

Table 5: Number of confirmed COVID-19 cases by most likely transmission source notified from 11/03/2021 to midnight 24/03/2021

Most likely transmission source	Number of cases	Percent
Travel related	147	1.93%
Close contact with a known confirmed case	3968	52.23%
Healthcare setting acquired: patient	117	1.54%
Healthcare setting acquired: staff	53	0.70%
Community transmission	1470	19.35%
Under investigation	1842	24.25%
Total	7597	100.00%

*Travel related cases include cases who acquire COVID-19 infection outside of Ireland (imported cases) and cases who acquire COVID-19 infection directly from imported cases

Table 6: Cumulative number of confirmed cases of COVID-19 notified in Ireland from 11/03/2021 to midnight 24/03/2021 by age group, hospitalisation and ICU admission*

Age Group (years)	Number of cases (n)	Cases hospitalised (n)	Cases hospitalised (%)	Cases admitted to ICU (n)	Cases admitted to ICU (%)
0-4 yrs	628	7	1.94	<5	4.35
5-12 yrs	1003	10	2.77	0	0
13-18 yrs	612	11	3.05	0	0
19-24 yrs	741	14	3.88	0	0
25-34 yrs	1268	27	7.48	<5	8.70
35-44 yrs	1343	42	11.63	<5	8.70
45-54 yrs	818	33	9.14	8	34.78
55-64 yrs	564	37	10.25	<5	13.04
65-74 yrs	332	67	18.56	6	26.09
75-84 yrs	204	74	20.50	<5	4.35
85+ yrs	84	39	10.80	0	0
Total	7,597	361	100	23	100

* The number of cases hospitalised and admitted to ICU relate only to events notified in the last 14 days and do not include cases notified prior to this and admitted to hospital or ICU in the last 14 days

Deaths among COVID-19 cases

Table 7: Summary of deaths in all COVID-19 cases notified in Ireland from 11/03/2021 up to midnight 24/03/2021

	Number	Percent
Total number of deaths	13	
Confirmed	11	84.62
Probable	1	7.69
Possible	1	7.69
Total number of cases hospitalised	10	76.92
Total number of male cases	9	69.23
M:F ratio	2.25	
Median age (years)	79	
Mean age (years)	76	
Age range (years)	49 - 86	

Table 8: Number of deaths in all COVID-19 cases by sex and age group notified in Ireland from 11/03/2021 up to midnight 24/03/2021

Age group (years)	Female	Male	Total	Percent
<65 yrs	*	*	2	15.38
65-74 yrs	*	*	3	23.08
75-84 yrs	*	*	6	46.15
85+ yrs	*	*	2	15.38
Total	4	9	13	100
Percent	30.77	69.23		

* One or both values <5

Acknowledgements

Sincere thanks are extended to all those who are participating in the collection of data and reporting of data used in these reports. This includes the HSE COVID-19 Contact Management Programme (CMP), staff in ICU units, notifying clinicians, laboratory staff, public health doctors, nurses, surveillance scientists, microbiologists and administrative staff.

Report prepared by COVID-19 Epidemiology Team, HPSC

Technical Notes

1. Data Source

Data are based on statutory notifications and were extracted from Computerised Infectious Disease Reporting (CIDR) system. Data are provisional and subject to ongoing review, validation and update. As a result, figures in this report may differ from previously published figures.

2. Population data

Population data were taken from Census 2016. Data were aggregated into the following age groups for the analysis: 0-4 years, 5-12 years, 13-18 years, 19-24 years, 25-34 years, 35-44 years, 45-54 years, 55-64 years, 65-74 years, 75-84 years and ≥ 85 years.

3. Transmission classification

Transmission classification is based on country of infection as well as enhanced exposure data (international travel; close contact of a case) recorded in CIDR. Transmission is classified as 'unknown' due to incomplete data on CIDR.

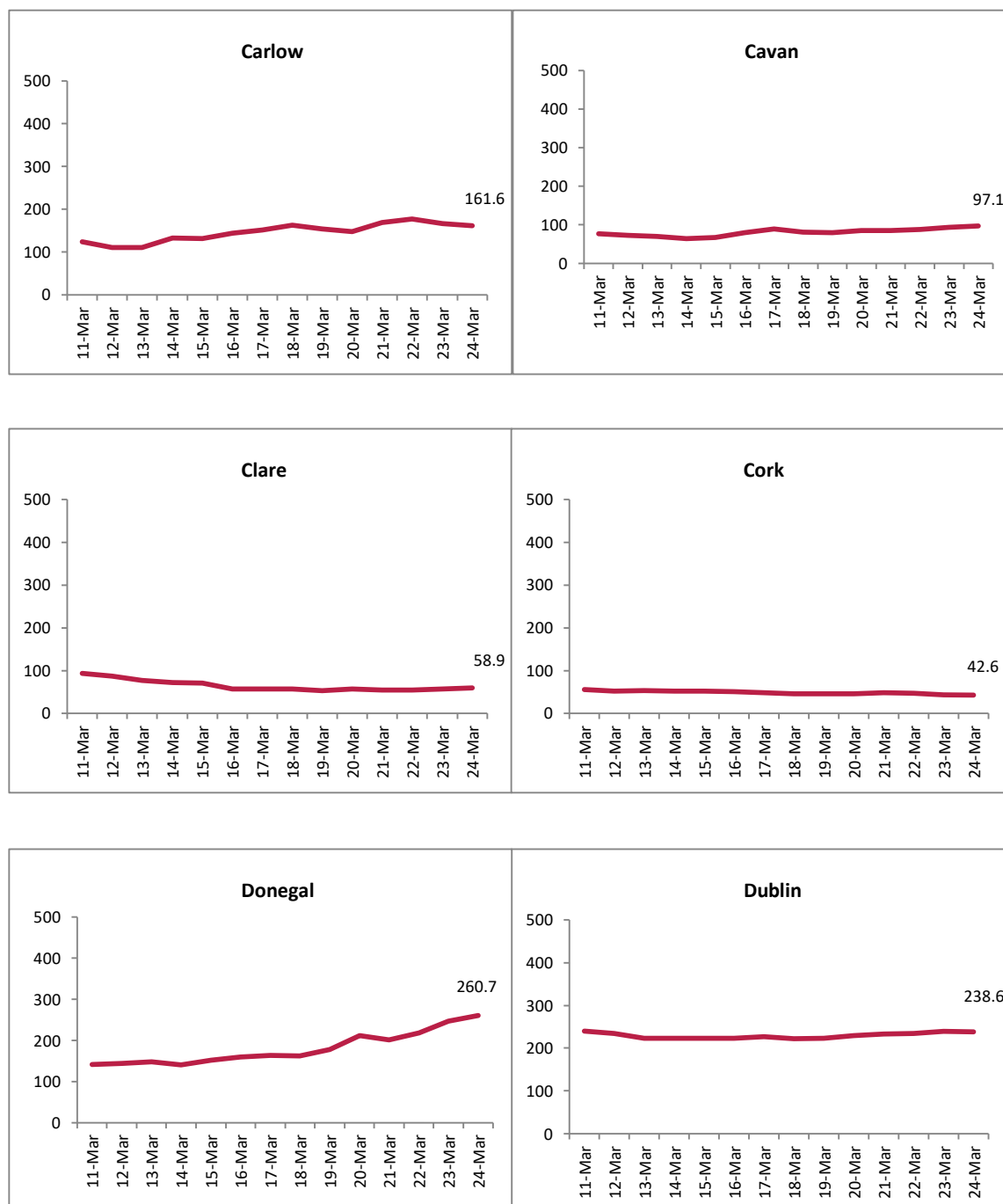
Travel related cases include cases who acquire COVID-19 infection outside of Ireland (imported cases) and cases who acquire COVID-19 infection directly from imported cases.

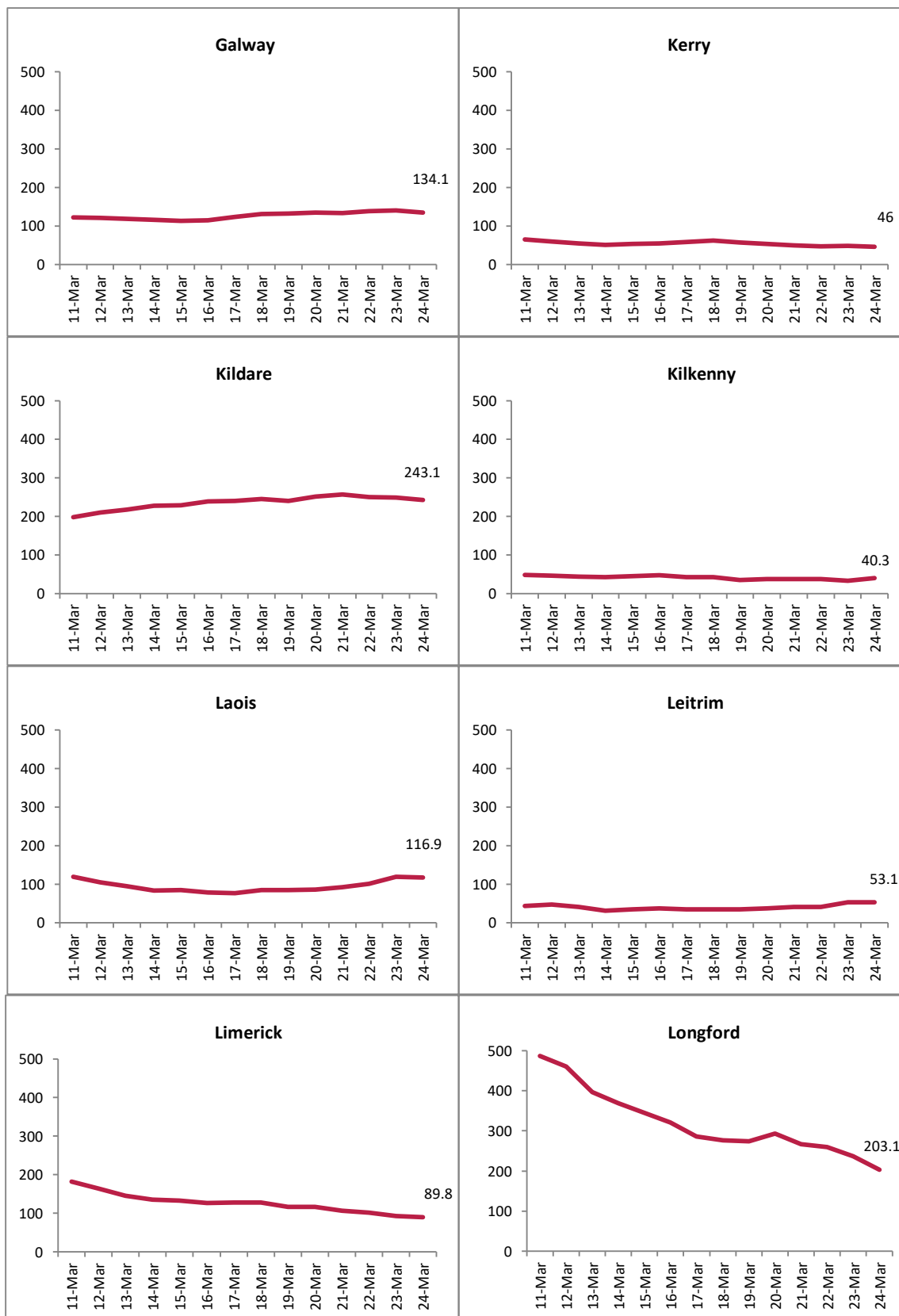
WHO definition of transmission classification is specified below:

- Community transmission is evidenced by the inability to relate confirmed cases through chains of transmission for a large number of cases, or by increasing positive tests through routine screening of sentinel samples.
- Local transmission indicates locations where the source of infection is within the reporting location.
- Imported cases only indicates locations where all cases have been acquired outside the location of reporting.

Appendix 1

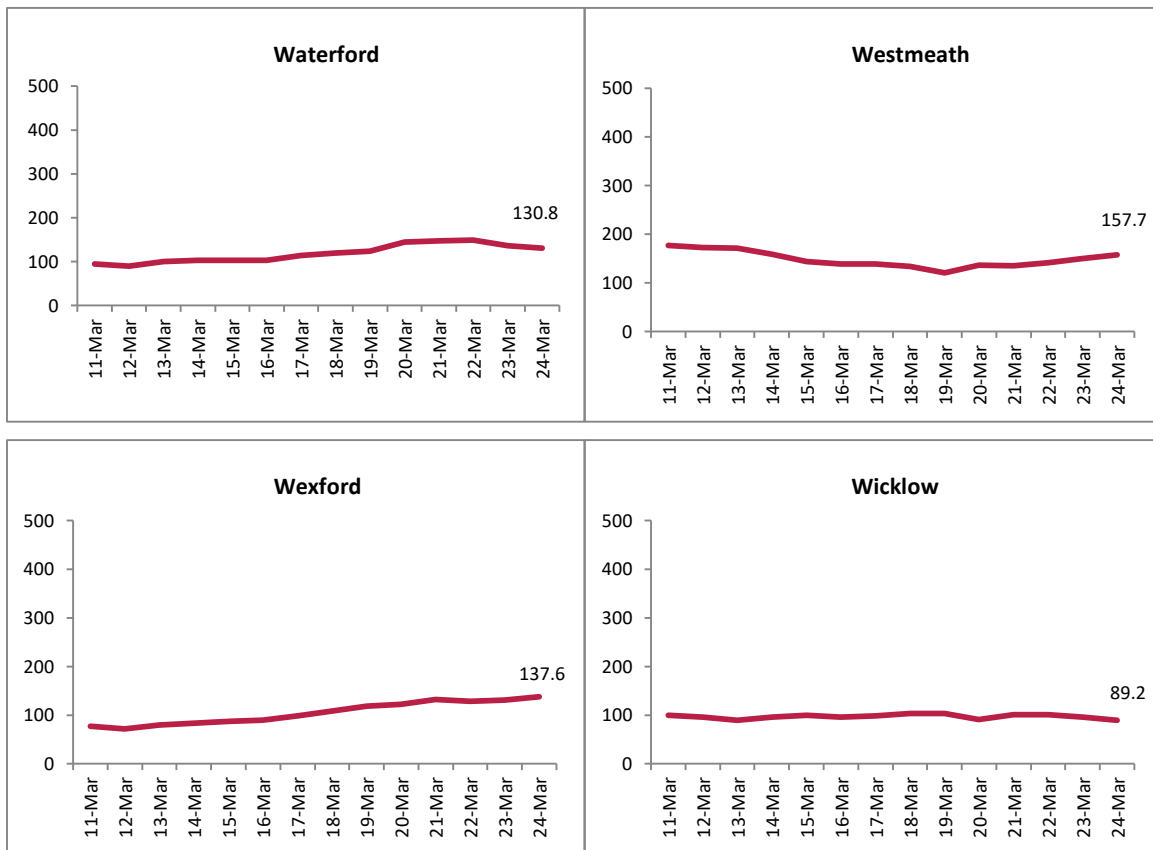
Figure A. 14 day cumulative incidence rates per 100,000 population of confirmed cases of COVID-19 by county (11/03/2021 to 24/03/2021)







Report prepared by Health Protection Surveillance Centre on 25/03/2021



Please be advised that the CCA data are being validated and the CCA graphs (Figure B) will be reintroduced once validation is complete.