



# Epidemiology of COVID-19 in Ireland - 14 day report

Report prepared by HPSC on 13/03/2021

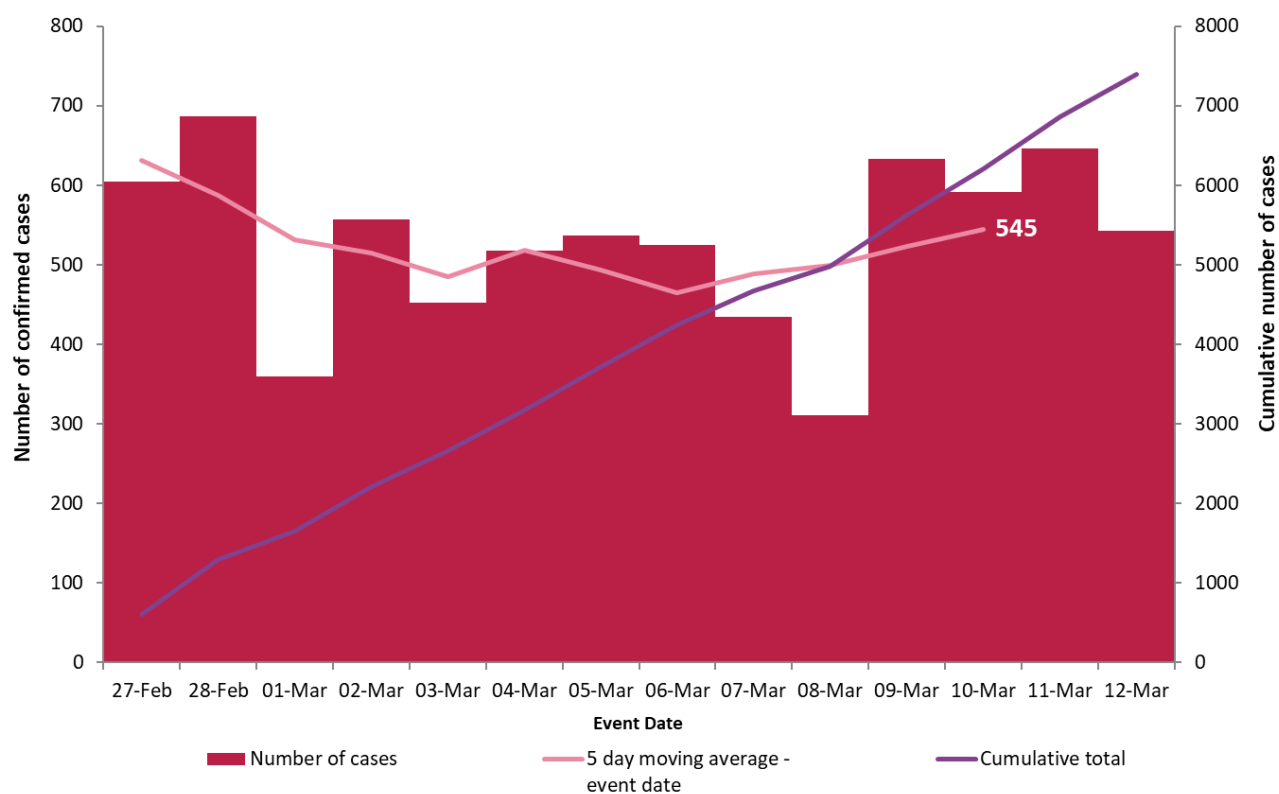
Summary characteristics of confirmed COVID-19 cases notified in Ireland from 27/02/2021 up to midnight 12/03/2021

	Number	Percent
Total number of confirmed cases	7,397	
National incidence of confirmed cases per 100,000 population	155.34	
Number of cases hospitalised*	414	5.6
Number of cases admitted to ICU*	21	0.28
Number of deaths among confirmed cases	11	0.15
Case fatality ratio (CFR, %)	0.15	
National incidence of confirmed deaths per 100,000 population	0.23	
Number of cases** associated with clusters	1,280	17.3
Number of imported cases	45	0.61
Number of cases in healthcare workers	288	3.89
Males	3,722	50.32
Females	3,660	49.48
M:F ratio	1.02	
Median age (years)	32	
Mean age (years)	34	
Age range (years)	0 - 97	

\* The number of cases hospitalised and admitted to ICU relate only to events notified in the last 14 days and do not include cases notified prior to this and admitted to hospital or ICU in the last 14 days

\*\*Cases may be associated with outbreaks notified outside the timeframe of this report  
27/02/2021 - 12/03/2021

Note: Data were extracted from Computerised Infectious Disease Reporting (CIDR) system at 08:03 on 13/03/2021 and are provisional and subject to ongoing review, validation and update. As a result, figures in this report may differ from previously published figures.



**Figure 1. Daily number and cumulative number of confirmed cases of COVID-19, and 5-day moving average, by notification date (n=7,397)**

**Table 1: Characteristics of confirmed COVID-19 cases notified in Ireland from 27/02/2021 up to midnight on 12/03/2021**

Characteristic		Number of cases	Percent
<b>Total number of confirmed cases</b>		<b>7,397</b>	<b>100</b>
<b>Sex</b>	Male:Female ratio	1.02	
	Male	3,722	50.32
	Female	3,660	49.48
	Unknown	15	0.2
<b>Age</b>	Median age (years)	32	
	Mean age (years)	34	
	Age range (years)	0 - 97	
	0-4 yrs	468	6.33
	5-12 yrs	714	9.65
	13-18 yrs	610	8.25
	19-24 yrs	1,022	13.82
	25-34 yrs	1,259	17.02
	35-44 yrs	1,157	15.64
	45-54 yrs	910	12.3
	55-64 yrs	636	8.6
	65-74 yrs	331	4.47
	75-84 yrs	201	2.72
	85+ yrs	88	1.19
	Unknown	1	0.01
<b>Symptom status at time of test*</b>	Yes	4,193	56.69
	No	1,493	20.18
	Unknown	1,711	23.13

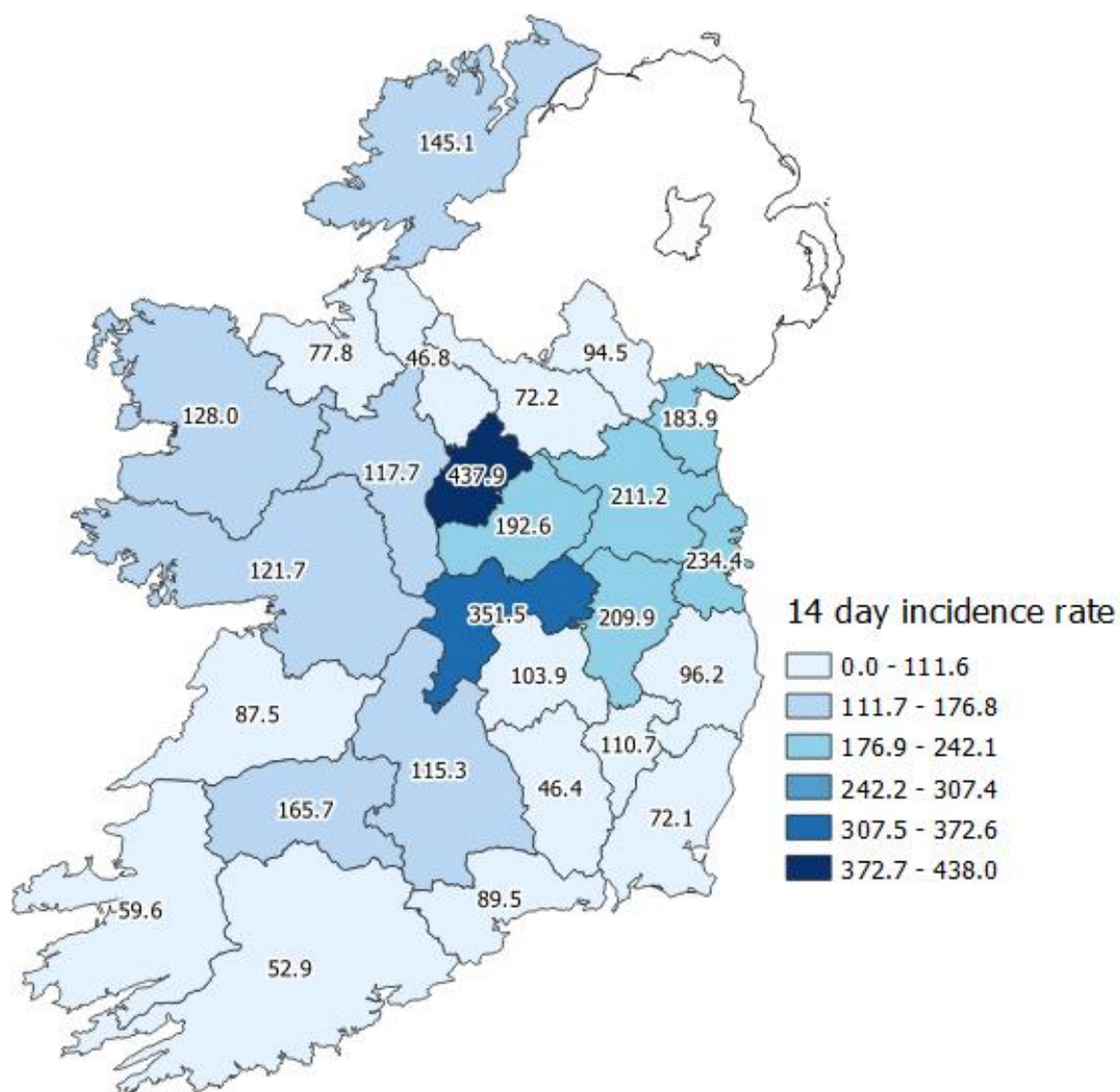
\*Symptom status is recorded at the time of test and is not updated, therefore a proportion of the asymptomatic cases may subsequently develop symptoms however this will not be captured in the data.

Table 2: Number of confirmed COVID-19 cases by community healthcare organisation (CHO) notified in Ireland from 27/02/2021 to midnight 12/03/2021

CHO Area	Number of confirmed cases	Incidence per 100,000 population
CHO1	410	104.8
CHO2	557	122.9
CHO3	510	132.5
CHO4	375	54.3
CHO5	422	82.7
CHO6	669	174.6
CHO7	1,160	163.9
CHO8	1,361	219.8
CHO9	1,933	311.1
Total	7,397	155.3

Table 3: Number of confirmed COVID-19 cases by county notified in Ireland from 27/02/2021 to midnight 12/03/2021

County	Number of confirmed cases	Incidence per 100,000 population	5 day moving average of confirmed cases (08/03/2021-12/03/2021)
Longford	179	437.9	11
Offaly	274	351.5	23
Dublin	3,158	234.4	223
Meath	412	211.2	33
Kildare	467	209.9	52
Westmeath	171	192.6	8
Louth	237	183.9	14
Limerick	323	165.7	23
Donegal	231	145.1	23
Mayo	167	128.0	10
Galway	314	121.7	24
Roscommon	76	117.7	7
Tipperary	184	115.3	10
Carlow	63	110.7	4
Laois	88	103.9	4
Wicklow	137	96.2	8
Monaghan	58	94.5	4
Waterford	104	89.5	10
Clare	104	87.5	4
Sligo	51	77.8	4
Cavan	55	72.2	3
Wexford	108	72.1	9
Kerry	88	59.6	6
Cork	287	52.9	23
Leitrim	15	46.8	1
Kilkenny	46	46.4	3
Total	7,397	155.3	545



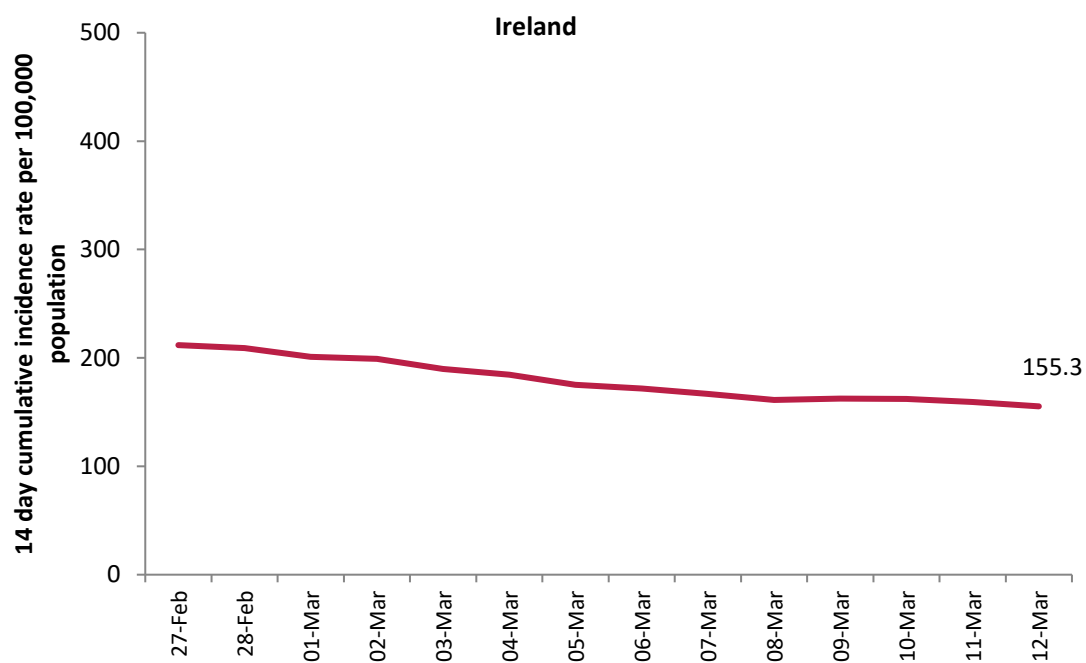
**Figure 2: Cumulative 14-day incidence rates of confirmed COVID-19 cases per 100,000 population by county notified in Ireland between 27/02/2021 and 12/03/2021**

*Please do not directly compare county shades to previous maps. The categories listed will change as the number of cases change, which may result in changes to the map shading.*

**Table 4: Number and incidence of confirmed COVID-19 cases by Dublin Local Health Offices\* (LHOs) notified in Ireland with a notification date between 27/02/2021 and 12/03/2021**

CCA	Local Health Office	Number of cases in past 14 days based on notification date	14 day incidence rates based on notification dates
CCA1	Dublin South	149	109.5
CCA2	Dublin South East	385	311.2
CCA3	Dublin South City	123	82.0
CCA4	Dublin South West	220	136.7
CCA5	Dublin West	348	224.0
CCA6	Dublin North West	623	300.0
CCA7	Dublin North Central	848	548.6
CCA8	Dublin North	462	178.3
<b>Dublin</b>		<b>3,158</b>	<b>234.4</b>

**Note:** Local health offices (LHOs) came into operation on 1<sup>st</sup> September 2005, replacing Community Care Areas (CCAs). LHO population denominators are used in this report rather than CCA population denominators. The LHO rates were calculated using Census 2016 LHO denominator data extracted from the HSE Health Atlas and are not a direct match to the corresponding CCAs.



**Figure 3: 14 day cumulative incidence rates per 100,000 population of confirmed cases of COVID-19 in Ireland\* (27/02/2021 to 12/03/2021)**

\*14 day incidence rates per 100,000 populations of confirmed cases of COVID-19 for individual counties can be found in appendix 1 of this report

**Table 5: Number of confirmed COVID-19 cases by most likely transmission source notified from 27/02/2021 to midnight 12/03/2021**

Most likely transmission source	Number of cases	Percent
Travel related*	102	1.38%
Close contact with a known confirmed case	3,760	50.83%
Healthcare setting acquired: patient	102	1.38%
Healthcare setting acquired: staff	75	1.01%
Community transmission	1,442	19.49%
Under investigation	1,916	25.90%
<b>Total</b>	<b>7,397</b>	<b>100.00%</b>

\*Travel related cases include cases who acquire COVID-19 infection outside of Ireland (imported cases) and cases who acquire COVID-19 infection directly from imported cases

**Table 6: Cumulative number of confirmed cases of COVID-19 notified in Ireland from 27/02/2021 to midnight 12/03/2021 by age group, hospitalisation and ICU admission\***

Age Group (years)	Number of cases (n)	Cases hospitalised (n)	Cases hospitalised (%)	Cases admitted to ICU (n)	Cases admitted to ICU (%)
0-4 yrs	468	19	4.59	0	0
5-12 yrs	714	5	1.21	0	0
13-18 yrs	610	11	2.66	0	0
19-24 yrs	1,022	50	12.08	0	0
25-34 yrs	1,259	36	8.70	<5	
35-44 yrs	1,157	37	8.94	<5	
45-54 yrs	910	51	12.32	6	28.57
55-64 yrs	636	49	11.84	5	23.81
65-74 yrs	331	45	10.87	<5	
75-84 yrs	201	70	16.91	<5	
85+ yrs	88	41	9.90	<5	
Unknown	1			0	0
<b>Total</b>	<b>7,397</b>	<b>414</b>	<b>100</b>	<b>21</b>	<b>100</b>

\* The number of cases hospitalised and admitted to ICU relate only to events notified in the last 14 days and do not include cases notified prior to this and admitted to hospital or ICU in the last 14 days



## Deaths among COVID-19 cases

**Table 7: Summary of deaths in all COVID-19 cases notified in Ireland from 27/02/2021 up to midnight 12/03/2021**

	Number	Percent
Total number of deaths	15	
Confirmed	11	73.33
Possible	4	26.67
Total number of cases hospitalised	11	73.33
Total number of male cases	9	60.00
M:F ratio	1.5	
Median age (years)	79	
Mean age (years)	68	
Age range (years)	0 - 94	

**Table 8: Number of deaths in all COVID-19 cases by sex and age group notified in Ireland from 27/02/2021 up to midnight 12/03/2021**

Age group (years)	Female	Male	Total	Percent
<64	*	*	7	46.67
65-84 yrs	*	*	4	26.67
85+ yrs	*	*	4	26.67
<b>Total</b>	<b>6</b>	<b>9</b>	<b>15</b>	<b>100</b>
<b>Percent</b>	<b>40</b>	<b>60</b>		

\*One or both values <5

## **Acknowledgements**

Sincere thanks are extended to all those who are participating in the collection of data and reporting of data used in these reports. This includes the HSE COVID-19 Contact Management Programme (CMP), staff in ICU units, notifying clinicians, laboratory staff, public health doctors, nurses, surveillance scientists, microbiologists and administrative staff.

**Report prepared by COVID-19 Epidemiology Team, HPSC**

## Technical Notes

### 1. Data Source

Data are based on statutory notifications and were extracted from Computerised Infectious Disease Reporting (CIDR) system. Data are provisional and subject to ongoing review, validation and update. As a result, figures in this report may differ from previously published figures.

### 2. Population data

Population data were taken from Census 2016. Data were aggregated into the following age groups for the analysis: 0-4 years, 5-12 years, 13-18 years, 19-24 years, 25-34 years, 35-44 years, 45-54 years, 55-64 years, 65-74 years, 75-84 years and  $\geq 85$  years.

### 3. Transmission classification

Transmission classification is based on country of infection as well as enhanced exposure data (international travel; close contact of a case) recorded in CIDR. Transmission is classified as 'unknown' due to incomplete data on CIDR.

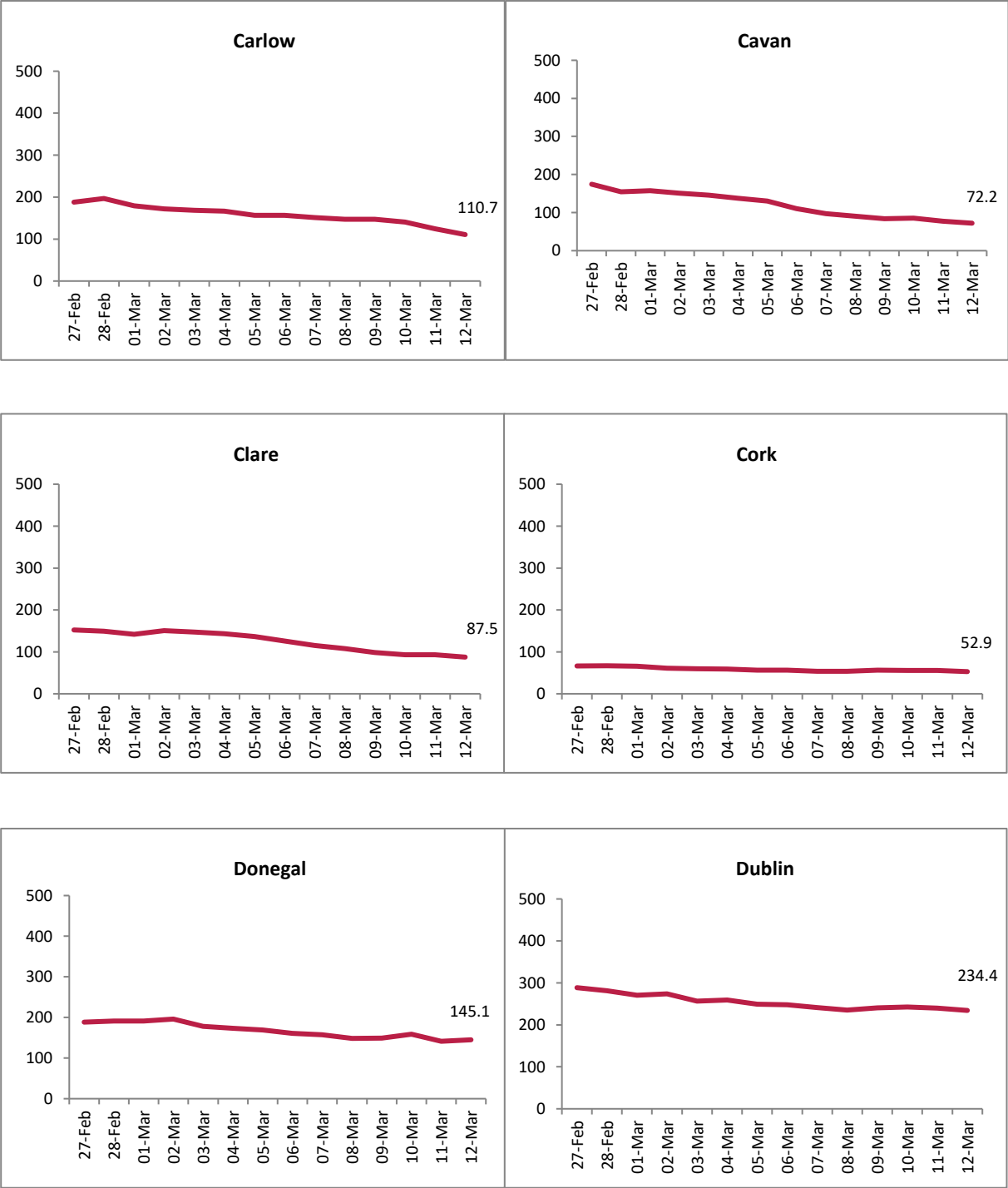
Travel related cases include cases who acquire COVID-19 infection outside of Ireland (imported cases) and cases who acquire COVID-19 infection directly from imported cases.

WHO definition of transmission classification is specified below:

- Community transmission is evidenced by the inability to relate confirmed cases through chains of transmission for a large number of cases, or by increasing positive tests through routine screening of sentinel samples.
- Local transmission indicates locations where the source of infection is within the reporting location.
- Imported cases only indicates locations where all cases have been acquired outside the location of reporting.

Appendix 1

Figure A. 14 day cumulative incidence rates per 100,000 population of confirmed cases of COVID-19 by county (27/02/2021 to 12/03/2021)



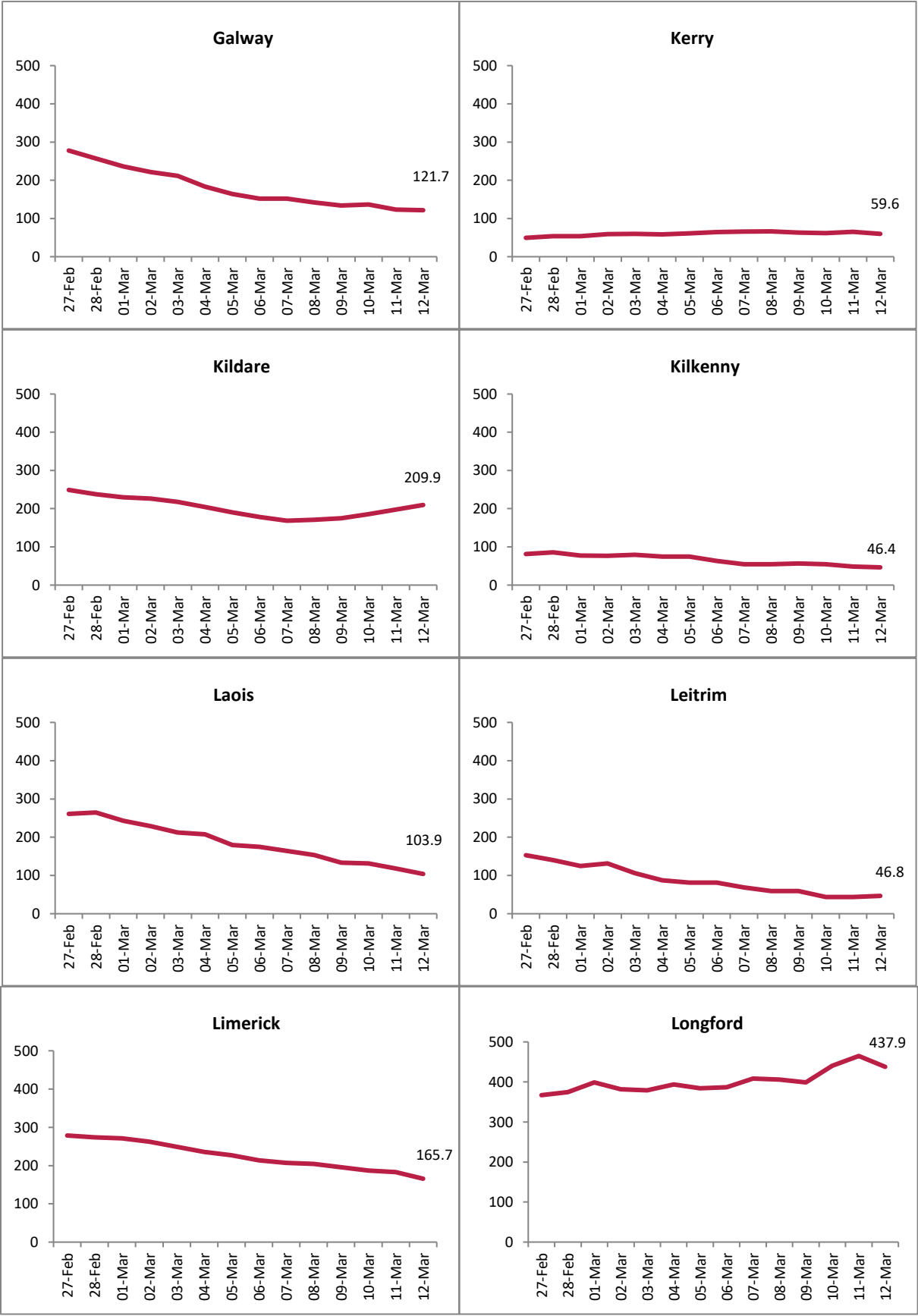






Figure B. 14 day cumulative incidence rates per 100,000 population of confirmed cases of COVID-19 by Dublin CCA (27/02/2021 to 12/03/2021)

