



Epidemiology of COVID-19 in Ireland - 14 day report

Report prepared by HPSC on 12/03/2021

Summary characteristics of confirmed COVID-19 cases notified in Ireland from 26/02/2021 up to midnight 11/03/2021

	Number	Percent
Total number of confirmed cases	7,588	
National incidence of confirmed cases per 100,000 population	159.35	
Number of cases hospitalised*	450	5.93
Number of cases admitted to ICU*	17	0.22
Number of deaths among confirmed cases	13	0.17
Case fatality ratio (CFR, %)	0.17	
National incidence of confirmed deaths per 100,000 population	0.27	
Number of cases** associated with clusters	1,307	17.22
Number of imported cases	45	0.59
Number of cases in healthcare workers	307	4.05
Males	3,802	50.11
Females	3,768	49.66
M:F ratio	1.01	
Median age (years)	32	
Mean age (years)	34	
Age range (years)	0 - 97	

* The number of cases hospitalised and admitted to ICU relate only to events notified in the last 14 days and do not include cases notified prior to this and admitted to hospital or ICU in the last 14 days

**Cases may be associated with outbreaks notified outside the timeframe of this report
26/02/2021 - 11/03/2021

Note: Data were extracted from Computerised Infectious Disease Reporting (CIDR) system at 08:01 on 12/03/2021 and are provisional and subject to ongoing review, validation and update. As a result, figures in this report may differ from previously published figures.

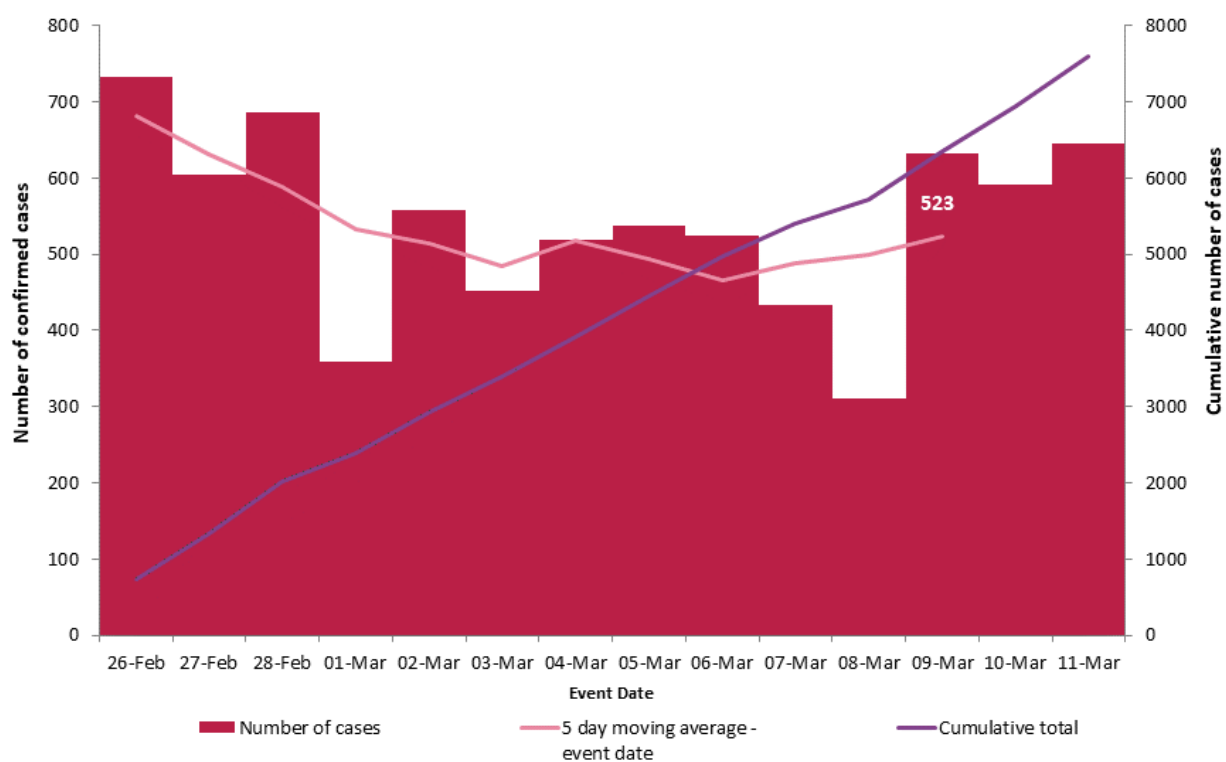


Figure 1. Daily number and cumulative number of confirmed cases of COVID-19, and 5-day moving average, by notification date (n=7,588)

Table 1: Characteristics of confirmed COVID-19 cases notified in Ireland from 26/02/2021 up to midnight on 11/03/2021

Characteristic		Number of cases	Percent
Total number of confirmed cases		7,588	100
Sex	Male:Female ratio	1.01	
	Male	3,802	50.11
	Female	3,768	49.66
	Unknown	18	0.24
Age	Median age (years)	32	
	Mean age (years)	34	
	Age range (years)	0 - 97	
	0-4 yrs	511	6.73
	5-12 yrs	713	9.4
	13-18 yrs	608	8.01
	19-24 yrs	1,031	13.59
	25-34 yrs	1,307	17.22
	35-44 yrs	1,189	15.67
	45-54 yrs	940	12.39
	55-64 yrs	658	8.67
	65-74 yrs	335	4.41
	75-84 yrs	202	2.66
	85+ yrs	93	1.23
	Unknown	1	0.01
Symptom status at time of test*	Yes	4,302	56.69
	No	1,548	20.4
	Unknown	1,738	22.9

*Symptom status is recorded at the time of test and is not updated, therefore a proportion of the asymptomatic cases may subsequently develop symptoms however this will not be captured in the data.

Table 2: Number of confirmed COVID-19 cases by community healthcare organisation (CHO) notified in Ireland from 26/02/2021 to midnight 11/03/2021

CHO Area	Number of confirmed cases	Incidence per 100,000 population
CHO1	414	105.8
CHO2	567	125.1
CHO3	547	142.1
CHO4	399	57.8
CHO5	452	88.6
CHO6	681	177.7
CHO7	1,148	162.2
CHO8	1,393	224.9
CHO9	1,987	319.8
Total	7,588	159.3

Table 3: Number of confirmed COVID-19 cases by county notified in Ireland from 26/02/2021 to midnight 11/03/2021

County	Number of confirmed cases	Incidence per 100,000 population	5 day moving average of confirmed cases (07/03/2021-11/03/2021)
Longford	190	464.9	13
Offaly	289	370.7	23
Dublin	3,234	240.0	213
Meath	407	208.7	30
Kildare	440	197.7	46
Westmeath	173	194.9	8
Limerick	359	184.2	26
Louth	234	181.6	14
Donegal	225	141.3	20
Mayo	176	134.9	10
Carlow	71	124.7	4
Galway	318	123.2	23
Laois	100	118.1	4
Tipperary	184	115.3	10
Roscommon	73	113.1	5
Monaghan	66	107.5	5
Wicklow	142	99.7	10
Waterford	111	95.5	10
Clare	111	93.4	4
Wexford	117	78.1	7
Cavan	59	77.5	3
Sligo	50	76.3	5
Kerry	96	65.0	5
Cork	303	55.8	20
Kilkenny	46	46.4	2
Leitrim	14	43.7	1
Total	7,588	159.3	523

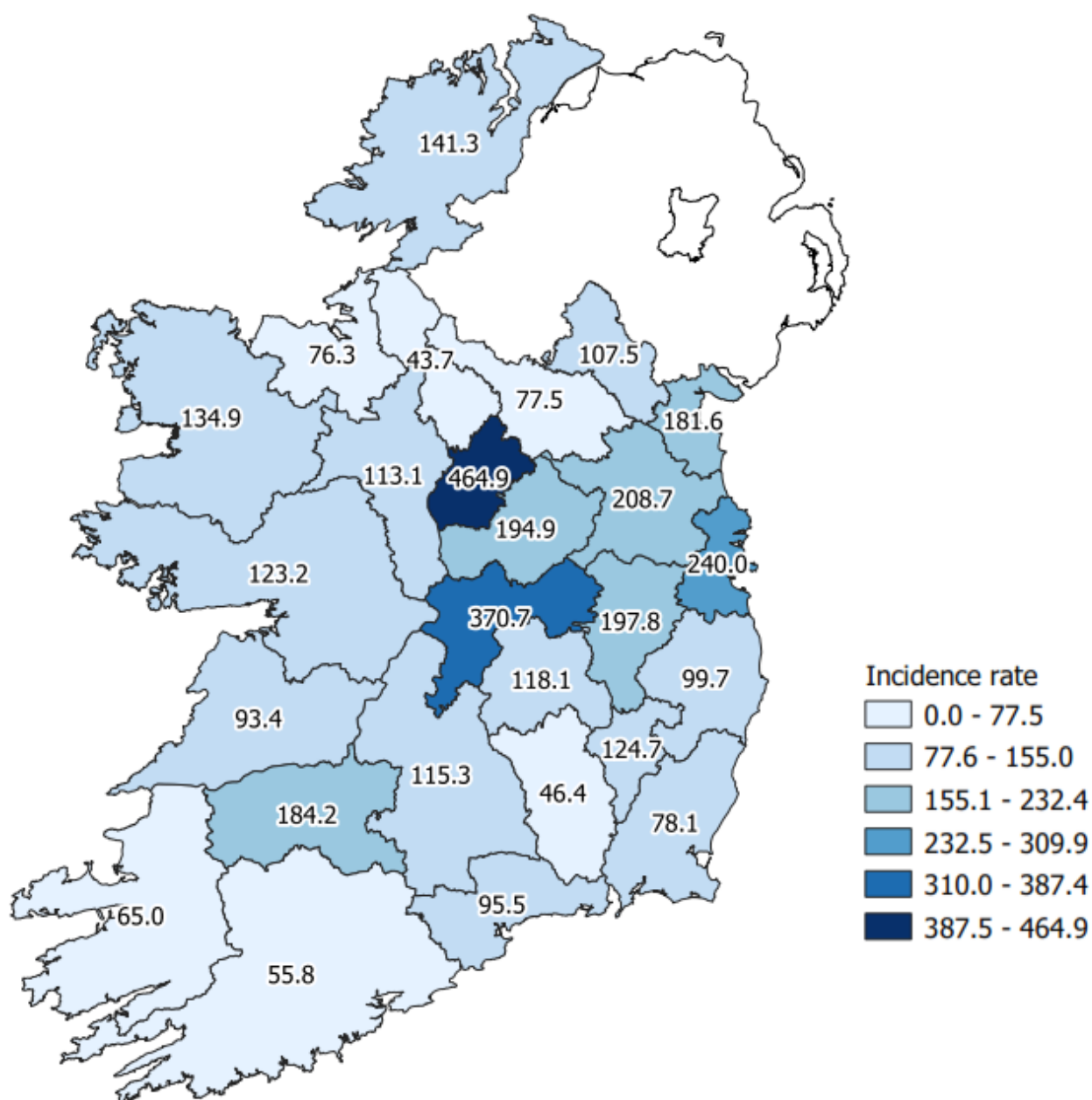


Figure 2: Cumulative 14-day incidence rates of confirmed COVID-19 cases per 100,000 population by county notified in Ireland between 26/02/2021 and 11/03/2021

Please do not directly compare county shades to previous maps. The categories listed will change as the number of cases change, which may result in changes to the map shading.

Table 4: Number and incidence of confirmed COVID-19 cases by Dublin Local Health Offices* (LHOs) notified in Ireland with a notification date between 26/02/2021 and 11/03/2021

CCA	Local Health Office	Number of cases in past 14 days based on notification date	14 day incidence rates based on notification dates
CCA1	Dublin South	150	110.2
CCA2	Dublin South East	391	316.1
CCA3	Dublin South City	120	80.0
CCA4	Dublin South West	234	145.4
CCA5	Dublin West	352	226.6
CCA6	Dublin North West	628	302.4
CCA7	Dublin North Central	891	576.4
CCA8	Dublin North	468	180.6
Dublin		3,234	240.0

Note: Local health offices (LHOs) came into operation on 1st September 2005, replacing Community Care Areas (CCAs). LHO population denominators are used in this report rather than CCA population denominators. The LHO rates were calculated using Census 2016 LHO denominator data extracted from the HSE Health Atlas and are not a direct match to the corresponding CCAs.

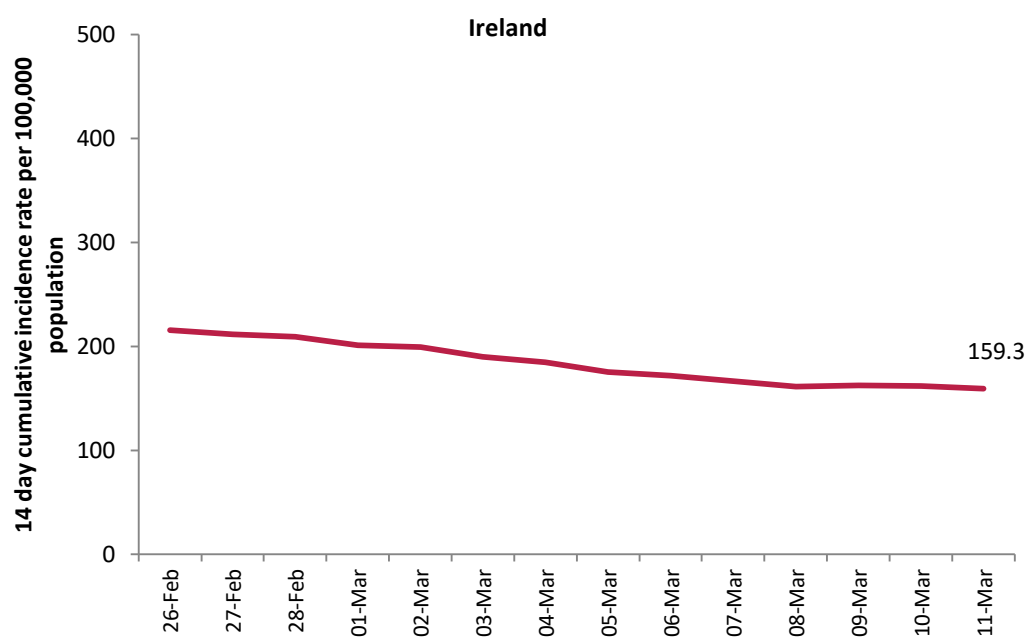


Figure 3: 14 day cumulative incidence rates per 100,000 population of confirmed cases of COVID-19 in Ireland* (26/02/2021 to 11/03/2021)

*14 day incidence rates per 100,000 populations of confirmed cases of COVID-19 for individual counties can be found in appendix 1 of this report

Table 5: Number of confirmed COVID-19 cases by most likely transmission source notified from 26/02/2021 to midnight 11/03/2021

Most likely transmission source	Number of cases	Percent
Travel related	109	1.44%
Close contact with a known confirmed case	3,913	51.57%
Healthcare setting acquired: patient	105	1.38%
Healthcare setting acquired: staff	87	1.15%
Community transmission	1,435	18.91%
Under investigation	1,939	25.55%
Total	7,588	100.00%

*Travel related cases include cases who acquire COVID-19 infection outside of Ireland (imported cases) and cases who acquire COVID-19 infection directly from imported cases

Table 6: Cumulative number of confirmed cases of COVID-19 notified in Ireland from 26/02/2021 to midnight 11/03/2021 by age group, hospitalisation and ICU admission*

Age Group (years)	Number of cases (n)	Cases hospitalised (n)	Cases hospitalised (%)	Cases admitted to ICU (n)	Cases admitted to ICU (%)
0-4 yrs	511	23	5.11	0	0.00
5-12 yrs	713	14	3.11	0	0.00
13-18 yrs	608	18	4.00	0	0.00
19-24 yrs	1,031	54	12.00	0	0.00
25-34 yrs	1,307	38	8.44	<5	
35-44 yrs	1,189	43	9.56	0	0.00
45-54 yrs	940	52	11.56	6	35.29
55-64 yrs	658	50	11.11	<5	
65-74 yrs	335	47	10.44	<5	
75-84 yrs	202	68	15.11	<5	
85+ yrs	93	43	9.56	0	0.00
Unknown	1			0	0.00
Total	7,588	450	100.00	17	100.00

* The number of cases hospitalised and admitted to ICU relate only to events notified in the last 14 days and do not include cases notified prior to this and admitted to hospital or ICU in the last 14 days

Deaths among COVID-19 cases

Table 7: Summary of deaths in all COVID-19 cases notified in Ireland from 26/02/2021 up to midnight 11/03/2021

	Number	Percent
Total number of deaths	16	
Confirmed	13	81.25
Possible	3	18.75
Total number of cases hospitalised	12	75
Total number of male cases	9	56.25
M:F ratio	1.29	
Median age (years)	78.5	
Mean age (years)	69	
Age range (years)	0 - 94	

Table 8: Number of deaths in all COVID-19 cases by sex and age group notified in Ireland from 26/02/2021 up to midnight 11/03/2021

Age group (years)	Female	Male	Total	Percent
<65 yrs	*	*	6	37.5
65-84 yrs	*	*	6	37.5
85+ yrs	*	*	4	25
Total	7	9	16	100
Percent	43.75	56.25		

* One or both values <5

Acknowledgements

Sincere thanks are extended to all those who are participating in the collection of data and reporting of data used in these reports. This includes the HSE COVID-19 Contact Management Programme (CMP), staff in ICU units, notifying clinicians, laboratory staff, public health doctors, nurses, surveillance scientists, microbiologists and administrative staff.

Report prepared by COVID-19 Epidemiology Team, HPSC

Technical Notes

1. Data Source

Data are based on statutory notifications and were extracted from Computerised Infectious Disease Reporting (CIDR) system. Data are provisional and subject to ongoing review, validation and update. As a result, figures in this report may differ from previously published figures.

2. Population data

Population data were taken from Census 2016. Data were aggregated into the following age groups for the analysis: 0-4 years, 5-12 years, 13-18 years, 19-24 years, 25-34 years, 35-44 years, 45-54 years, 55-64 years, 65-74 years, 75-84 years and ≥ 85 years.

3. Transmission classification

Transmission classification is based on country of infection as well as enhanced exposure data (international travel; close contact of a case) recorded in CIDR. Transmission is classified as 'unknown' due to incomplete data on CIDR.

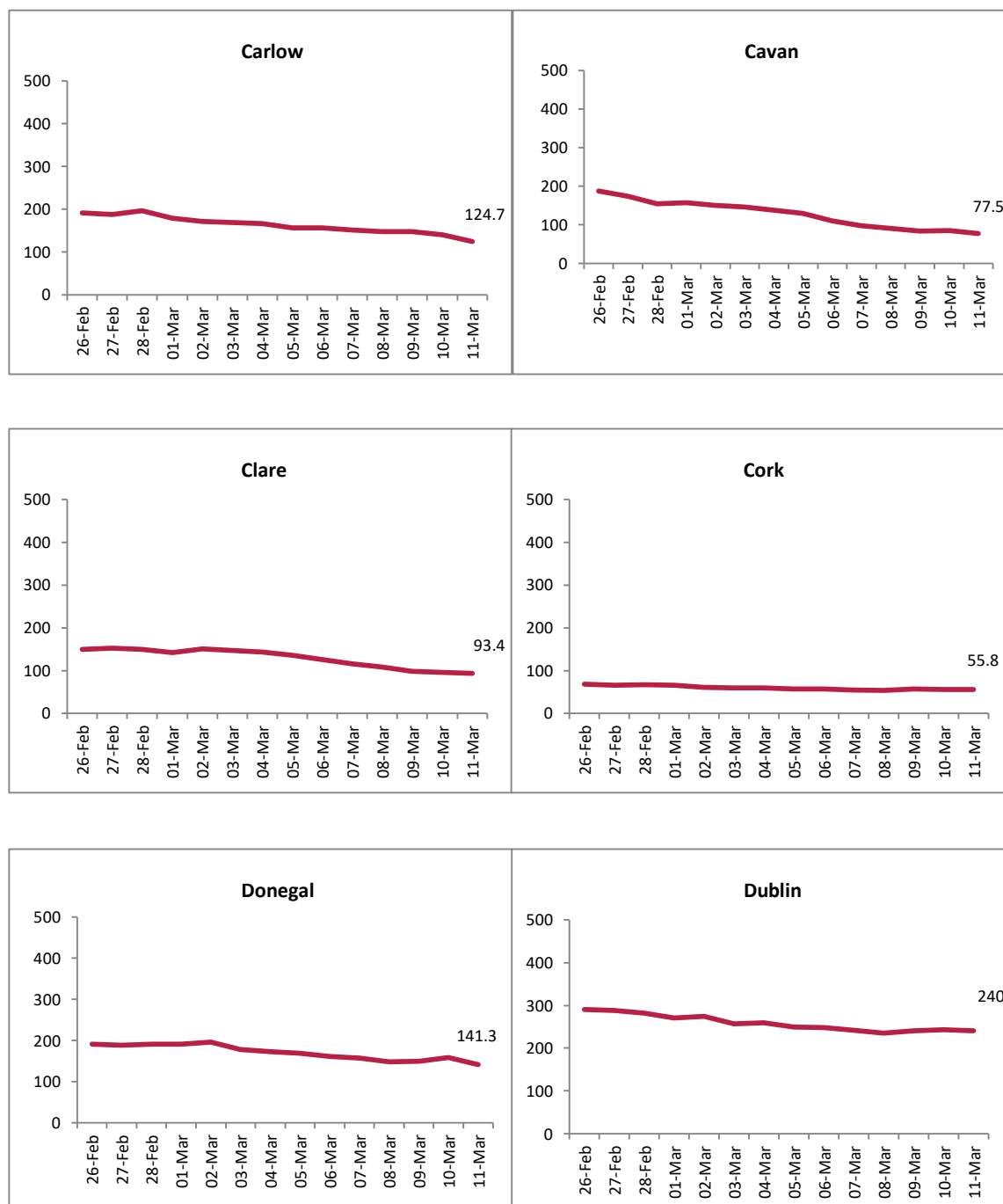
Travel related cases include cases who acquire COVID-19 infection outside of Ireland (imported cases) and cases who acquire COVID-19 infection directly from imported cases.

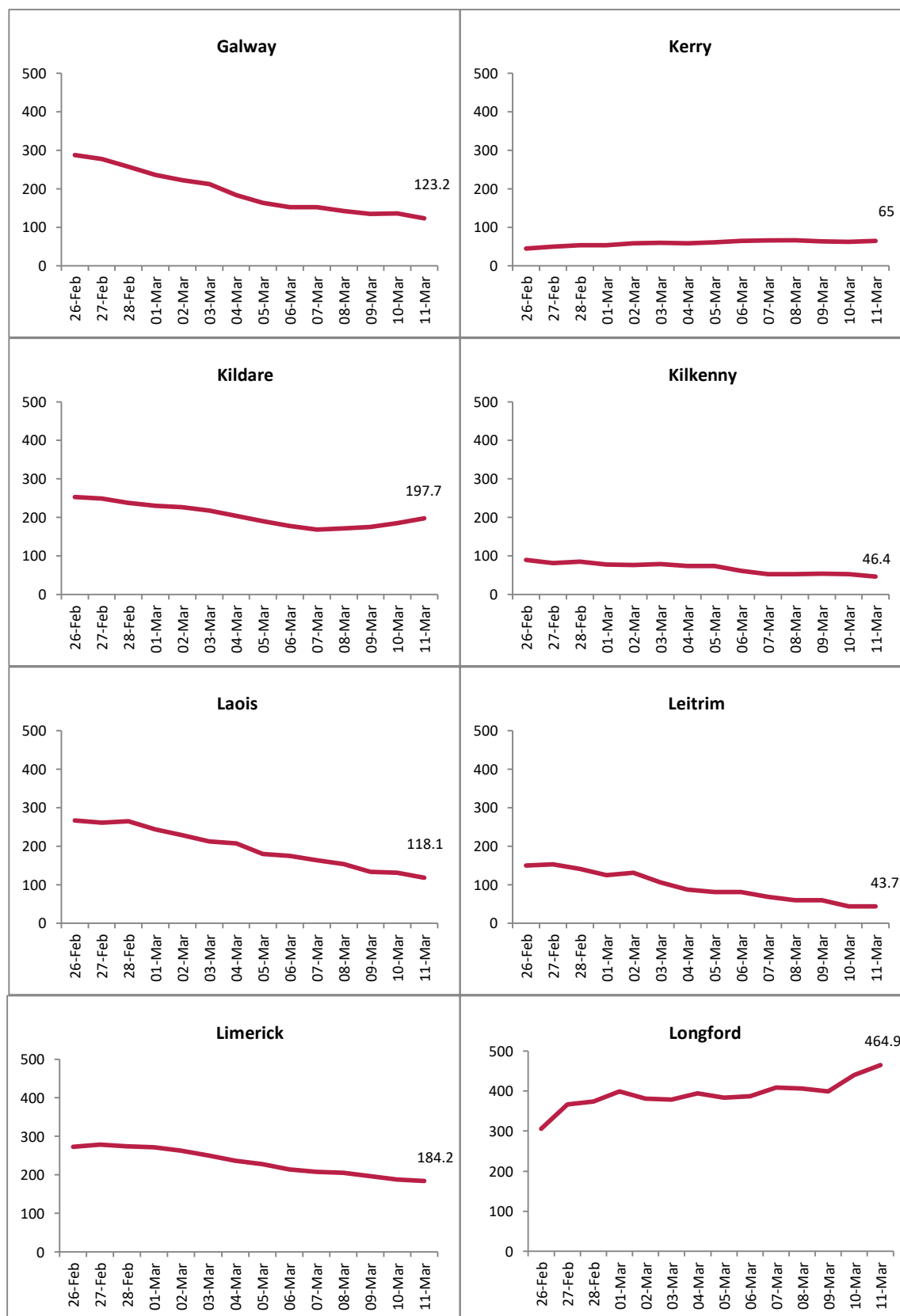
WHO definition of transmission classification is specified below:

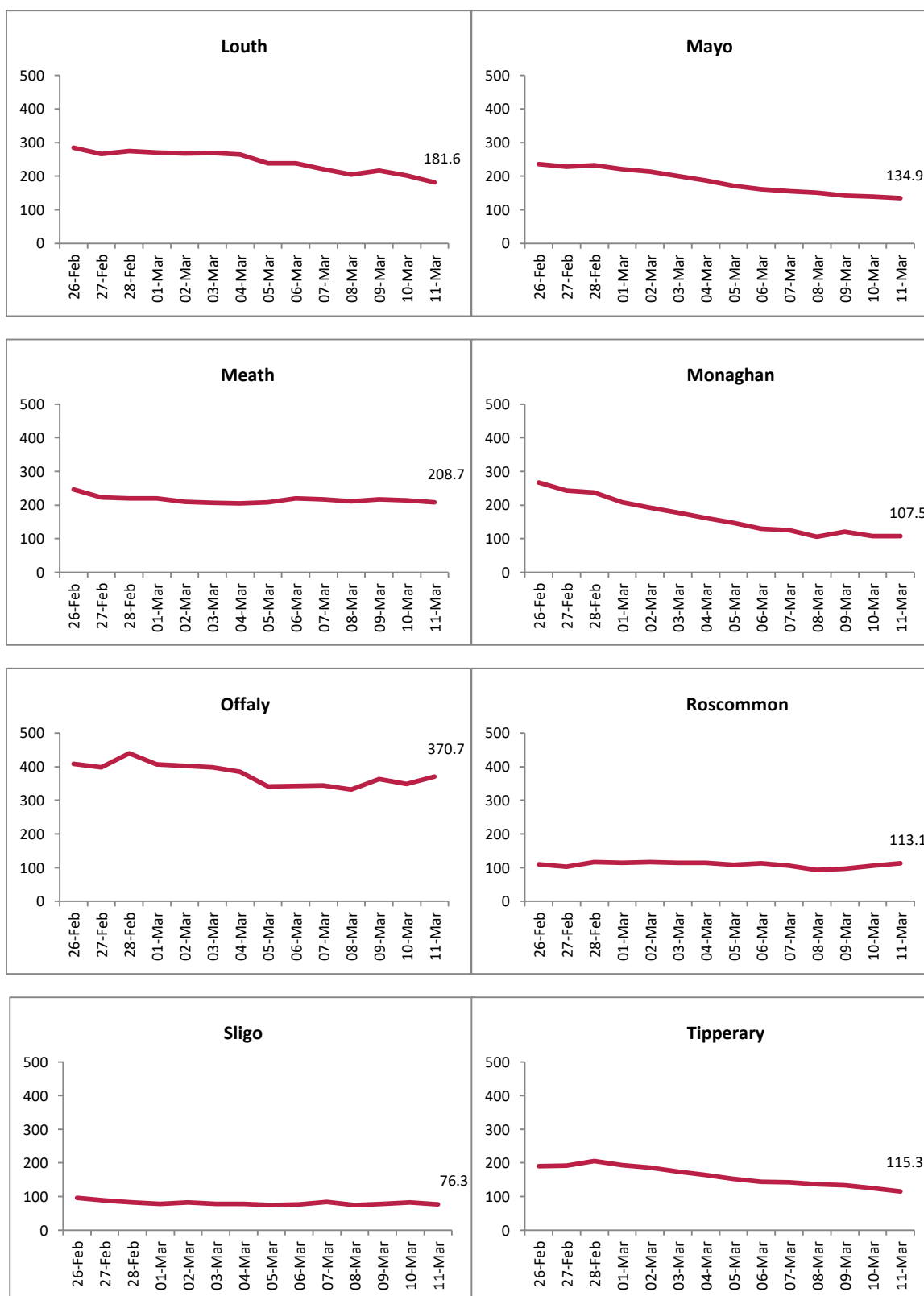
- Community transmission is evidenced by the inability to relate confirmed cases through chains of transmission for a large number of cases, or by increasing positive tests through routine screening of sentinel samples.
- Local transmission indicates locations where the source of infection is within the reporting location.
- Imported cases only indicates locations where all cases have been acquired outside the location of reporting.

Appendix 1

Figure A. 14 day cumulative incidence rates per 100,000 population of confirmed cases of COVID-19 by county (26/02/2021 to 11/03/2021)







Report prepared by Health Protection Surveillance Centre on 12/03/2021

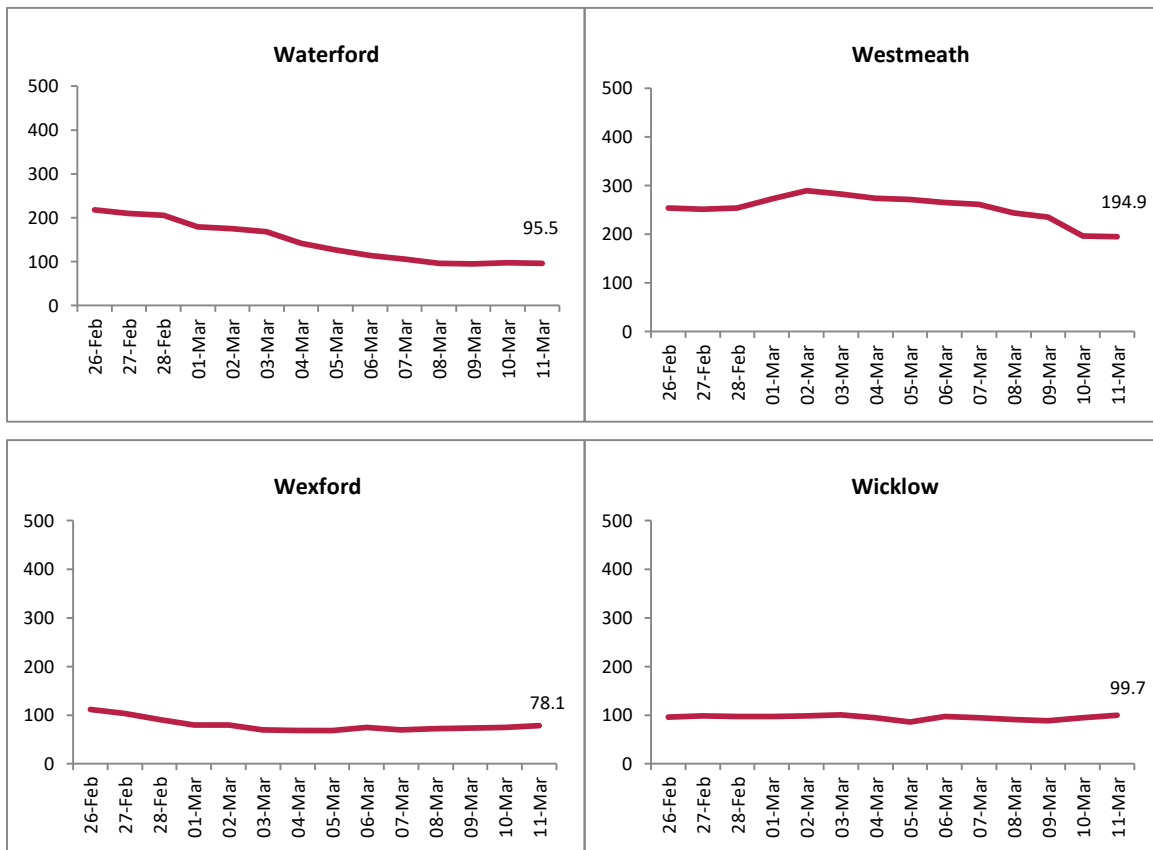


Figure B. 14 day cumulative incidence rates per 100,000 population of confirmed cases of COVID-19 by Dublin CCA (26/02/2021 to 11/03/2021)

