



Epidemiology of COVID-19 in Ireland - 14 day report

Report prepared by HPSC on 10/03/2021

Summary characteristics of confirmed COVID-19 cases notified in Ireland from 24/02/2021 up to midnight 09/03/2021

	Number	Percent
Total number of confirmed cases	7,739	
National incidence of confirmed cases per 100,000 population	162.52	
Number of cases hospitalised*	482	6.23
Number of cases admitted to ICU*	23	0.3
Number of deaths among confirmed cases	15	0.19
Case fatality ratio (CFR, %)	0.19	
National incidence of confirmed deaths per 100,000 population	0.32	
Number of cases** associated with clusters	1,527	19.73
Number of imported cases	30	0.39
Number of cases in healthcare workers	330	4.26
Males	3,896	50.34
Females	3,826	49.44
M:F ratio	1.02	
Median age (years)	32	
Mean age (years)	34	
Age range (years)	0 - 98	

* The number of cases hospitalised and admitted to ICU relate only to events notified in the last 14 days and do not include cases notified prior to this and admitted to hospital or ICU in the last 14 days

**Cases may be associated with outbreaks notified outside the timeframe of this report
24/02/2021 - 09/03/2021

Note: Data were extracted from Computerised Infectious Disease Reporting (CIDR) system at 07:45 on 10/03/2021 and are provisional and subject to ongoing review, validation and update. As a result, figures in this report may differ from previously published figures.

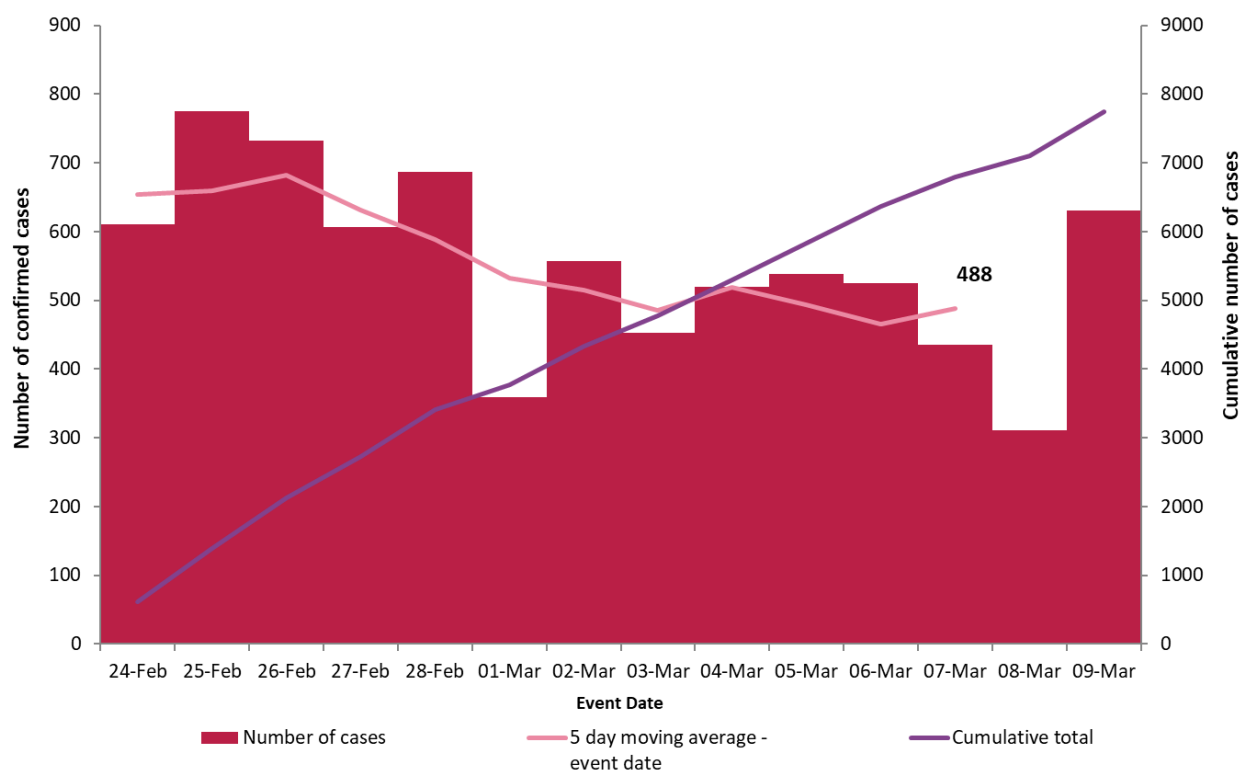


Figure 1. Daily number and cumulative number of confirmed cases of COVID-19, and 5-day moving average, by notification date (n=7,739)

Table 1: Characteristics of confirmed COVID-19 cases notified in Ireland from 24/02/2021 up to midnight on 09/03/2021

Characteristic		Number of cases	Percent
Total number of confirmed cases		7,739	100
Sex	Male:Female ratio	1.02	
	Male	3,896	50.34
	Female	3,826	49.44
	Unknown	17	0.22
Age	Median age (years)	32	
	Mean age (years)	34	
	Age range (years)	0 - 98	
	0-4 yrs	513	6.63
	5-12 yrs	687	8.88
	13-18 yrs	593	7.66
	19-24 yrs	1,061	13.71
	25-34 yrs	1,325	17.12
	35-44 yrs	1,198	15.48
	45-54 yrs	1,009	13.04
	55-64 yrs	662	8.55
	65-74 yrs	345	4.46
	75-84 yrs	223	2.88
	85+ yrs	121	1.56
	Unknown	2	0.03
Symptom status at time of test*	Yes	4,484	57.94
	No	1,559	20.14
	Unknown	1,696	21.91

*Symptom status is recorded at the time of test and is not updated, therefore a proportion of the asymptomatic cases may subsequently develop symptoms however this will not be captured in the data.

Table 2: Number of confirmed COVID-19 cases by community healthcare organisation (CHO) notified in Ireland from 24/02/2021 to midnight 09/03/2021

CHO Area	Number of confirmed cases	Incidence per 100,000 population
CHO1	446	114.0
CHO2	595	131.3
CHO3	582	151.2
CHO4	407	58.9
CHO5	483	94.6
CHO6	658	171.7
CHO7	1,102	155.7
CHO8	1,470	237.4
CHO9	1,993	320.7
Unknown	3	
Total	7,739	162.5

Table 3: Number of confirmed COVID-19 cases by county notified in Ireland from 24/02/2021 to midnight 09/03/2021

County	Number of confirmed cases	Incidence per 100,000 population	5 day moving average of confirmed cases (05/03/2021-09/03/2021)
Longford	162	396.3	8
Offaly	283	363.0	19
Dublin	3,242	240.6	205
Westmeath	208	234.3	8
Meath	424	217.4	30
Louth	278	215.7	15
Limerick	382	196.0	26
Kildare	388	174.4	29
Donegal	238	149.5	12
Carlow	85	149.3	6
Mayo	186	142.5	13
Laois	115	135.8	4
Galway	348	134.9	17
Tipperary	206	129.1	14
Monaghan	74	120.5	4
Clare	116	97.6	4
Waterford	112	96.4	10
Roscommon	61	94.5	2
Wicklow	126	88.5	11
Cavan	64	84.0	3
Sligo	51	77.8	4
Wexford	110	73.5	10
Kerry	96	65.0	7
Leitrim	19	59.3	0
Cork	311	57.3	21
Kilkenny	54	54.4	4
Total	7,739	162.5	488

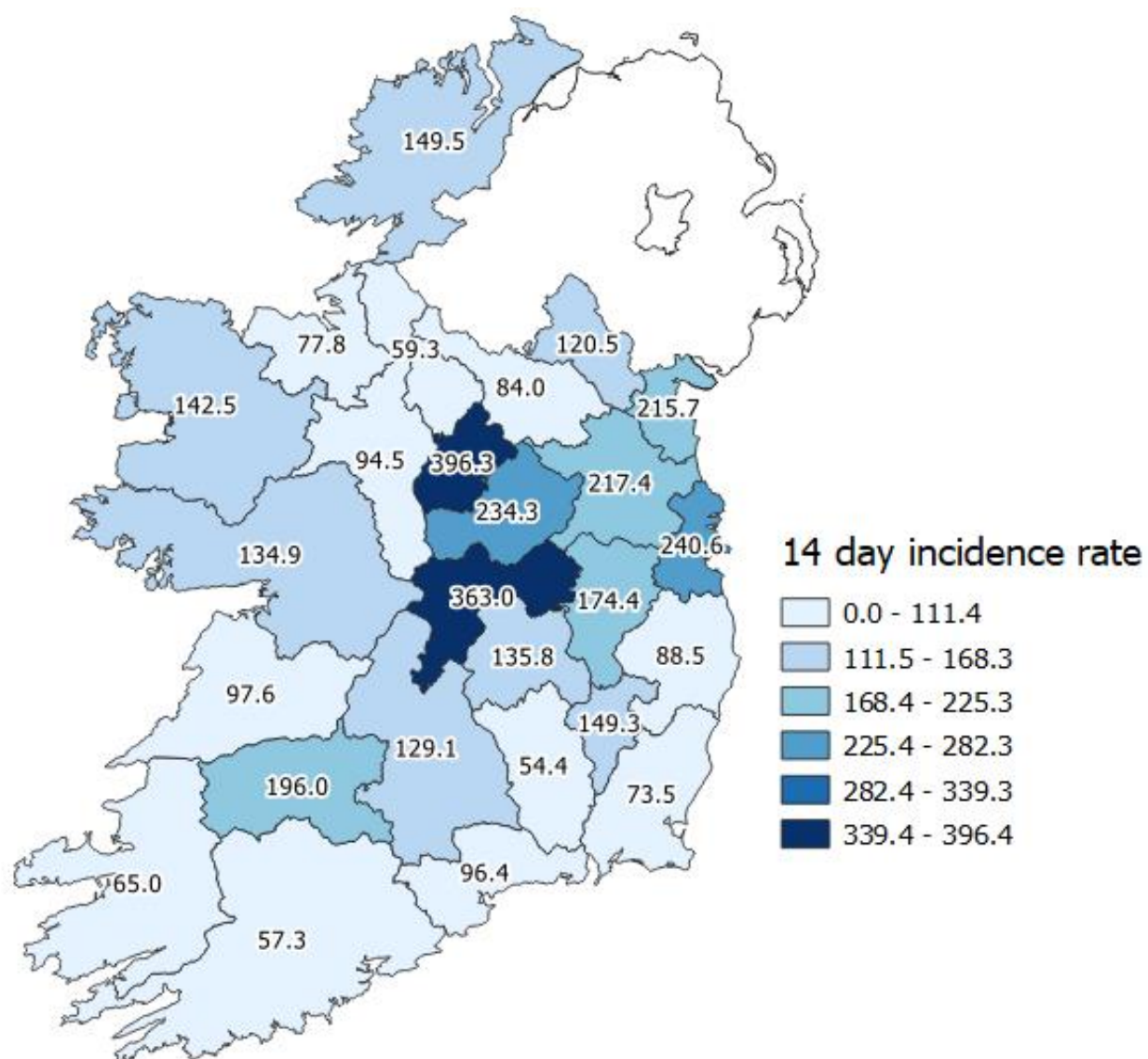


Figure 2: Cumulative 14-day incidence rates of confirmed COVID-19 cases per 100,000 population by county notified in Ireland between 24/02/2021 and 09/03/2021

Please do not directly compare county shades to previous maps. The categories listed will change as the number of cases change, which may result in changes to the map shading.

Table 4: Number and incidence of confirmed COVID-19 cases by Dublin Local Health Offices* (LHOs) notified in Ireland with a notification date between 24/02/2021 and 09/03/2021

CCA	Local Health Office	Number of cases in past 14 days based on notification date	14 day incidence rates based on notification dates
CCA1	Dublin South	145	106.6
CCA2	Dublin South East	392	316.9
CCA3	Dublin South City	123	82.0
CCA4	Dublin South West	228	141.7
CCA5	Dublin West	359	231.1
CCA6	Dublin North West	630	303.4
CCA7	Dublin North Central	884	571.9
CCA8	Dublin North	479	184.8
	Unknown	2	
	Dublin	3,242	240.6

Note: Local health offices (LHOs) came into operation on 1st September 2005, replacing Community Care Areas (CCAs). LHO population denominators are used in this report rather than CCA population denominators. The LHO rates were calculated using Census 2016 LHO denominator data extracted from the HSE Health Atlas and are not a direct match to the corresponding CCAs.

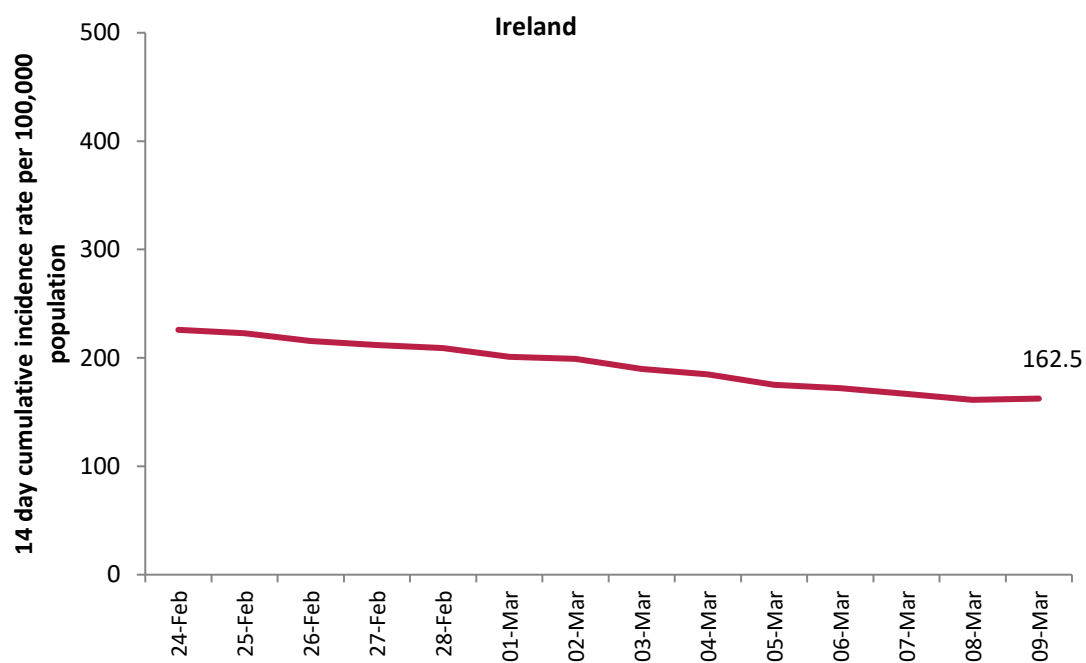


Figure 3: 14 day cumulative incidence rates per 100,000 population of confirmed cases of COVID-19 in Ireland* (24/02/2021 to 09/03/2021)

*14 day incidence rates per 100,000 populations of confirmed cases of COVID-19 for individual counties can be found in appendix 1 of this report

Table 5: Number of confirmed COVID-19 cases by most likely transmission source notified from 24/02/2021 to midnight 09/03/2021

Most likely transmission source	Number of cases	Percent
Travel related*	98	1.27%
Close contact with a known confirmed case	4021	51.96%
Healthcare setting acquired: patient	155	2.00%
Healthcare setting acquired: staff	109	1.41%
Community transmission	1472	19.02%
Under investigation	1884	24.34%
Total	7739	100.00%

*Travel related cases include cases who acquire COVID-19 infection outside of Ireland (imported cases) and cases who acquire COVID-19 infection directly from imported cases

Table 6: Cumulative number of confirmed cases of COVID-19 notified in Ireland from 24/02/2021 to midnight 09/03/2021 by age group, hospitalisation and ICU admission*

Age Group (years)	Number of cases (n)	Cases hospitalised (n)	Cases hospitalised (%)	Cases admitted to ICU (n)	Cases admitted to ICU (%)
0-4 yrs	513	21	4.36	0	0
5-12 yrs	687	14	2.90	0	0
13-18 yrs	593	19	3.94	0	0
19-24 yrs	1061	64	13.28	0	0
25-34 yrs	1325	42	8.71	<5	
35-44 yrs	1198	43	8.92	<5	
45-54 yrs	1009	59	12.24	8	34.78
55-64 yrs	662	51	10.58	6	26.09
65-74 yrs	345	52	10.79	<5	
75-84 yrs	223	74	15.35	<5	
85+ yrs	121	42	8.71	0	0
Unknown	2	1	0.21	0	0
Total	7,739	482	100	23	100

* The number of cases hospitalised and admitted to ICU relate only to events notified in the last 14 days and do not include cases notified prior to this and admitted to hospital or ICU in the last 14 days

Deaths among COVID-19 cases

Table 7: Summary of deaths in all COVID-19 cases notified in Ireland from 24/02/2021 up to midnight 09/03/2021

	Number	Percent
Total number of deaths	18	
Confirmed	15	83.33
Possible	3	16.67
Total number of cases hospitalised	15	83.33
Total number of male cases	10	55.56
M:F ratio	1.25	
Median age (years)	81	
Mean age (years)	74	
Age range (years)	0 - 94	

Table 8: Number of deaths in all COVID-19 cases by sex and age group notified in Ireland from 24/02/2021 up to midnight 09/03/2021

Age group (years)	Female	Male	Total	Percent
<65 yrs	*	*	5	27.78
65-74 yrs	*	*	1	5.56
75-84 yrs	*	*	6	33.33
85+ yrs	*	*	6	33.33
Total	8	10	18	100
Percent	44.44	55.56		

*One or both values <5

Acknowledgements

Sincere thanks are extended to all those who are participating in the collection of data and reporting of data used in these reports. This includes the HSE COVID-19 Contact Management Programme (CMP), staff in ICU units, notifying clinicians, laboratory staff, public health doctors, nurses, surveillance scientists, microbiologists and administrative staff.

Report prepared by COVID-19 Epidemiology Team, HPSC

Technical Notes

1. Data Source

Data are based on statutory notifications and were extracted from Computerised Infectious Disease Reporting (CIDR) system. Data are provisional and subject to ongoing review, validation and update. As a result, figures in this report may differ from previously published figures.

2. Population data

Population data were taken from Census 2016. Data were aggregated into the following age groups for the analysis: 0-4 years, 5-12 years, 13-18 years, 19-24 years, 25-34 years, 35-44 years, 45-54 years, 55-64 years, 65-74 years, 75-84 years and ≥ 85 years.

3. Transmission classification

Transmission classification is based on country of infection as well as enhanced exposure data (international travel; close contact of a case) recorded in CIDR. Transmission is classified as 'unknown' due to incomplete data on CIDR.

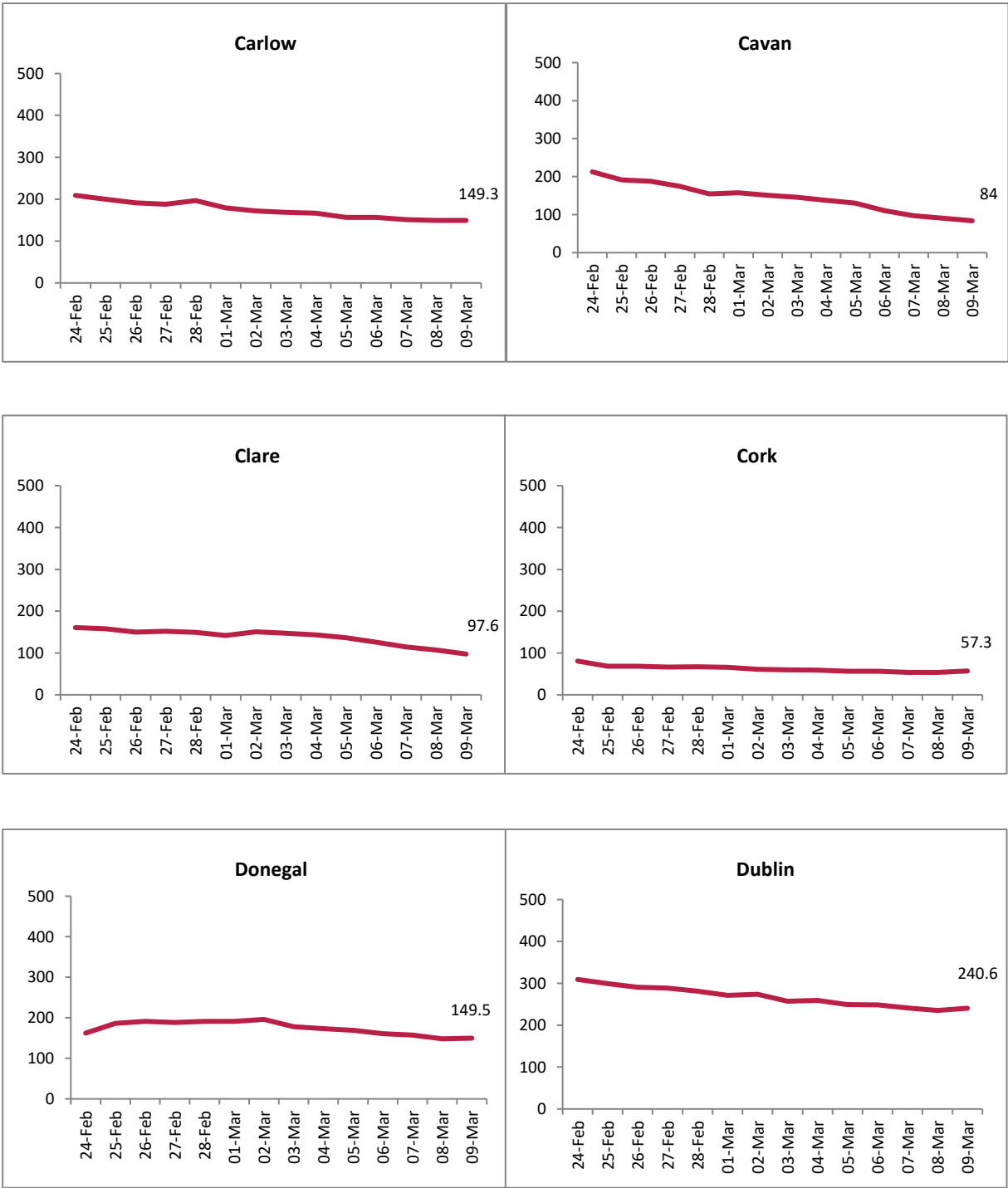
Travel related cases include cases who acquire COVID-19 infection outside of Ireland (imported cases) and cases who acquire COVID-19 infection directly from imported cases.

WHO definition of transmission classification is specified below:

- Community transmission is evidenced by the inability to relate confirmed cases through chains of transmission for a large number of cases, or by increasing positive tests through routine screening of sentinel samples.
- Local transmission indicates locations where the source of infection is within the reporting location.
- Imported cases only indicates locations where all cases have been acquired outside the location of reporting.

Appendix 1

Figure A. 14 day cumulative incidence rates per 100,000 population of confirmed cases of COVID-19 by county (24/02/2021 to 09/03/2021)



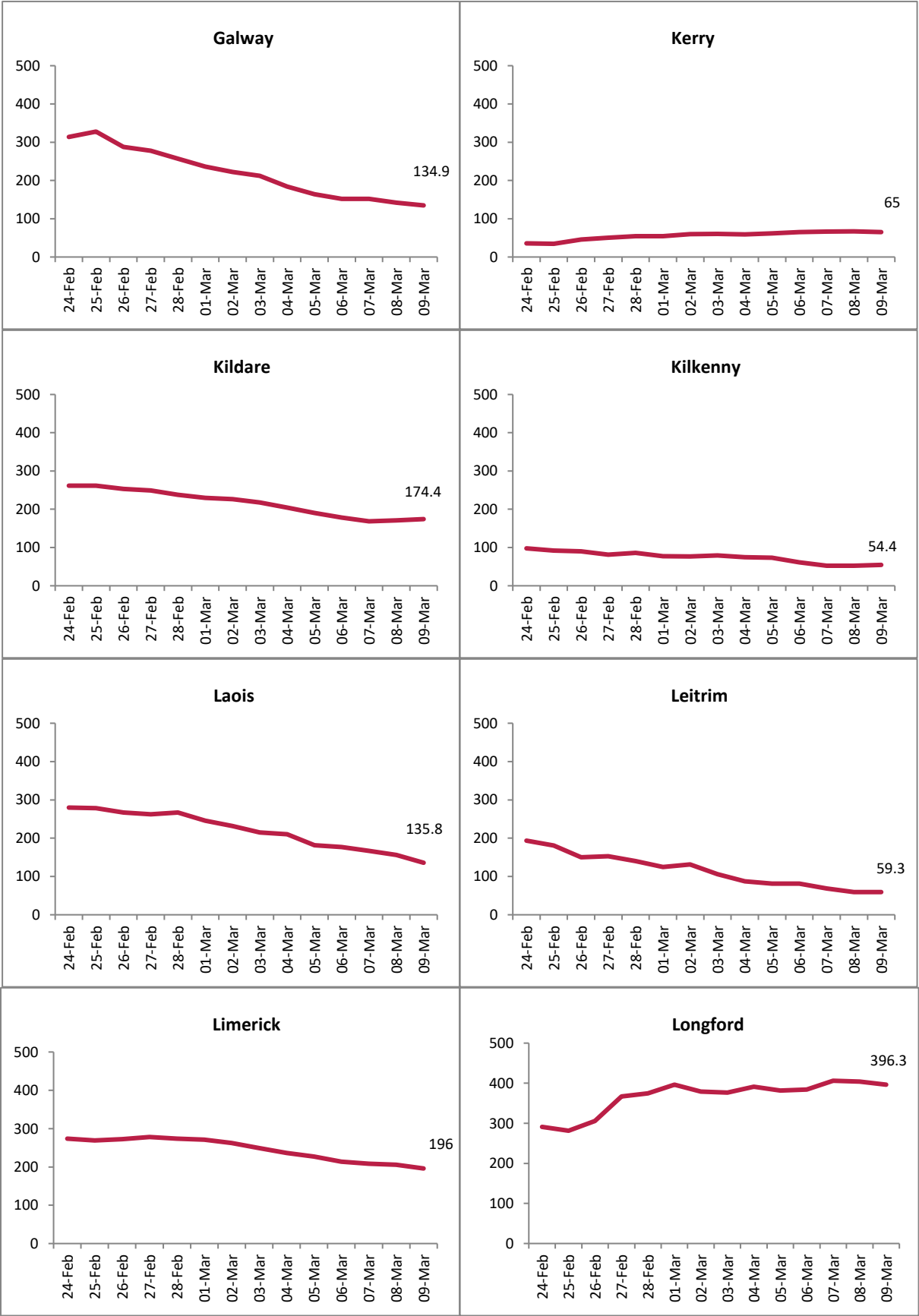






Figure B. 14 day cumulative incidence rates per 100,000 population of confirmed cases of COVID-19 by Dublin CCA (24/02/2021 to 09/03/2021)

