



Epidemiology of COVID-19 in Ireland - 14 day report

Report prepared by HPSC on 09/03/2021

Summary characteristics of confirmed COVID-19 cases notified in Ireland from 23/02/2021 up to midnight 08/03/2021

	Number	Percent
Total number of confirmed cases	7,683	
National incidence of confirmed cases per 100,000 population	161.34	
Number of cases hospitalised*	479	6.23
Number of cases admitted to ICU*	22	0.29
Number of deaths among confirmed cases	15	0.2
Case fatality ratio (CFR, %)	0.2	
National incidence of confirmed deaths per 100,000 population	0.32	
Number of cases** associated with clusters	1,477	19.22
Number of imported cases	17	0.22
Number of cases in healthcare workers	345	4.49
Males	3,867	50.33
Females	3,803	49.5
M:F ratio	1.02	
Median age (years)	33	
Mean age (years)	35	
Age range (years)	0 - 99	

* The number of cases hospitalised and admitted to ICU relate only to events notified in the last 14 days and do not include cases notified prior to this and admitted to hospital or ICU in the last 14 days

**Cases may be associated with outbreaks notified outside the timeframe of this report
23/02/2021 - 08/03/2021

Note: Data were extracted from Computerised Infectious Disease Reporting (CIDR) system at 08:05 on 09/03/2021 and are provisional and subject to ongoing review, validation and update. As a result, figures in this report may differ from previously published figures.

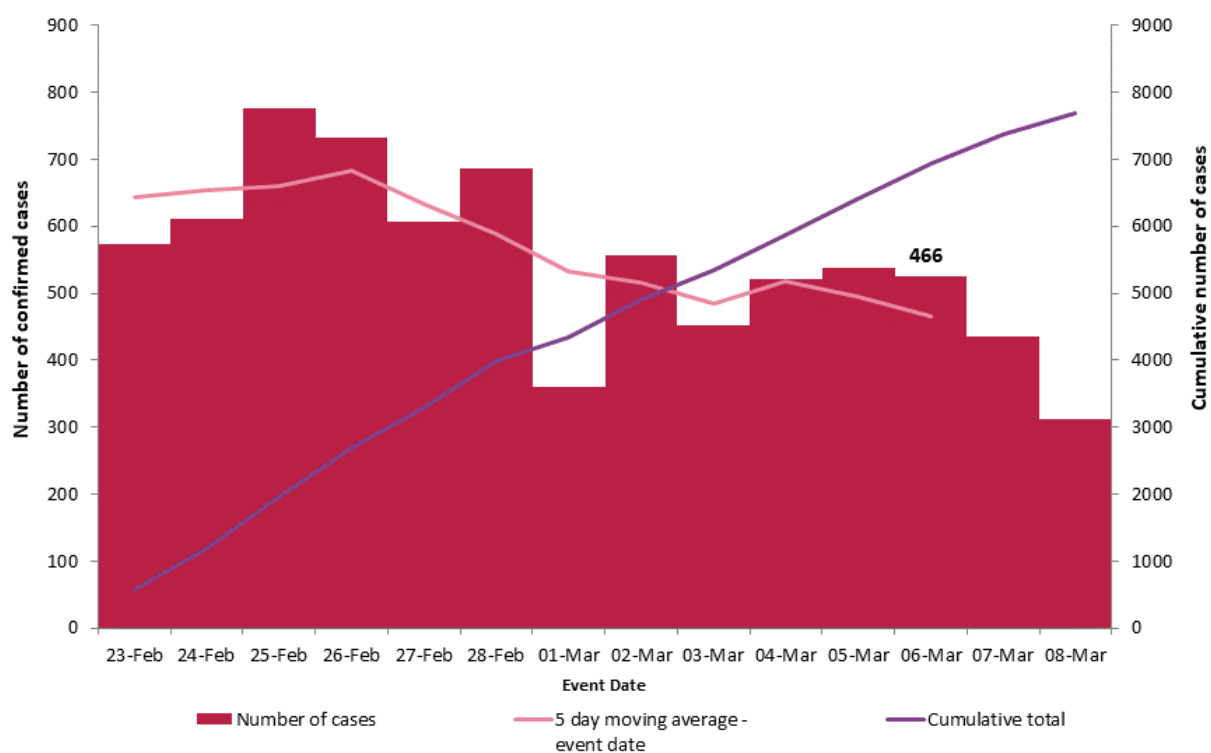


Figure 1. Daily number and cumulative number of confirmed cases of COVID-19, and 5-day moving average, by notification date (n=7,683)

Table 1: Characteristics of confirmed COVID-19 cases notified in Ireland from 23/02/2021 up to midnight on 08/03/2021

Characteristic		Number of cases	Percent
Total number of confirmed cases		7,683	100
Sex	Male:Female ratio	1.02	
	Male	3,867	50.33
	Female	3,803	49.5
	Unknown	13	0.17
Age	Median age (years)	33	
	Mean age (years)	35	
	Age range (years)	0 - 99	
	0-4 yrs	497	6.47
	5-12 yrs	668	8.69
	13-18 yrs	564	7.34
	19-24 yrs	1,064	13.85
	25-34 yrs	1,297	16.88
	35-44 yrs	1,206	15.7
	45-54 yrs	999	13
	55-64 yrs	674	8.77
	65-74 yrs	347	4.52
	75-84 yrs	232	3.02
	85+ yrs	133	1.73
	Unknown	2	0.03
Symptom status at time of test*	Yes	4,676	60.86
	No	1,567	20.4
	Unknown	1,440	18.74

*Symptom status is recorded at the time of test and is not updated, therefore a proportion of the asymptomatic cases may subsequently develop symptoms however this will not be captured in the data.

Table 2: Number of confirmed COVID-19 cases by community healthcare organisation (CHO) notified in Ireland from 23/02/2021 to midnight 08/03/2021

CHO Area	Number of confirmed cases	Incidence per 100,000 population
CHO1	438	111.9
CHO2	623	137.5
CHO3	615	159.7
CHO4	390	56.5
CHO5	487	95.4
CHO6	649	169.4
CHO7	1,090	154.0
CHO8	1,450	234.1
CHO9	1,940	312.2
Unknown	1	
Total	7,683	161.3

Table 3: Number of confirmed COVID-19 cases by county notified in Ireland from 23/02/2021 to midnight 08/03/2021

County	Number of confirmed cases	Incidence per 100,000 population	5 day moving average of confirmed cases (04/03/2021-08/03/2021)
Longford	165	403.7	9
Offaly	258	330.9	15
Westmeath	216	243.3	9
Dublin	3,170	235.3	211
Meath	415	212.8	27
Limerick	401	205.7	21
Louth	263	204.1	14
Kildare	381	171.2	24
Laois	133	157.0	6
Mayo	197	150.9	12
Carlow	85	149.3	4
Donegal	236	148.2	11
Galway	367	142.2	16
Tipperary	215	134.8	13
Clare	129	108.6	5
Monaghan	65	105.9	4
Waterford	113	97.3	6
Roscommon	59	91.4	3
Cavan	69	90.6	3
Wicklow	129	90.6	11
Sligo	49	74.8	4
Wexford	107	71.5	8
Kerry	99	67.0	6
Leitrim	19	59.3	0
Cork	291	53.6	18
Kilkenny	52	52.4	3
Total	7,683	161.3	466

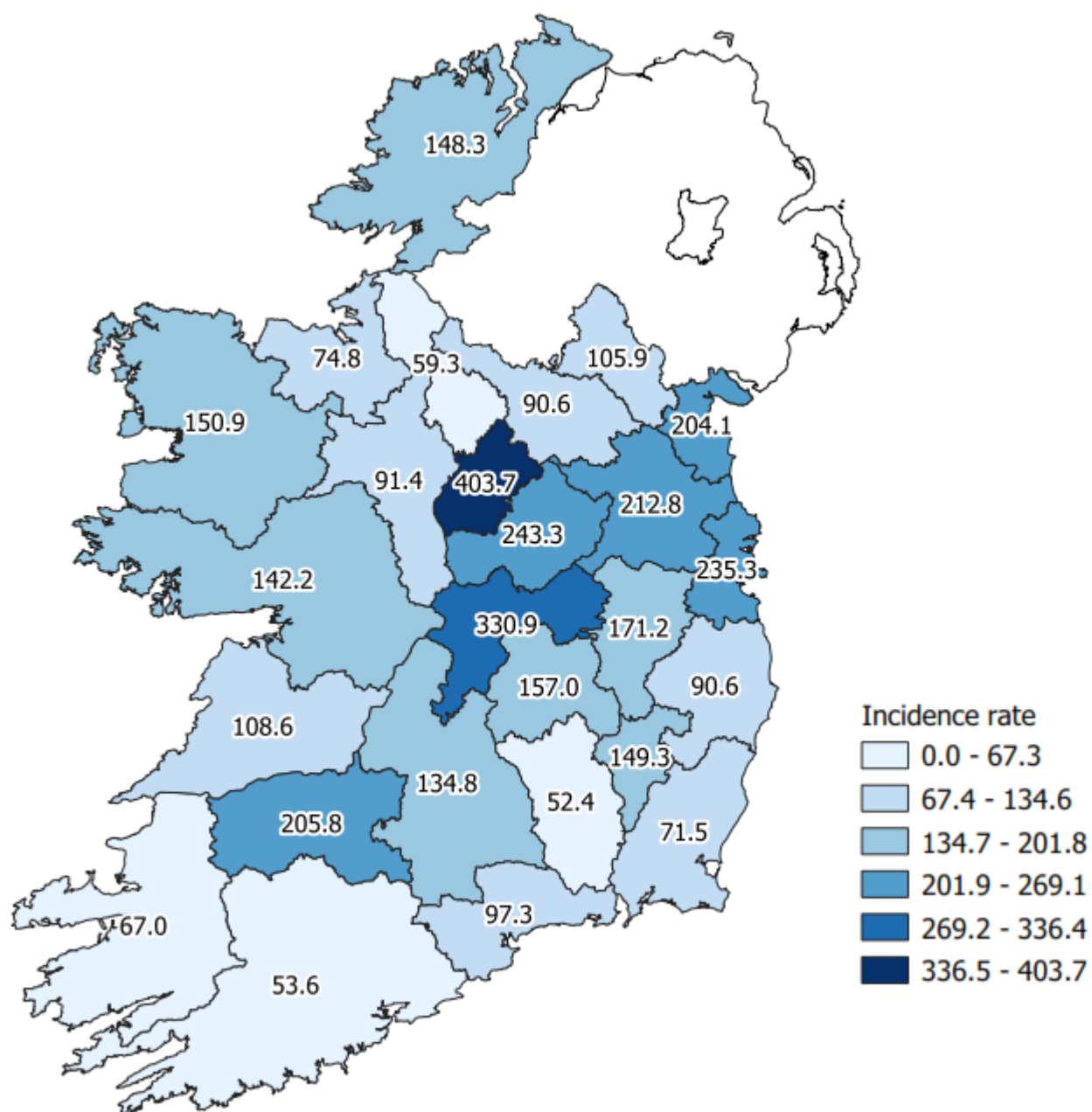


Figure 2: Cumulative 14-day incidence rates of confirmed COVID-19 cases per 100,000 population by county notified in Ireland between 23/02/2021 and 08/03/2021

Please do not directly compare county shades to previous maps. The categories listed will change as the number of cases change, which may result in changes to the map shading.

Table 4: Number and incidence of confirmed COVID-19 cases by Dublin Local Health Offices* (LHOs) notified in Ireland with a notification date between 23/02/2021 and 08/03/2021

CCA	Local Health Office	Number of cases in past 14 days based on notification date	14 day incidence rates based on notification dates
CCA1	Dublin South	142	104.4
CCA2	Dublin South East	383	309.6
CCA3	Dublin South City	121	80.7
CCA4	Dublin South West	231	143.6
CCA5	Dublin West	353	227.2
CCA6	Dublin North West	620	298.6
CCA7	Dublin North Central	869	562.2
CCA8	Dublin North	451	174.0
Dublin		3,170	235.3

Note: Local health offices (LHOs) came into operation on 1st September 2005, replacing Community Care Areas (CCAs). LHO population denominators are used in this report rather than CCA population denominators. The LHO rates were calculated using Census 2016 LHO denominator data extracted from the HSE Health Atlas and are not a direct match to the corresponding CCAs.

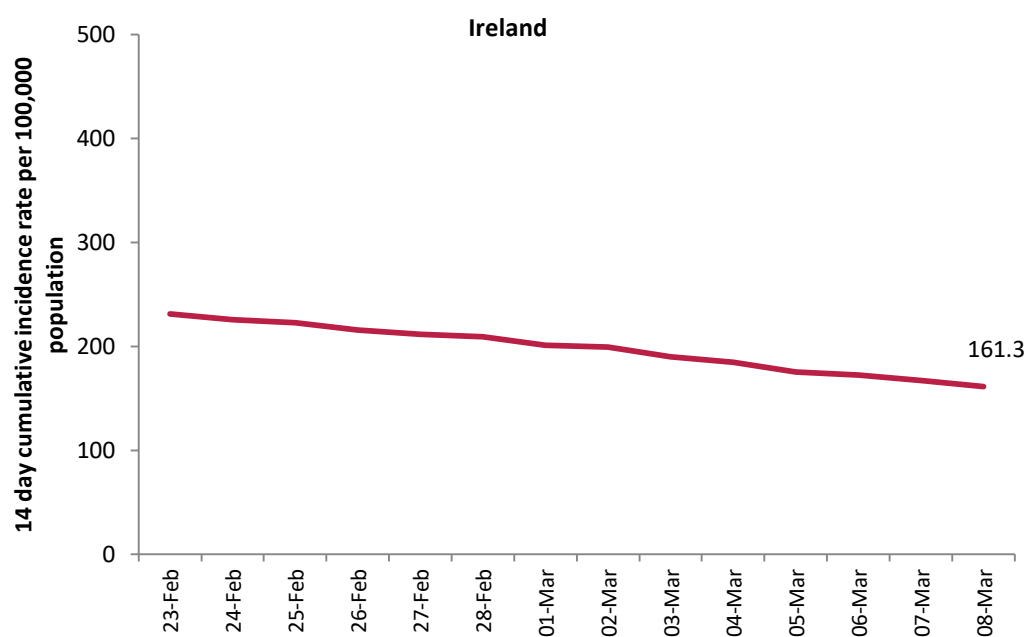


Figure 3: 14 day cumulative incidence rates per 100,000 population of confirmed cases of COVID-19 in Ireland* (23/02/2021 to 08/03/2021)

*14 day incidence rates per 100,000 populations of confirmed cases of COVID-19 for individual counties can be found in appendix 1 of this report

Table 5: Number of confirmed COVID-19 cases by most likely transmission source notified from 23/02/2021 to midnight 08/03/2021

Most likely transmission source	Number of cases	Percent
Travel related	87	1.13%
Close contact with a known confirmed case	4,124	53.68%
Healthcare setting acquired: patient	165	2.15%
Healthcare setting acquired: staff	123	1.60%
Community transmission	1,540	20.04%
Under investigation	1,644	21.40%
Total	7,683	100.00%

*Travel related cases include cases who acquire COVID-19 infection outside of Ireland (imported cases) and cases who acquire COVID-19 infection directly from imported cases

Table 6: Cumulative number of confirmed cases of COVID-19 notified in Ireland from 23/02/2021 to midnight 08/03/2021 by age group, hospitalisation and ICU admission*

Age Group (years)	Number of cases (n)	Cases hospitalised (n)	Cases hospitalised (%)	Cases admitted to ICU (n)	Cases admitted to ICU (%)
0-4 yrs	497	20	4.18	0	0.00
5-12 yrs	668	16	3.34	0	0.00
13-18 yrs	564	19	3.97	0	0.00
19-24 yrs	1064	52	10.86	0	0.00
25-34 yrs	1297	42	8.77	<5	
35-44 yrs	1206	46	9.60	<5	
45-54 yrs	999	63	13.15	9	40.91
55-64 yrs	674	51	10.65	5	22.73
65-74 yrs	347	55	11.48	<5	
75-84 yrs	232	71	14.82	<5	
85+ yrs	133	43	8.98	0	0.00
Unknown	2	1	0.21	0	0.00
Total	7,683	479	100.00	22	100.00

* The number of cases hospitalised and admitted to ICU relate only to events notified in the last 14 days and do not include cases notified prior to this and admitted to hospital or ICU in the last 14 days

Deaths among COVID-19 cases

Table 7: Summary of deaths in all COVID-19 cases notified in Ireland from 23/02/2021 up to midnight 08/03/2021

	Number	Percent
Total number of deaths	17	
Confirmed	15	88.24
Possible	2	11.76
Total number of cases hospitalised	13	76.47
Total number of male cases	8	47.06
M:F ratio	0.89	
Median age (years)	80	
Mean age (years)	73	
Age range (years)	0 - 93	

Table 8: Number of deaths in all COVID-19 cases by sex and age group notified in Ireland from 23/02/2021 up to midnight 08/03/2021

Age group (years)	Female	Male	Total	Percent
<65 yrs	*	*	5	29.41
65-84 yrs	*	*	6	35.29
85+ yrs	*	*	6	35.29
Total	9	8	17	100
Percent	52.94	47.06		

* One or both values <5

Acknowledgements

Sincere thanks are extended to all those who are participating in the collection of data and reporting of data used in these reports. This includes the HSE COVID-19 Contact Management Programme (CMP), staff in ICU units, notifying clinicians, laboratory staff, public health doctors, nurses, surveillance scientists, microbiologists and administrative staff.

Report prepared by COVID-19 Epidemiology Team, HPSC

Technical Notes

1. Data Source

Data are based on statutory notifications and were extracted from Computerised Infectious Disease Reporting (CIDR) system. Data are provisional and subject to ongoing review, validation and update. As a result, figures in this report may differ from previously published figures.

2. Population data

Population data were taken from Census 2016. Data were aggregated into the following age groups for the analysis: 0-4 years, 5-12 years, 13-18 years, 19-24 years, 25-34 years, 35-44 years, 45-54 years, 55-64 years, 65-74 years, 75-84 years and ≥ 85 years.

3. Transmission classification

Transmission classification is based on country of infection as well as enhanced exposure data (international travel; close contact of a case) recorded in CIDR. Transmission is classified as 'unknown' due to incomplete data on CIDR.

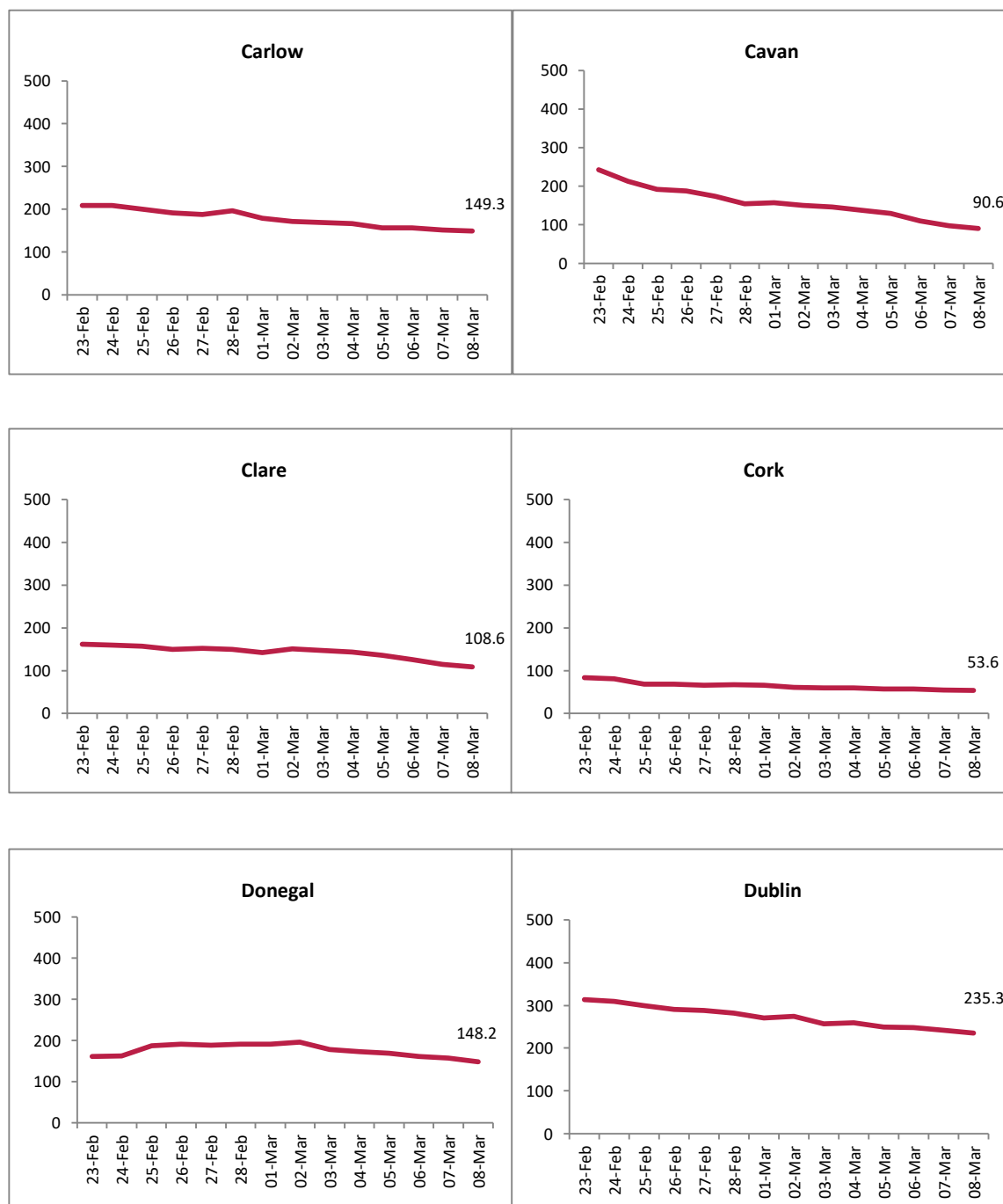
Travel related cases include cases who acquire COVID-19 infection outside of Ireland (imported cases) and cases who acquire COVID-19 infection directly from imported cases.

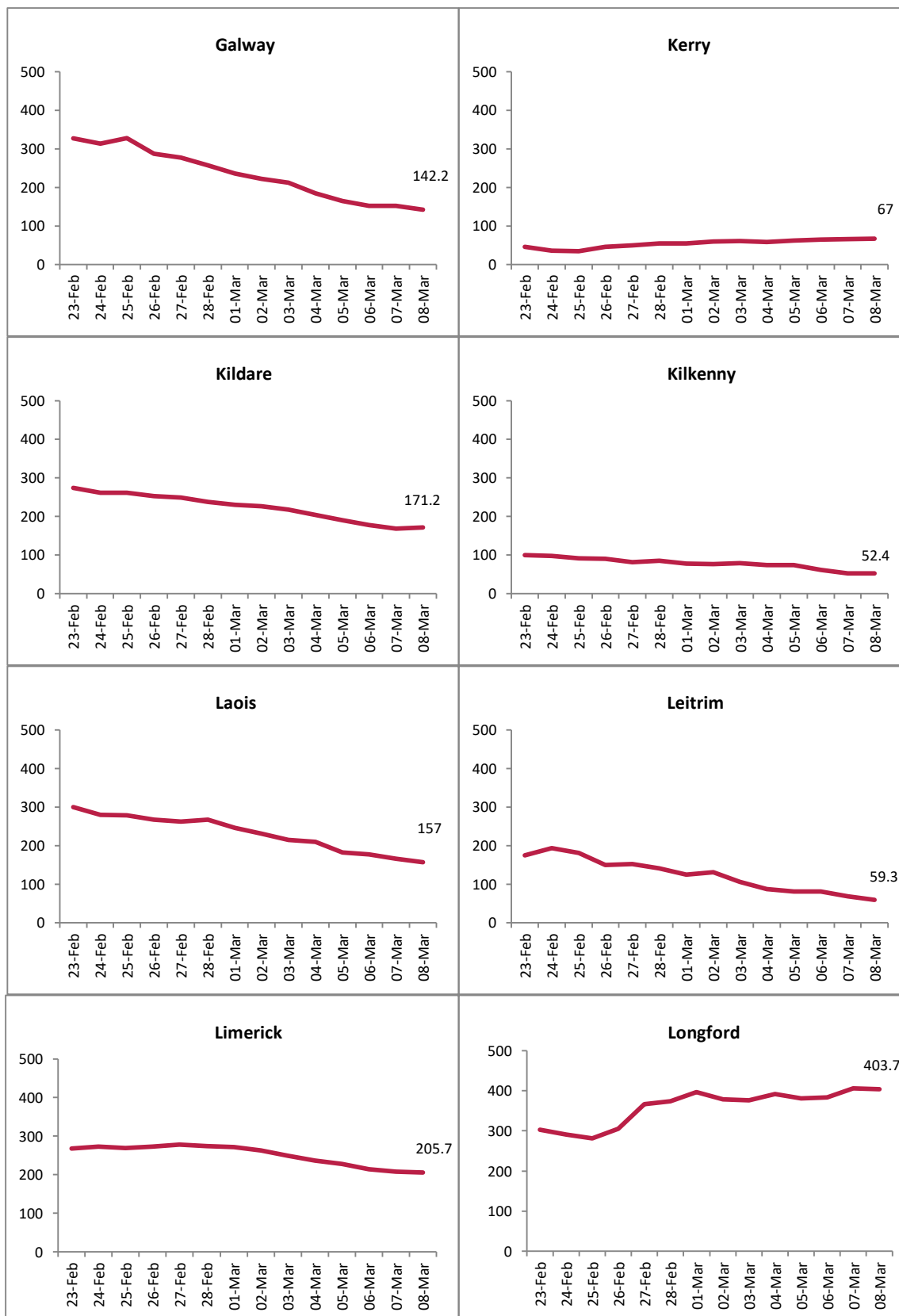
WHO definition of transmission classification is specified below:

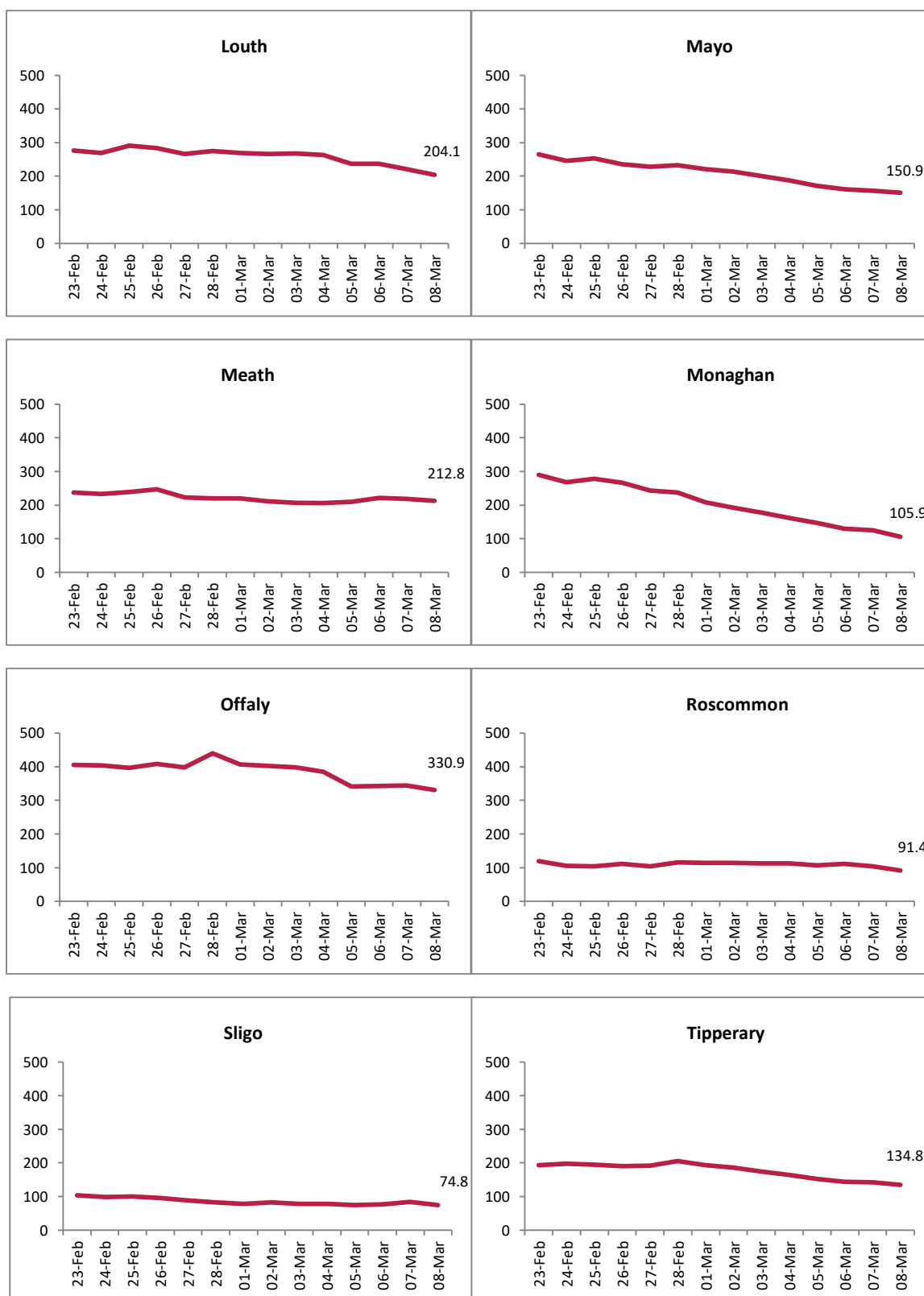
- Community transmission is evidenced by the inability to relate confirmed cases through chains of transmission for a large number of cases, or by increasing positive tests through routine screening of sentinel samples.
- Local transmission indicates locations where the source of infection is within the reporting location.
- Imported cases only indicates locations where all cases have been acquired outside the location of reporting.

Appendix 1

Figure A. 14 day cumulative incidence rates per 100,000 population of confirmed cases of COVID-19 by county (23/02/2021 to 08/03/2021)







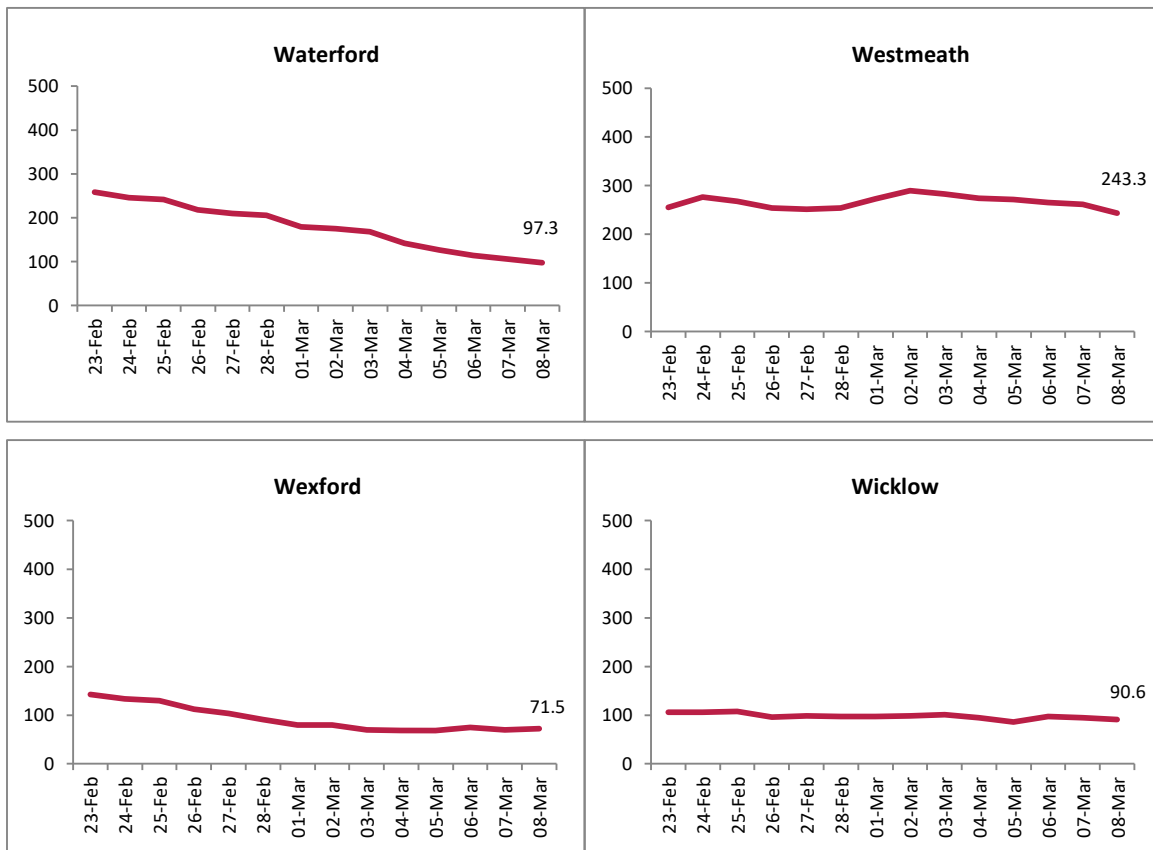
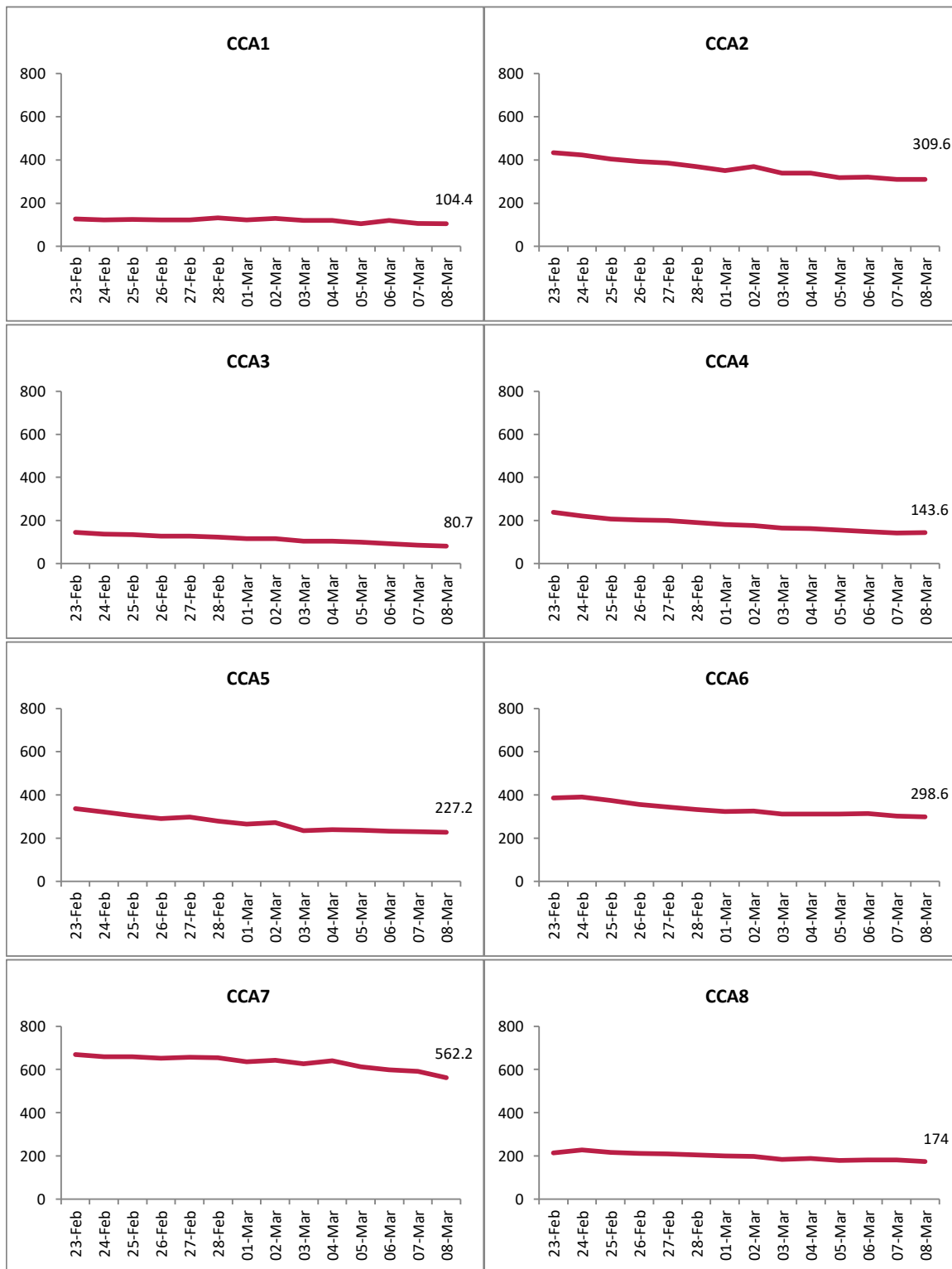


Figure B. 14 day cumulative incidence rates per 100,000 population of confirmed cases of COVID-19 by Dublin CCA (23/02/2021 to 08/03/2021)



Report prepared by Health Protection Surveillance Centre on 09/03/2021