



Epidemiology of COVID-19 in Ireland - 14 day report

Report prepared by HPSC on 01/03/2021

Summary characteristics of confirmed COVID-19 cases notified in Ireland from 15/02/2021 up to midnight 28/02/2021

	Number	Percent
Total number of confirmed cases	9,964	
National incidence of confirmed cases per 100,000 population	209.25	
Number of cases hospitalised*	673	6.75
Number of cases admitted to ICU*	26	0.26
Number of deaths among confirmed cases	36	0.36
Case fatality ratio (CFR, %)	0.36	
National incidence of confirmed deaths per 100,000 population	0.76	
Number of cases** associated with clusters	1,463	14.68
Number of imported cases	14	0.14
Number of cases in healthcare workers	490	4.92
Males	4,966	49.84
Females	4,982	50
M:F ratio	1	
Median age (years)	33	
Mean age (years)	35	
Age range (years)	0 - 100	

* The number of cases hospitalised and admitted to ICU relate only to events notified in the last 14 days and do not include cases notified prior to this and admitted to hospital or ICU in the last 14 days

**Cases may be associated with outbreaks notified outside the timeframe of this report
15/02/2021 - 28/02/2021

Note: Data were extracted from Computerised Infectious Disease Reporting (CIDR) system at 08:14 on 01/03/2021 and are provisional and subject to ongoing review, validation and update. As a result, figures in this report may differ from previously published figures.

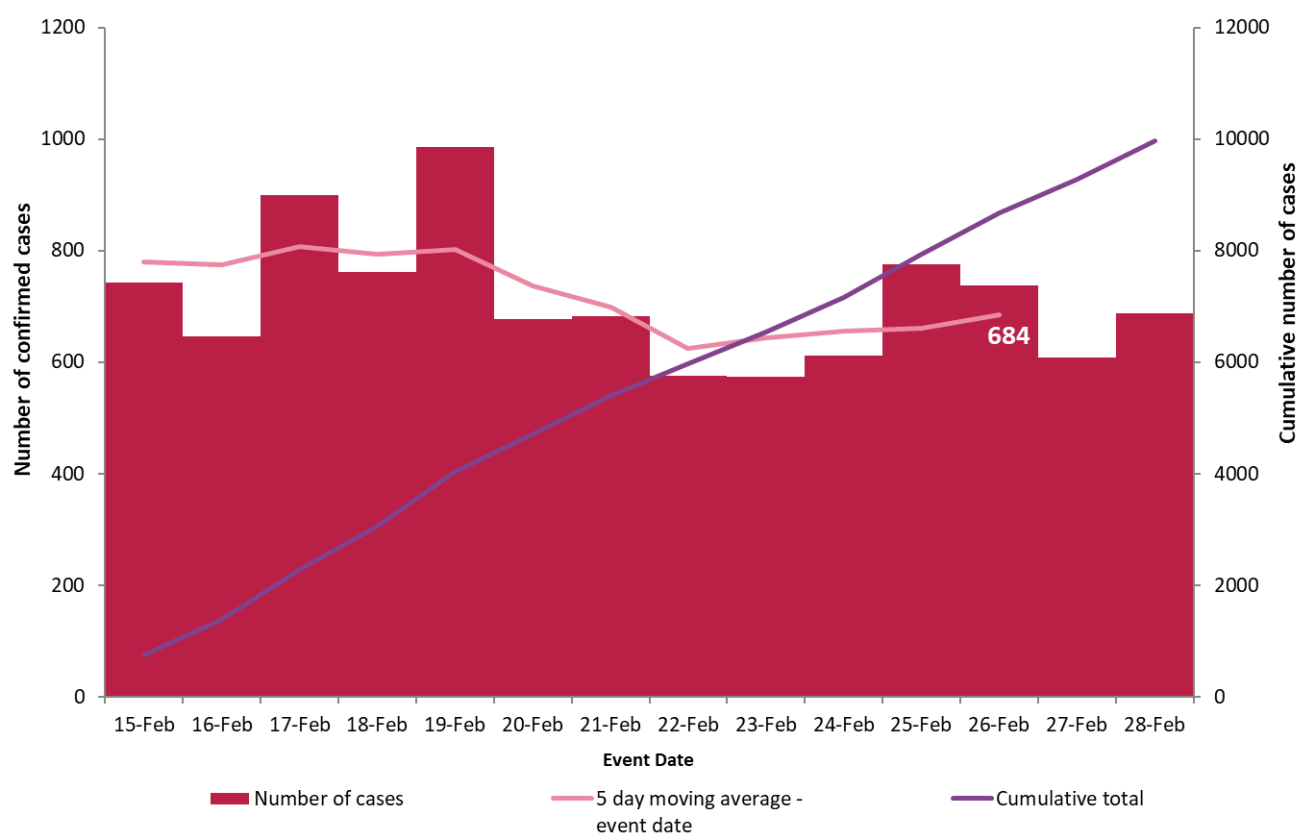


Figure 1. Daily number and cumulative number of confirmed cases of COVID-19, and 5-day moving average, by notification date (n=9,964)

Table 1: Characteristics of confirmed COVID-19 cases notified in Ireland from 15/02/2021 up to midnight on 28/02/2021

Characteristic		Number of cases	Percent
Total number of confirmed cases		9,964	100
Sex	Male:Female ratio	1	
	Male	4,966	49.84
	Female	4,982	50
	Unknown	16	0.16
Age	Median age (years)	33	
	Mean age (years)	35	
	Age range (years)	0 - 100	
	0-4 yrs	592	5.94
	5-12 yrs	818	8.21
	13-18 yrs	705	7.08
	19-24 yrs	1,554	15.6
	25-34 yrs	1,605	16.11
	35-44 yrs	1,543	15.49
	45-54 yrs	1,261	12.66
	55-64 yrs	865	8.68
	65-74 yrs	433	4.35
	75-84 yrs	353	3.54
	85+ yrs	234	2.35
	Unknown	1	0.01
Symptom status at time of test*	Yes	5,901	59.22
	No	1,883	18.9
	Unknown	2,180	21.88

*Symptom status is recorded at the time of test and is not updated, therefore a proportion of the asymptomatic cases may subsequently develop symptoms however this will not be captured in the data.

Table 2: Number of confirmed COVID-19 cases by community healthcare organisation (CHO) notified in Ireland from 15/02/2021 to midnight 28/02/2021

CHO Area	Number of confirmed cases	Incidence per 100,000 population
CHO1	666	170.2
CHO2	1,043	230.2
CHO3	846	219.7
CHO4	446	64.6
CHO5	767	150.3
CHO6	769	200.7
CHO7	1,457	205.9
CHO8	1,732	279.7
CHO9	2,238	360.2
Total	9,964	209.2

Table 3: Number of confirmed COVID-19 cases by county notified in Ireland from 15/02/2021 to midnight 28/02/2021

County	Number of confirmed cases	Incidence per 100,000 population	5 day moving average of confirmed cases (24/02/2021-28/02/2021)
Offaly	341	437.4	28
Longford	154	376.8	13
Dublin	3,797	281.8	268
Limerick	543	278.6	41
Louth	348	270.0	27
Laois	224	264.5	13
Galway	666	258.1	39
Westmeath	226	254.6	19
Kildare	528	237.3	29
Monaghan	144	234.6	7
Mayo	303	232.2	17
Meath	438	224.6	34
Waterford	242	208.3	8
Carlow	116	203.8	10
Tipperary	318	199.3	20
Donegal	304	191.0	27
Cavan	119	156.2	6
Clare	174	146.4	10
Leitrim	45	140.4	3
Roscommon	74	114.7	7
Wicklow	139	97.6	8
Wexford	136	90.8	8
Kilkenny	85	85.7	4
Sligo	54	82.4	4
Cork	365	67.2	26
Kerry	81	54.8	9
Total	9,964	209.2	684

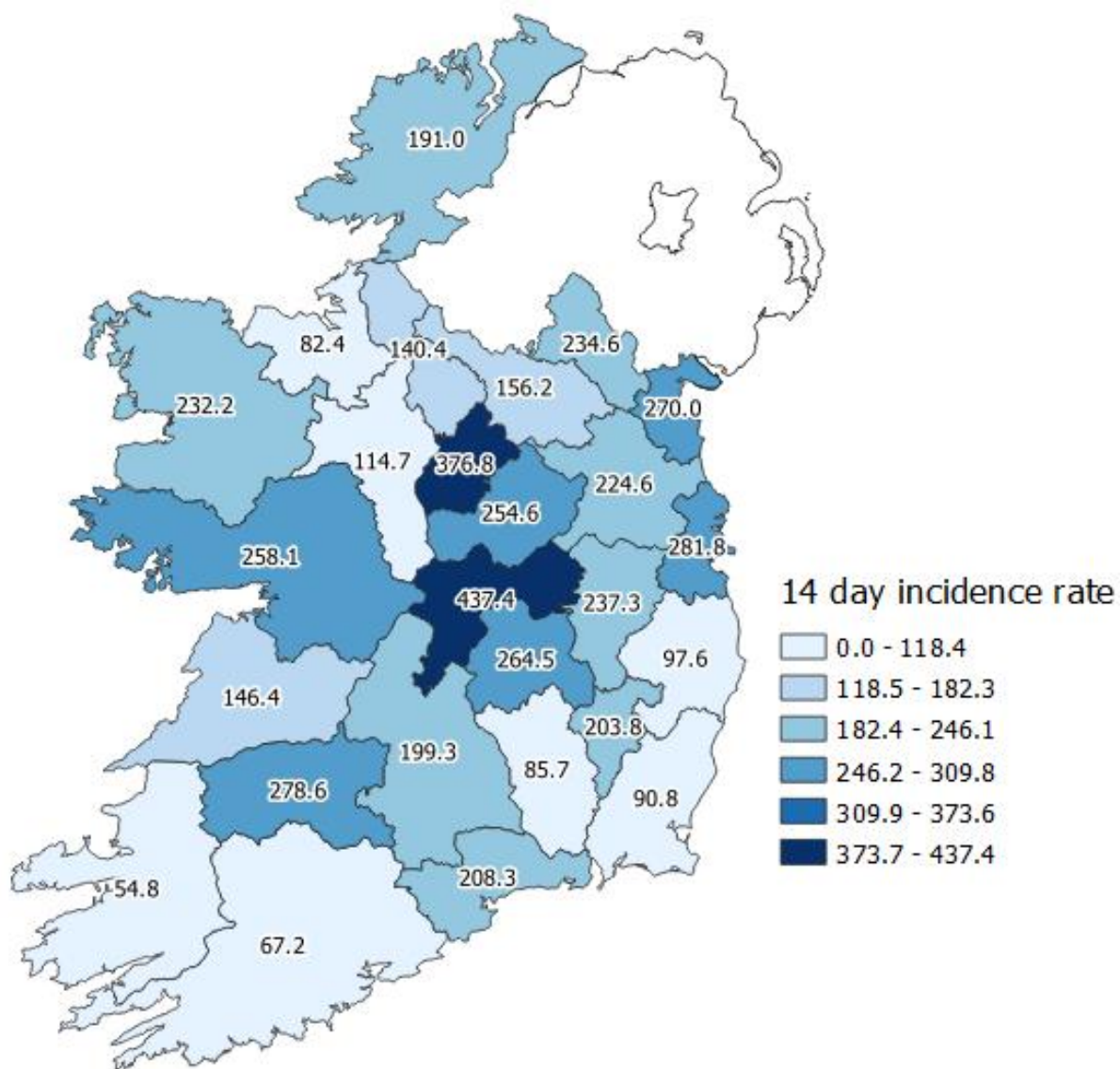


Figure 2: Cumulative 14-day incidence rates of confirmed COVID-19 cases per 100,000 population by county notified in Ireland between 15/02/2021 and 28/02/2021

Please do not directly compare county shades to previous maps. The categories listed will change as the number of cases change, which may result in changes to the map shading.

Table 4: Number and incidence of confirmed COVID-19 cases by Dublin Local Health Offices* (LHOs) notified in Ireland with a notification date between 15/02/2021 and 28/02/2021

CCA	Local Health Office	Number of cases in past 14 days based on notification date	14 day incidence rates based on notification dates
CCA1	Dublin South	179	131.5
CCA2	Dublin South East	458	370.2
CCA3	Dublin South City	184	122.7
CCA4	Dublin South West	305	189.6
CCA5	Dublin West	433	278.7
CCA6	Dublin North West	693	333.7
CCA7	Dublin North Central	1,012	654.7
CCA8	Dublin North	533	205.7
Dublin		3,797	281.8

Note: Local health offices (LHOs) came into operation on 1st September 2005, replacing Community Care Areas (CCAs). LHO population denominators are used in this report rather than CCA population denominators. The LHO rates were calculated using Census 2016 LHO denominator data extracted from the HSE Health Atlas and are not a direct match to the corresponding CCAs.

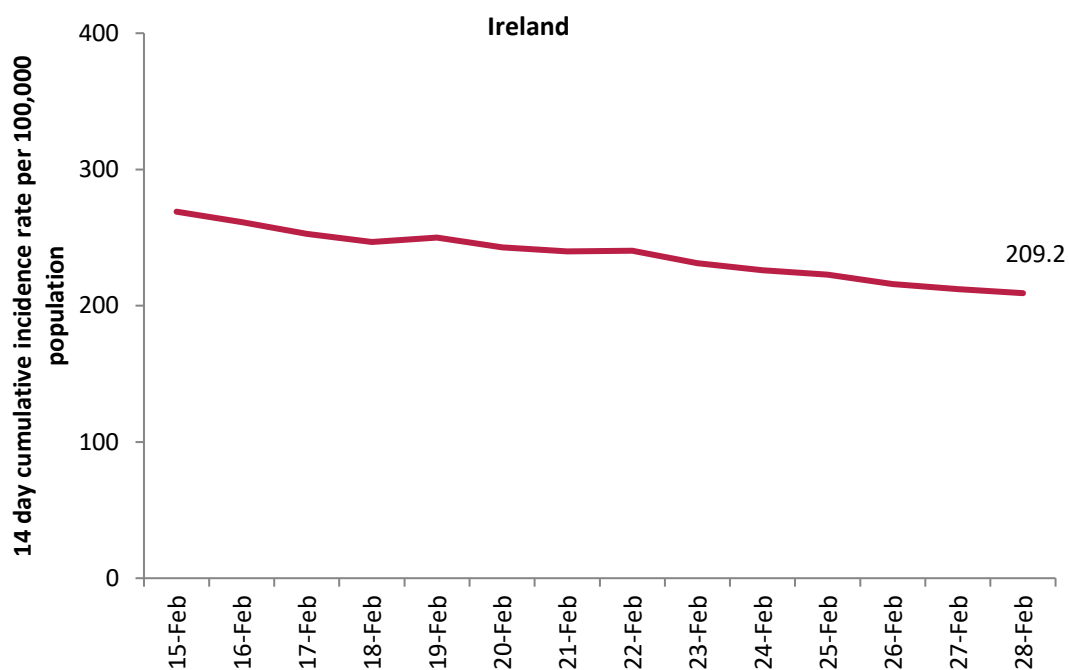


Figure 3: 14 day cumulative incidence rates per 100,000 population of confirmed cases of COVID-19 in Ireland* (15/02/2021 to 28/02/2021)

*14 day incidence rates per 100,000 populations of confirmed cases of COVID-19 for individual counties can be found in appendix 1 of this report

Table 5: Number of confirmed COVID-19 cases by most likely transmission source notified from 15/02/2021 to midnight 28/02/2021

Most likely transmission source	Number of cases	Percent
Travel related*	79	0.79%
Close contact with a known confirmed case	4,990	50.08%
Healthcare setting acquired: patient	354	3.55%
Healthcare setting acquired: staff	200	2.01%
Community transmission	1,895	19.02%
Under investigation	2,446	24.55%
Total	9,964	100.00%

*Travel related cases include cases who acquire COVID-19 infection outside of Ireland (imported cases) and cases who acquire COVID-19 infection directly from imported cases

Table 6: Cumulative number of confirmed cases of COVID-19 notified in Ireland from 15/02/2021 to midnight 28/02/2021 by age group, hospitalisation and ICU admission*

Age Group (years)	Number of cases (n)	Cases hospitalised (n)	Cases hospitalised (%)	Cases admitted to ICU (n)	Cases admitted to ICU (%)
0-4 yrs	592	18	2.67	0	0
5-12 yrs	818	18	2.67	0	0
13-18 yrs	705	21	3.12	0	0
19-24 yrs	1554	61	9.06	0	0
25-34 yrs	1605	62	9.21	<5	
35-44 yrs	1543	64	9.51	<5	
45-54 yrs	1261	86	12.78	8	30.77
55-64 yrs	865	74	11.00	6	23.08
65-74 yrs	433	96	14.26	8	30.77
75-84 yrs	353	108	16.05	<5	
85+ yrs	234	64	9.51	0	0
Unknown	1	1	0.15	0	0
Total	9,964	673	100.00	26	100

* The number of cases hospitalised and admitted to ICU relate only to events notified in the last 14 days and do not include cases notified prior to this and admitted to hospital or ICU in the last 14 days

Deaths among COVID-19 cases

Table 7: Summary of deaths in all COVID-19 cases notified in Ireland from 15/02/2021 up to midnight 28/02/2021

	Number	Percent
Total number of deaths	38	
Confirmed	36	94.74
Probable	1	2.63
Possible	1	2.63
Total number of cases hospitalised	25	65.79
Total number of male cases	24	63.16
M:F ratio	1.71	
Median age (years)	81.5	
Mean age (years)	80	
Age range (years)	52 - 92	

Table 8: Number of deaths in all COVID-19 cases by sex and age group notified in Ireland from 15/02/2021 up to midnight 28/02/2021

Age group (years)	Female	Male	Total	Percent
<65 yrs	*	*	*	7.89
65-74 yrs	*	*	6	15.79
75-84 yrs	5	9	14	36.84
85+ yrs	7	8	15	39.47
Total	14	24	38	100
Percent	36.84	63.16		

*One or both values <5

Acknowledgements

Sincere thanks are extended to all those who are participating in the collection of data and reporting of data used in these reports. This includes the HSE COVID-19 Contact Management Programme (CMP), staff in ICU units, notifying clinicians, laboratory staff, public health doctors, nurses, surveillance scientists, microbiologists and administrative staff.

Report prepared by COVID-19 Epidemiology Team, HPSC

Technical Notes

1. Data Source

Data are based on statutory notifications and were extracted from Computerised Infectious Disease Reporting (CIDR) system. Data are provisional and subject to ongoing review, validation and update. As a result, figures in this report may differ from previously published figures.

2. Population data

Population data were taken from Census 2016. Data were aggregated into the following age groups for the analysis: 0-4 years, 5-12 years, 13-18 years, 19-24 years, 25-34 years, 35-44 years, 45-54 years, 55-64 years, 65-74 years, 75-84 years and ≥ 85 years.

3. Transmission classification

Transmission classification is based on country of infection as well as enhanced exposure data (international travel; close contact of a case) recorded in CIDR. Transmission is classified as 'unknown' due to incomplete data on CIDR.

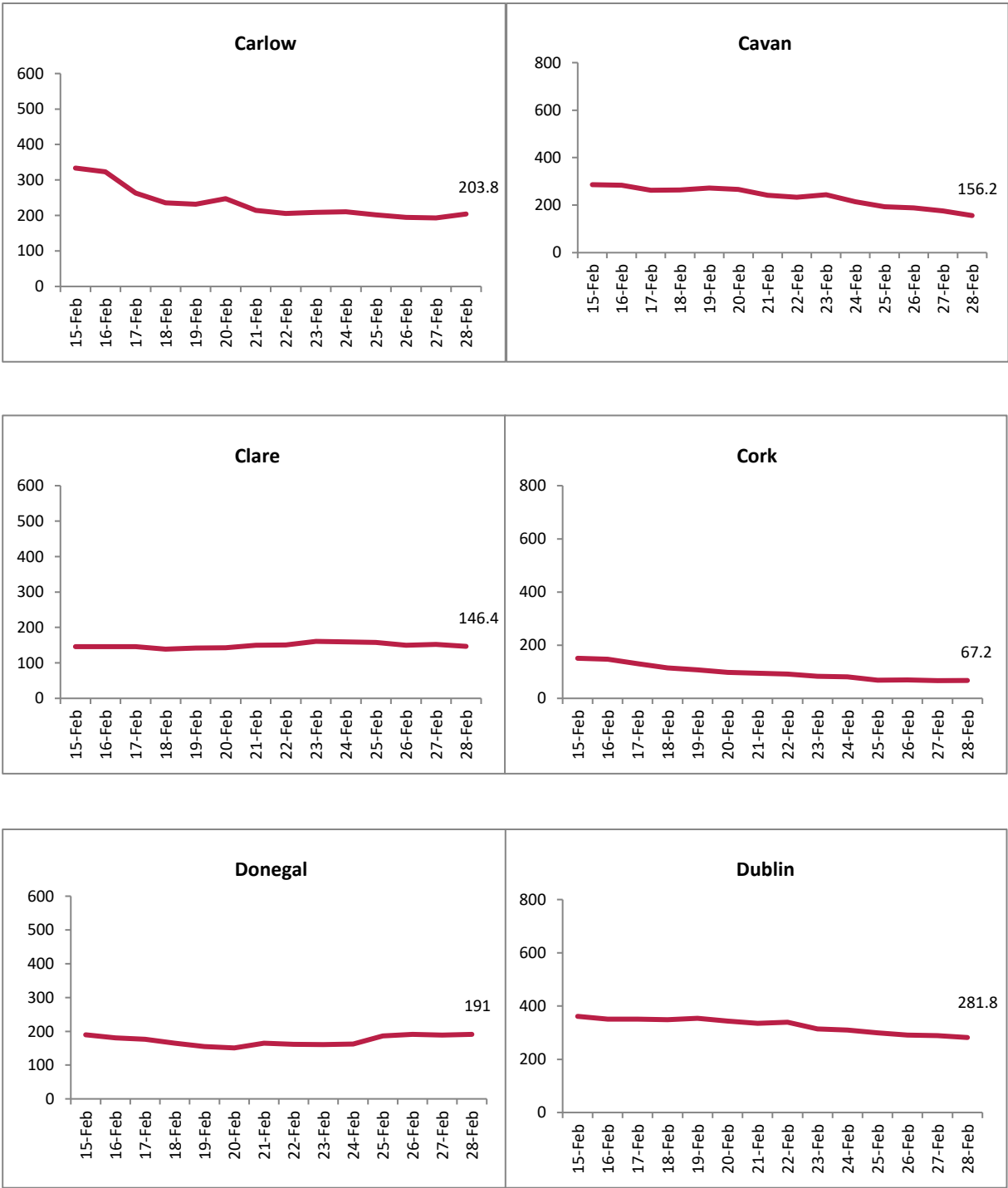
Travel related cases include cases who acquire COVID-19 infection outside of Ireland (imported cases) and cases who acquire COVID-19 infection directly from imported cases.

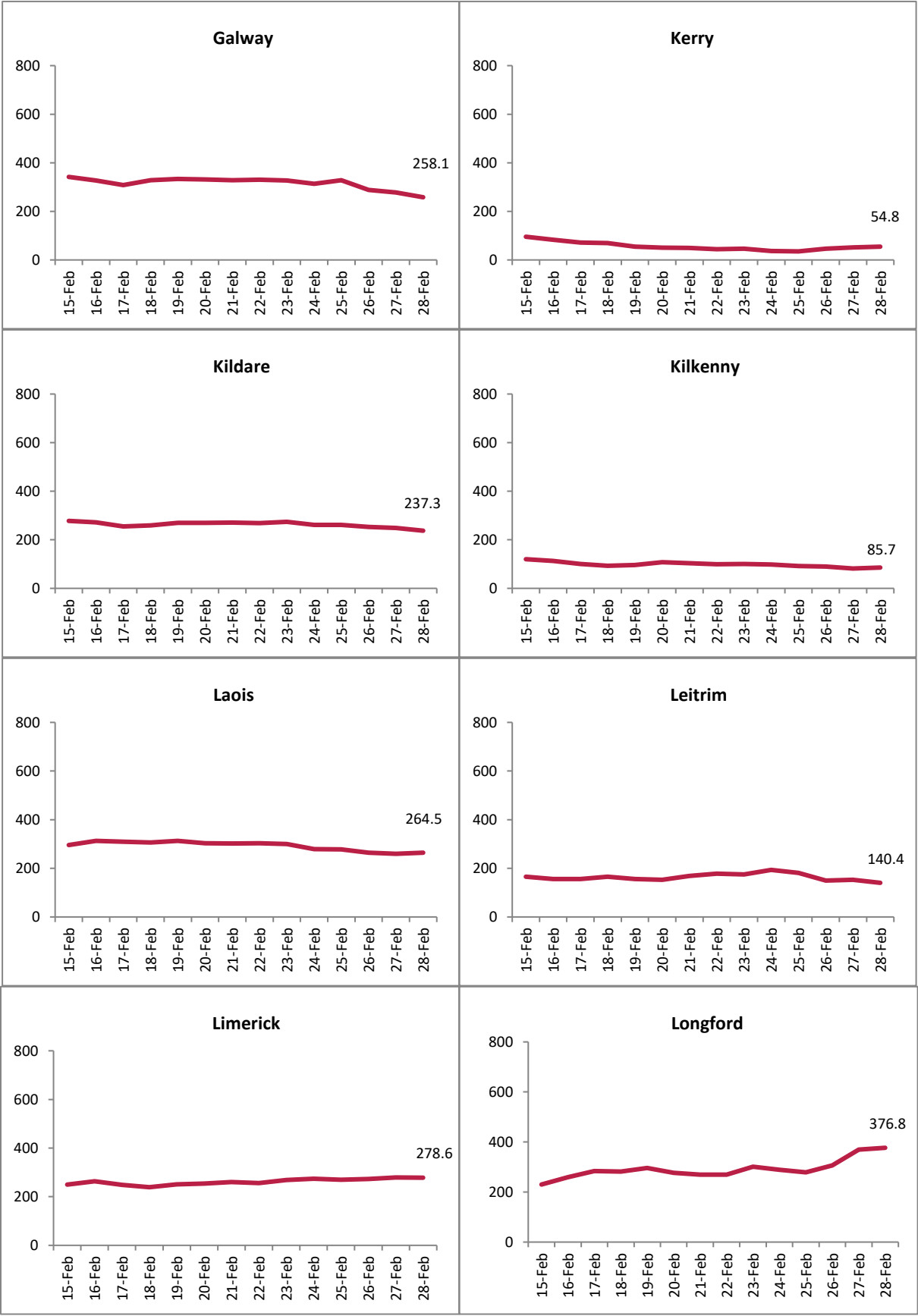
WHO definition of transmission classification is specified below:

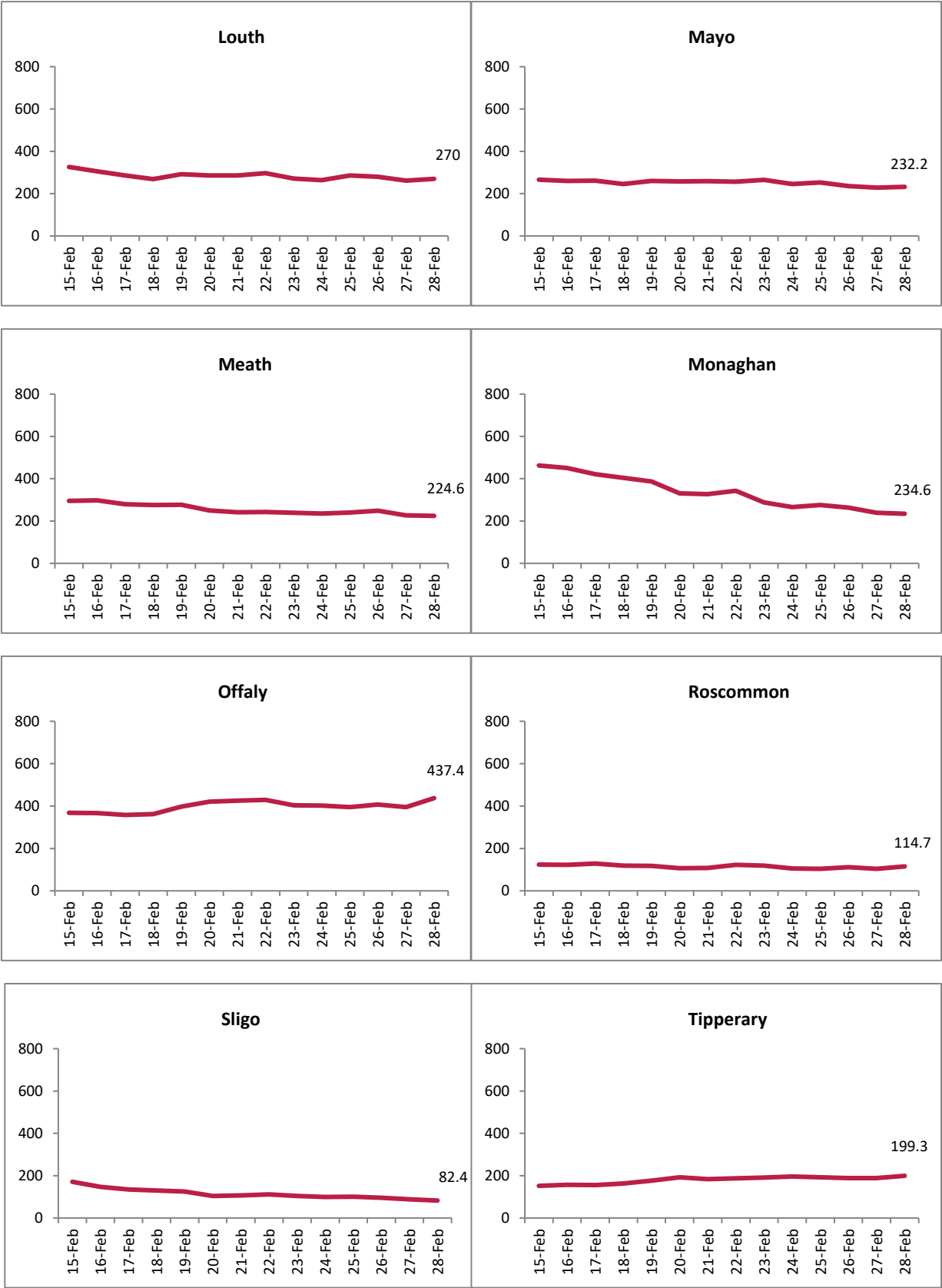
- Community transmission is evidenced by the inability to relate confirmed cases through chains of transmission for a large number of cases, or by increasing positive tests through routine screening of sentinel samples.
- Local transmission indicates locations where the source of infection is within the reporting location.
- Imported cases only indicates locations where all cases have been acquired outside the location of reporting.

Appendix 1

Figure A. 14 day cumulative incidence rates per 100,000 population of confirmed cases of COVID-19 by county (15/02/2021 to 28/02/2021)







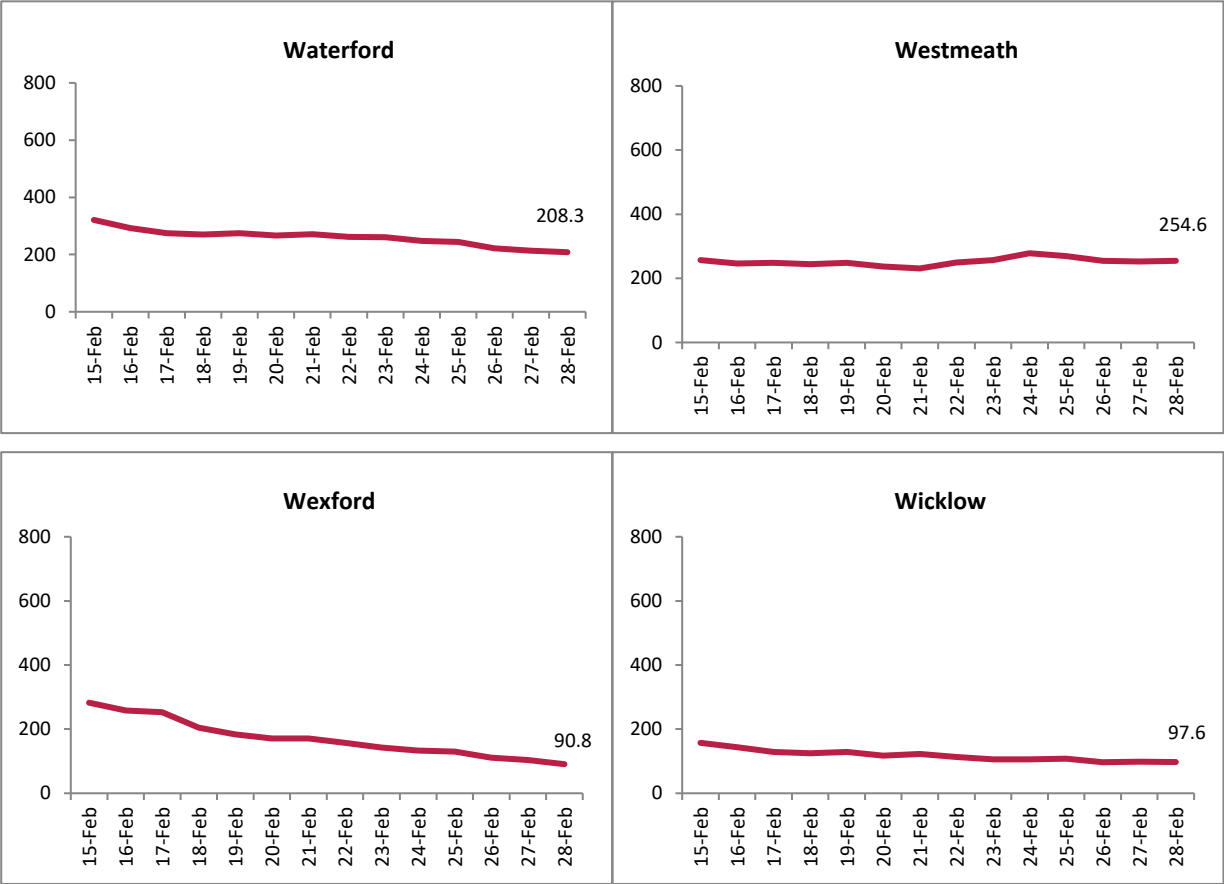


Figure B. 14 day cumulative incidence rates per 100,000 population of confirmed cases of COVID-19 by Dublin CCA (15/02/2021 to 28/02/2021)

