

IMMUNISATION UPTAKE STATISTICS FOR IRELAND



A REPORT BY THE NATIONAL DISEASE SURVEILLANCE CENTRE

Quarter 1-2002

August, 2002

Summary

Uptake rates for vaccines at 12 months have increased by 2-3% when compared with the previous quarter. In Quarter 1-2002 uptake for D₃, T₃ and Hib₃ was 72%, 71% for P₃ and Polio₃ and 70% for MenC₃.

At 24 months uptake rates for D₃, T₃, Hib and Polio₃ remained unchanged in Quarter 1-2002 compared with the previous quarter, while P₃ and MMR₁ uptake increased by 1% to 80% and 70%, respectively.

Introduction

The immunisation uptake statistics for children 12 and 24 months of age in Quarter 1-2002 and who have received three doses of vaccines against diphtheria (D₃), pertussis (P₃), tetanus (T₃), *Haemophilus influenzae* type b (Hib₃), polio (Polio₃), Meningococcal group C (MenC₃, uptake at 12 months only) and one dose of vaccine against measles, mumps and rubella (MMR₁, uptake at 24 months only) are presented in this report. These statistics relate to uptake in the cohorts born between 01/01/2001 & 31/03/2001 and 01/01/2000 & 31/03/2000.

Results

Immunisation uptake at 12 months in Quarter 1-2002

Immunisation uptake rates in children 12 months of age in Quarter 1-2002 are presented (Table 1). National uptake of D₃, T₃ and Hib₃ at 12 months was 72% and 71% for P₃ and Polio₃. Hib₃ uptake is based on data from seven of the eight health boards, as WHB was not in a position to provide uptake data on this vaccine for this quarter. The highest uptake rates at 12 months were reported by the NEHB at 82-84%, while the lowest rates were in the ERHA at 61-63% (Table 1).

National uptake at 12 months continued to improve in Quarter 1-2002 rising by 2-3% compared with the previous quarter (Figure 1). Apart from MHB and WHB, uptake at 12 months increased in all health boards in this quarter when compared with the previous quarter; ERHA (3-4%), MWHB (7-8%), NEHB (4-6%), NWHB (1-3%), SEHB (1%) and SHB (1-2%), see Appendix 1. However, rates declined in MHB (8-9%) and WHB (2-3%), see Appendix 1.

This is the first quarter that MenC₃ uptake data at 12 months has been collated nationally and was 68%. This ranged from 58% in MHB to 79% in SEHB (Table 1).

Vaccination coverage statistics for children 12 months of age in Quarter 1-2002 was 95% in Northern Ireland¹ and 91% for the United Kingdom as a whole.²

Table 1. Immunisation uptake rates in children 12 months of age in Quarter 1-2002

Health Board	No. in cohort	% Uptake at 12 months					
		Cohort born 01/01/2001 – 31/03/2001					
		D ₃	P ₃	T ₃	Hib ₃	Polio ₃	MenC ₃
ERHA	5,281	63	63	63	63	61	60
MHB	895	64	62	64	64	63	58
MWHB	1,197	78	76	78	77	77	76
NEHB	1,433	84	82	84	83	84	78
NWHB	740	81	81	81	81	81	73
SEHB	1,597	81	80	81	81	81	79
SHB	1,921	77	76	77	77	77	74
WHB	1,259	68	67	68	NA*	68	66
Ireland	14,323	72	71	72	72	71	68

*Hib uptake data not available on this occasion

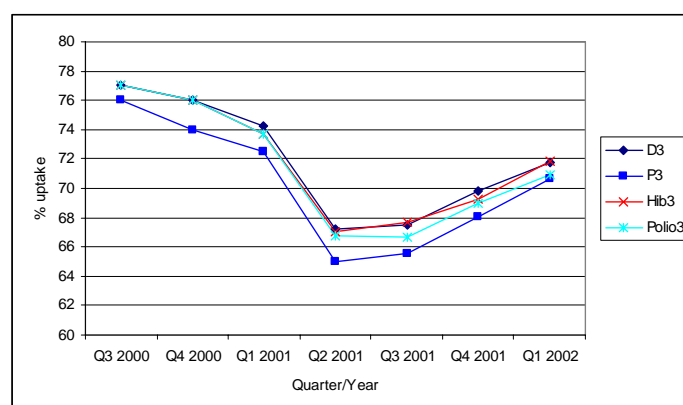


Figure 1. Quarterly immunisation uptake rates at 12 months in Ireland (Note scale ranges from 60-80%)

Immunisation uptake at 24 months in Quarter 1- 2002

Immunisation uptake rates in children 24 months of age in Quarter 1-2002 are presented (Table 2). National uptake rates were 83% for D₃, T₃ and Polio₃, 82% for Hib₃ and 81% for P₃. Uptake for these vaccines ranged from 75-78% in ERHA and MHB up to 90-91% in NEHB (Table 2). MMR₁ uptake was 70%, ranging from 60% in ERHA to 82% in SEHB (Table 2). The target 95% rate at 24 months was not reached at either national or health board level for any of the vaccines.

Table 2. Immunisation uptake rates in children 24 months of age in Quarter 1- 2002

Health Board	No. in cohort	% Uptake at 24 months					
		D ₃	P ₃	T ₃	Hib ₃	Polio ₃	MMR ₁
ERHA	5,304	78	76	78	77	77	60
MHB	861	78	75	78	78	78	64
MWHB	1,285	86	83	86	85	86	76
NEHB	1,251	91	90	91	90	90	78
NWHB	723	89	89	89	88	89	81
SEHB	1,562	89	86	89	88	88	82
SHB	1,961	85	82	85	84	84	75
WHB	1,209	84	81	84	83	83	68
Ireland	14,156	83	81	83	82	83	70

In Q1-2002, D₃, T₃, Hib₃ and Polio₃ uptake rates at 24 months were unchanged from the previous quarter, while P₃ and MMR₁ uptake both increased by 1% (Figure 2 and Table 3). Although a very slight recovery in MMR₁ uptake was observed in this quarter, it is still 13% below the rates reported in Q4-2000 and 25% below the national target rate.

Data on MenC uptake in children 24 months of age in Q1-2002 are not presented in this report as difficulties were experienced in extracting data on those that had actually completed the MenC schedule. This was related to the fact that depending on the age children from this birth cohort presented for vaccination, the number of doses required to complete the MenC schedule varied between one and three doses.

In Quarter 1-2002 vaccination coverage statistics at 24 months for D₃, P₃, T₃, Hib₃, Polio₃ and MenC₃ was 96-97% in Northern Ireland¹ and 92-94% for the United Kingdom as a whole.² MMR₁ uptake was 90% in Northern Ireland¹ and 84% in the UK.²

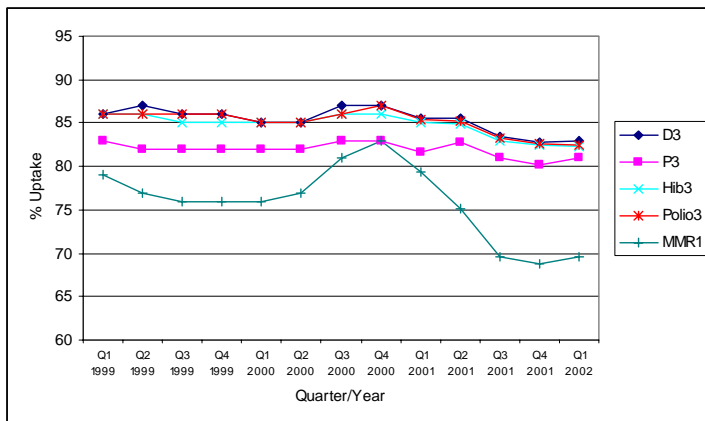


Figure 2. Quarterly immunisation uptake rates at 24 months in Ireland (Note scale ranges from 60-95%)

Table 3. Quarterly national immunisation uptake rates (%) at 24 months

	D ₃	P ₃	T ₃	Hib ₃	Polio ₃	MMR ₁
Q1 1999	86	83	86	86	86	79
Q2 1999	87	82	87	86	86	77
Q3 1999	86	82	86	85	86	76
Q4 1999	86	82	86	85	86	76
Q1 2000	85	82	85	85	85	76
Q2 2000	85	82	85	85	85	77
Q3 2000	87	83	87	86	86	81
Q4 2000	87	83	87	86	87	83
Q1 2001	86	82	86	85	85	79
Q2 2001	86	83	86	85	85	75
Q3 2001	83	81	83	83	83	70
Q4 2001	83	80	83	82	83	69
Q1 2002	83	81	83	82	83	70

Note: Prior to Q1-2002, NWHB provided DTaP/DT uptake as combined value, since not possible to accurately determine P₃ uptake for this health board, it was excluded from overall P₃ analysis

MMR₁ uptake by Health Board

Overall in Q1-2002, MMR₁ uptake at 24 months increased by 1% to 70%. When compared with the previous quarter MMR₁ uptake rates increased in MWHB (6%), NWHB (6%) and SHB (1%), declined in MHB (6%) and NEHB (2%) and remained largely unchanged in ERHA, SEHB and WHB (Figure 3).

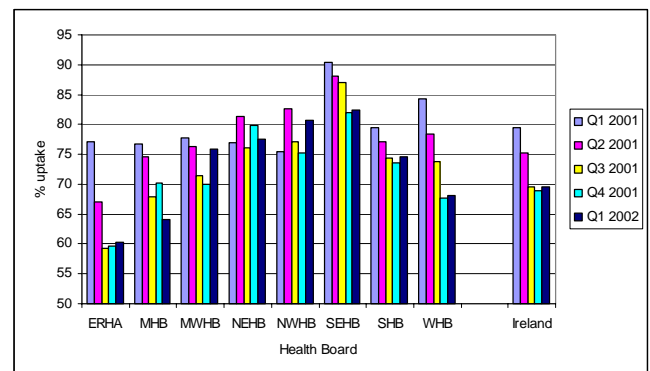


Figure 3. Quarterly MMR₁ uptake rates at 24 months by health board in 2001 (Note scale ranges from 50-95%)

Detailed quarterly immunisation uptake statistics at 12 and 24 months for each health board are presented in Appendix 1 & 2 of this report.

Detailed national MenC uptake statistics as a result of the campaign are currently being collated and will be presented in a separate report shortly

References

1. Vaccination coverage statistics for children in Northern Ireland. *Communicable Diseases Monthly Report* 2002; **11(6)**. Available at <http://www.cdscni.org.uk>
2. COVER programme: January to March 2002. CDR Weekly 2002; 12(26). Available at: <http://www.phls.org.uk>

NDSC would like to thank the health board for providing data and special thanks to the Specialists in Public Health Medicine, Immunisation Co-ordinators and Systems Analysts for their assistance.

Appendix 1. Quarterly Immunisation Uptake Rates at 12 months by Health Board

Uptake at 12 months ~ ERHA					
	D ₃	P ₃	T ₃	Hib ₃	Polio ₃
Q3 2000	75	73	75	75	75
Q4 2000	73	72	73	73	73
Q1 2001	69	67	69	69	69
Q2 2001	53	52	53	53	53
Q3 2001	61	60	61	60	59
Q4 2001	60	59	60	60	59
Q1 2002	63	63	63	63	61

Uptake at 12 months ~ MHB					
	D ₃	P ₃	T ₃	Hib ₃	Polio ₃
Q3 2000	70	67	70	71	71
Q4 2000	72	69	72	72	72
Q1 2001	71	68	71	71	71
Q2 2001	66	65	66	66	66
Q3 2001	61	59	61	62	60
Q4 2001	72	71	72	72	71
Q1 2002	64	62	64	64	63

Uptake at 12 months ~ MWHB					
	D ₃	P ₃	T ₃	Hib ₃	Polio ₃
Q3 2000	74	72	74	74	74
Q4 2000	72	71	72	72	72
Q1 2001	77	74	77	74	74
Q2 2001	69	67	69	69	69
Q3 2001	64	62	64	64	63
Q4 2001	70	68	70	70	70
Q1 2002	78	76	78	77	77

Uptake at 12 months ~ NEHB					
	D ₃	P ₃	T ₃	Hib ₃	Polio ₃
Q3 2000	*	*	*	*	*
Q4 2000	*	*	*	*	*
Q1 2001	*	*	*	*	*
Q2 2001	79	78	79	78	78
Q3 2001	74	73	74	76	75
Q4 2001	79	78	79	79	78
Q1 2002	84	82	84	83	84

* Unable to provide data for this quarter

Uptake at 12 months ~ NWHB					
	D ₃	P ₃	T ₃	Hib ₃	Polio ₃
Q3 2000	69	**	69	69	69
Q4 2000	74	**	74	74	74
Q1 2001	71	**	71	71	71
Q2 2001	83	**	83	83	82
Q3 2001	82	**	82	82	80
Q4 2001	80	**	80	79	78
Q1 2002	81	81	81	81	81

Uptake at 12 months ~ SEHB					
	D ₃	P ₃	T ₃	Hib ₃	Polio ₃
Q3 2000	90	87	90	90	90
Q4 2000	86	83	86	86	86
Q1 2001	87	84	87	87	86
Q2 2001	84	82	84	84	84
Q3 2001	83	81	83	83	82
Q4 2001	80	79	80	80	80
Q1 2002	81	80	81	81	81

Uptake at 12 months ~ SHB					
	D ₃	P ₃	T ₃	Hib ₃	Polio ₃
Q3 2000	*	*	*	*	*
Q4 2000	78	76	78	78	78
Q1 2001	76	74	76	76	75
Q2 2001	73	70	73	72	72
Q3 2001	68	66	68	69	67
Q4 2001	76	74	76	75	75
Q1 2002	77	76	77	77	77

Uptake at 12 months ~ WHB					
	D ₃	P ₃	T ₃	Hib ₃	Polio ₃
Q3 2000	85	83	85	85	85
Q4 2000	79	77	79	79	79
Q1 2001	80	78	80	80	80
Q2 2001	77	74	77	77	76
Q3 2001	73	71	73	71	72
Q4 2001	71	70	71	66	70
Q1 2002	68	67	68	*	68

* Unable to provide data for this quarter

** Uptake cannot be accurately calculated as DTaP/DT provided as combined value

Appendix 2 Quarterly Immunisation Uptake Rates at 24 months by Health Board

Uptake at 24 months ~ ERHA						
	D ₃	P ₃	T ₃	Hib ₃	Polio ₃	MMR ₁
Q1 1999	86	82	86	85	85	78
Q2 1999	85	81	85	84	85	77
Q3 1999	85	81	85	84	85	76
Q4 1999	84	80	84	84	84	76
Q1 2000	84	81	84	84	84	75
Q2 2000	84	81	84	84	84	74
Q3 2000	85	82	85	84	85	81
Q4 2000	85	82	85	84	84	81
Q1 2001	82	80	82	81	82	77
Q2 2001	82	80	82	82	82	67
Q3 2001	79	77	79	78	79	59
Q4 2001	78	76	78	78	78	60
Q1 2002	78	76	78	77	77	60

Uptake at 24 months ~ MHB						
	D ₃	P ₃	T ₃	Hib ₃	Polio ₃	MMR ₁
Q1 1999	83	77	83	82	82	72
Q2 1999	85	80	85	83	84	72
Q3 1999	81	77	81	80	81	68
Q4 1999	81	77	81	80	81	69
Q1 2000	83	78	83	83	84	73
Q2 2000	80	76	80	80	80	73
Q3 2000	81	77	81	80	80	75
Q4 2000	83	79	83	83	83	80
Q1 2001	82	77	82	81	81	77
Q2 2001	83	80	83	83	83	75
Q3 2001	81	79	81	81	81	68
Q4 2001	81	77	81	81	81	70
Q1 2002	78	75	78	78	78	64

Uptake at 24 months ~ MWHB						
	D ₃	P ₃	T ₃	Hib ₃	Polio ₃	MMR ₁
Q1 1999	82	79	82	81	82	74
Q2 1999	81	79	81	80	81	72
Q3 1999	79	77	79	79	79	73
Q4 1999	80	78	80	80	80	72
Q1 2000	76	73	76	76	76	70
Q2 2000	80	77	80	80	80	75
Q3 2000	83	80	83	82	83	78
Q4 2000	83	80	83	83	82	83
Q1 2001	82	80	82	81	82	78
Q2 2001	86	84	86	84	84	76
Q3 2001	82	80	82	81	82	71
Q4 2001	83	80	83	82	82	70
Q1 2002	86	83	86	85	86	76

Uptake at 24 months ~ NEHB						
	D ₃	P ₃	T ₃	Hib ₃	Polio ₃	MMR ₁
Q1 1999	84	**	84	84	84	80
Q2 1999	94	**	94	94	94	78
Q3 1999	95	**	95	95	95	78
Q4 1999	94	**	94	94	94	78
Q1 2000	91	**	91	91	91	81
Q2 2000	89	**	89	89	89	78
Q3 2000	95	**	95	95	95	79
Q4 2000	97	**	97	97	97	82
Q1 2001	94	**	94	94	94	77
Q2 2001	91	90	91	91	90	81
Q3 2001	89	88	89	89	89	76
Q4 2001	93	93	93	93	94	80
Q1 2002	91	90	91	90	90	78

** Uptake cannot be accurately calculated as DTaP/DT provided as combined value

Uptake at 24 months ~ NWHB						
	D ₃	P ₃	T ₃	Hib ₃	Polio ₃	MMR ₁
Q1 1999	87	**	87	86	87	76
Q2 1999	87	**	87	87	87	75
Q3 1999	86	**	86	86	86	74
Q4 1999	88	**	88	88	88	73
Q1 2000	86	**	86	86	86	74
Q2 2000	82	**	82	82	82	72
Q3 2000	83	**	83	83	83	72
Q4 2000	85	**	85	84	84	77
Q1 2001	85	**	85	85	85	75
Q2 2001	91	**	91	91	91	83
Q3 2001	90	**	90	90	90	77
Q4 2001	88	**	88	87	88	75
Q1 2002	89	89	89	88	89	81

Uptake at 24 months ~ SEHB						
	D ₃	P ₃	T ₃	Hib ₃	Polio ₃	MMR ₁
Q1 1999	92	87	92	92	92	90
Q2 1999	90	84	90	89	89	86
Q3 1999	88	85	88	87	88	85
Q4 1999	87	83	87	87	86	85
Q1 2000	89	85	89	88	88	86
Q2 2000	89	85	89	89	89	89
Q3 2000	91	87	91	90	91	92
Q4 2000	90	85	90	90	90	92
Q1 2001	91	87	91	91	91	90
Q2 2001	89	85	89	88	89	88
Q3 2001	90	88	90	90	90	87
Q4 2001	87	84	87	87	87	82
Q1 2002	89	86	89	88	88	82

Uptake at 24 months ~ SHB						
	D ₃	P ₃	T ₃	Hib ₃	Polio ₃	MMR ₁
Q1 1999	87	83	87	87	87	75
Q2 1999	86	81	86	86	86	72
Q3 1999	84	81	84	83	84	70
Q4 1999	86	81	86	85	86	73
Q1 2000	84	80	84	83	84	72
Q2 2000	84	80	84	83	84	76
Q3 2000	86	82	86	85	85	77
Q4 2000	87	83	87	86	86	82
Q1 2001	86	83	86	86	86	80
Q2 2001	85	82	85	85	85	77
Q3 2001	84	82	84	84	84	74
Q4 2001	84	81	84	83	84	74
Q1 2002	85	82	85	84	84	75

Uptake at 24 months ~ WHB						
	D ₃	P ₃	T ₃	Hib ₃	Polio ₃	MMR ₁
Q1 1999	92	89	92	92	92	86
Q2 1999	90	87	90	89	90	83
Q3 1999	91	87	91	90	90	81
Q4 1999	95	90	95	90	90	80
Q1 2000	92	87	92	91	92	82
Q2 2000	91	87	91	90	91	82
Q3 2000	92	87	92	91	91	84
Q4 2000	91	87	91	90	91	85
Q1 2001	91	88	91	90	91	84
Q2 2001	87	85	87	87	87	78
Q3 2001	87	85	87	86	87	74
Q4 2001	83	81	83	82	82	68
Q1 2002	84	81	84	83	83	68

** Uptake cannot be accurately calculated as DTaP/DT provided as combined value